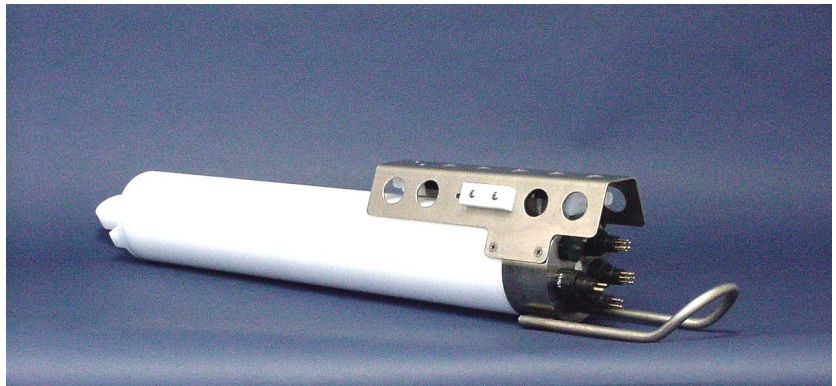


SBE 19*plus* SEACAT Profiler

*Conductivity, Temperature, and Pressure Recorder
with RS-232 Interface*



User's Manual

Sea-Bird Electronics, Inc.
1808 136th Place NE
Bellevue, Washington 98005 USA
Telephone: 425/643-9866
Fax: 425/643-9954
E-mail: seabird@seabird.com
Website: www.seabird.com

**Manual Version #012, 07/29/04
Firmware Version 1.4D and later**

Limited Liability Statement

Extreme care should be exercised when using or servicing this equipment. It should be used or serviced only by personnel with knowledge of and training in the use and maintenance of oceanographic electronic equipment.

SEA-BIRD ELECTRONICS, INC. disclaims all product liability risks arising from the use or servicing of this system. SEA-BIRD ELECTRONICS, INC. has no way of controlling the use of this equipment or of choosing the personnel to operate it, and therefore cannot take steps to comply with laws pertaining to product liability, including laws which impose a duty to warn the user of any dangers involved in operating this equipment. Therefore, acceptance of this system by the customer shall be conclusively deemed to include a covenant by the customer to defend, indemnify, and hold SEA-BIRD ELECTRONICS, INC. harmless from all product liability claims arising from the use or servicing of this system.

Table of Contents

Section 1: Introduction	5
About this Manual	5
How to Contact Sea-Bird	5
Quick Start	5
Unpacking SBE 19 <i>plus</i>	6
Section 2: Description of SBE 19<i>plus</i>	7
System Description	7
Specifications	11
Dimensions and End Cap Connectors	12
Batteries	13
Battery Endurance	13
External Power	15
Cable Length and External Power for SBE 19 <i>plus</i> without Deck Unit	15
Data Storage	17
Data I/O	17
Magnetic Reed Switch	17
Configuration Options and Plumbing	18
Section 3: Power and Communications Test	20
Software Installation	20
Test Setup	20
Test	21
Section 4: Deploying and Operating SBE 19<i>plus</i>	25
Sampling Modes	25
Profiling Mode	26
Moored Mode	27
Pump Operation	28
Profiling Mode	28
Moored Mode	29
Real-Time Setup	30
Baud Rate and Cable Length	30
Real-Time Data Acquisition	31
Timeout Description	32
Command Descriptions	32
Data Output Formats	47
OUTPUTFORMAT=0 (raw frequencies and voltages in Hex)	47
OUTPUTFORMAT=1 (engineering units in Hex)	48
OUTPUTFORMAT=2 (raw frequencies and voltages in decimal)	49
OUTPUTFORMAT=3 (engineering units in decimal)	50
OUTPUTFORMAT=4 (pressure and scan number in Hex)	51
Optimizing Data Quality for Profiling Applications	52
Installing Anti-Foul Fittings for Moored Applications	53
Setup for Deployment	55
Deployment	56
Acquiring Real-Time Data with SEASAVE	57
Verifying Contents of .con File	57
Acquiring Real-Time Data	58
Recovery	59
Physical Handling	59
Uploading Data	60
Processing Data Using SBE Data Processing	63
Verifying Contents of Configuration (.con) File	63
Editing Raw Data File	64

Section 5: Routine Maintenance and Calibration	65
Corrosion Precautions.....	65
Connector Mating and Maintenance.....	65
Plumbing Maintenance.....	65
Replacing / Recharging Batteries.....	66
Replacing Alkaline Batteries.....	66
Recharging Optional Nickel-Cadmium Batteries.....	67
Conductivity Cell Maintenance.....	68
Active Use (storing for one day or less).....	68
Storage (storing for longer than one day).....	68
Cleaning.....	69
Pressure Sensor Maintenance.....	70
Replacing Anti-Foulant Devices (SBE 16 <i>plus</i> , SBE 19 <i>plus</i>).....	71
Sensor Calibration.....	72
Conductivity Sensor.....	72
Temperature Sensor.....	72
Pressure Sensor.....	73
Section 6: Troubleshooting	74
Problem 1: Unable to Communicate.....	74
Problem 2: No Data Recorded.....	74
Problem 3: Nonsense or Unreasonable Data.....	75
Problem 4: Program Corrupted.....	75
Glossary	76
Appendix I: Functional Description and Circuitry	77
Sensors.....	77
Sensor Interface.....	77
Real-Time Clock.....	77
Battery Wiring.....	78
Appendix II: Electronics Disassembly/Reassembly	79
Appendix III: Command Summary	80
Appendix IV: AF24173 Anti-Foulant Device	83
Appendix V: Replacement Parts	87
Index	90

Section 1: Introduction

This section includes contact information, Quick Start procedure, and photos of a standard SBE 19*plus* shipment.

About this Manual

This manual is to be used with the SBE 19*plus* SEACAT Profiler Conductivity, Temperature, and Pressure Recorder.

It is organized to guide the user from installation through operation and data collection. We have included detailed specifications, command descriptions, maintenance and calibration information, and helpful notes throughout the manual.

Sea-Bird welcomes suggestions for new features and enhancements of our products and/or documentation. Please e-mail any comments or suggestions to seabird@seabird.com.

How to Contact Sea-Bird

Sea-Bird Electronics, Inc.
1808 136th Place Northeast
Bellevue, Washington 98005 USA
Telephone: 425-643-9866 Fax: 425-643-9954
E-mail: seabird@seabird.com Website: <http://www.seabird.com>

Business hours:
Monday-Friday, 0800 to 1700 Pacific Standard Time
(1600 to 0100 Universal Time)
Except from April to October, when we are on *summer time*
(1500 to 0000 Universal Time)

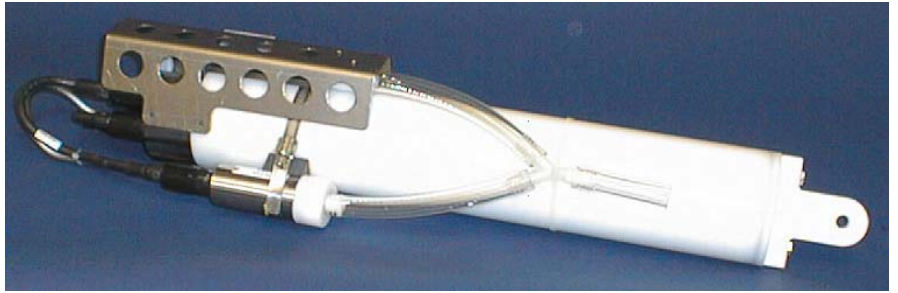
Quick Start

Follow these steps to get a Quick Start using the SBE 19*plus*.
The manual provides step-by-step details for performing each task:

1. Install batteries and test power and communications (see *Section 3: Power and Communications Test*).
2. Deploy the 19*plus* (see *Section 4: Deploying and Operating SBE 19plus*):
 - A. Install new batteries if necessary.
 - B. Ensure all data has been uploaded, and then send **INITLOGGING** to make entire memory available for recording if desired.
 - C. Set date and then time and establish setup and logging parameters.
 - D. **Moored mode** - Set 19*plus* to start logging now or in the future.
 - E. Install dummy plugs and/or cable connectors, and locking sleeves.
 - F. If applicable, remove Tygon tubing that was looped end-to-end around conductivity cell for storage. Reconnect tubing from pump to conductivity cell.
 - G. **Profiling mode** - Put magnetic switch in On position, send commands to start logging now or in the future, or apply external power, as appropriate for your instrument's setup.
 - H. Deploy 19*plus*.

Unpacking SBE 19plus

Shown below is a typical SBE 19plus shipment.



SBE 19plus SEACAT with SBE 5M pump



I/O Cable



25-pin to 9-pin adapter
(for use with computer
with DB-25 connector)



2-pin dummy plug
and locking sleeve



Spare o-ring and
hardware kit



Conductivity cell cleaning
solution (Triton-X)



Conductivity cell filling
and storage kit



Pressure sensor
oil refill kit



SBE 19plus Manual



Software, and Electronic Copies of
Software Manuals and User Manual

Section 2: Description of SBE 19*plus*

This section describes the functions and features of the SBE 19*plus* SEACAT Profiler, including:

- system description and auxiliary equipment
- specifications
- dimensions and end cap connectors
- batteries and battery endurance
- external power and cable length limitations
- data storage
- communication settings
- magnetic reed switch
- configuration options and plumbing

System Description

The SBE 19*plus* SEACAT Profiler is designed to measure conductivity, temperature, and pressure in marine or fresh-water environments at depths up to 7000 meters (22,900 feet). The 19*plus* operates in two modes:

- **Profiling mode** for acquiring vertical profiles of parameters. The 19*plus* runs continuously, and samples at four scans per second (4 Hz). The 19*plus* can be set to average up to 32,767 samples, storing and transmitting only the averaged data.
- **Moored mode** for acquiring time series measurements at sample rates of once every 10 seconds to once every 4 hours, adjustable in 1-second increments. Between samples, the 19*plus* powers down, drawing only 30 microamps of current.

Self-powered and self-contained, the SBE 19*plus* features the proven Sea-Bird conductivity and temperature sensors and a precision, semiconductor, strain-gauge pressure sensor. Nine D-size alkaline batteries provide 60 hours operation in profiling mode; the 8 Mbyte FLASH RAM records 50 hours of conductivity, temperature, and pressure data while sampling at four scans per second (other configurations/setup vary). The 19*plus* three-wire RS-232C interface provides simultaneous, real-time monitoring. User-selectable output format is raw data or engineering units, in hexadecimal or decimal form. Setup, diagnostics, and data extraction are performed without opening the housing. The 19*plus* can power and acquire the outputs of external sensors.

SBE 19*plus* logging is started by sliding the On/Off switch, by command via the RS-232 interface, or by applying external power, depending on your setup of the instrument.

A standard SBE 19*plus* is supplied with:

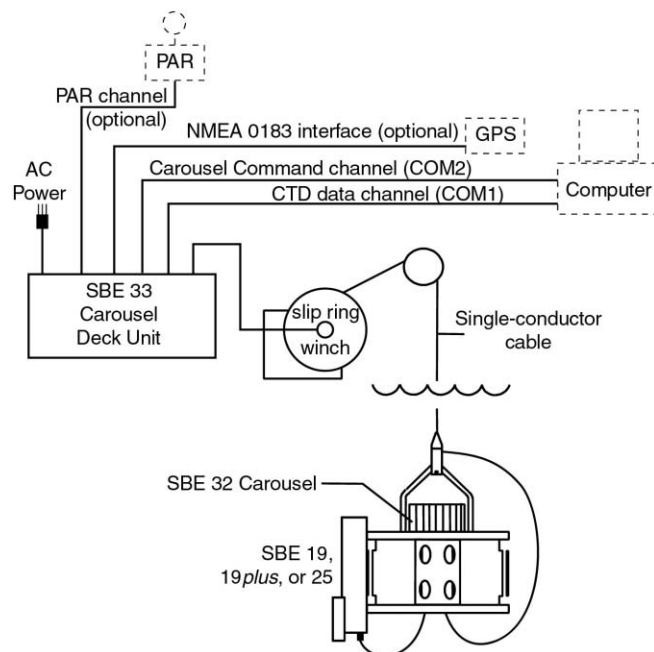
- Plastic housing for depths to 600 meters (1950 feet)
- Strain-gauge pressure sensor
- 8 Mbyte FLASH RAM memory
- 9 D-size alkaline batteries
- Impulse glass-reinforced epoxy bulkhead connectors: one 4-pin I/O connector; one 2-pin pump connector; and two 6-pin connectors (for two differential auxiliary A/D inputs each)
- T-C Duct, which ensures that Temperature and Conductivity measurements are made on the same parcel of water
- SBE 5M miniature pump for pumped conductivity; by fixing the flow to a constant rate, the pump ensures a constant conductivity time response. *The duct and pump combination results in dramatically lower salinity spiking.*

SBE 19*plus* options / accessories include:

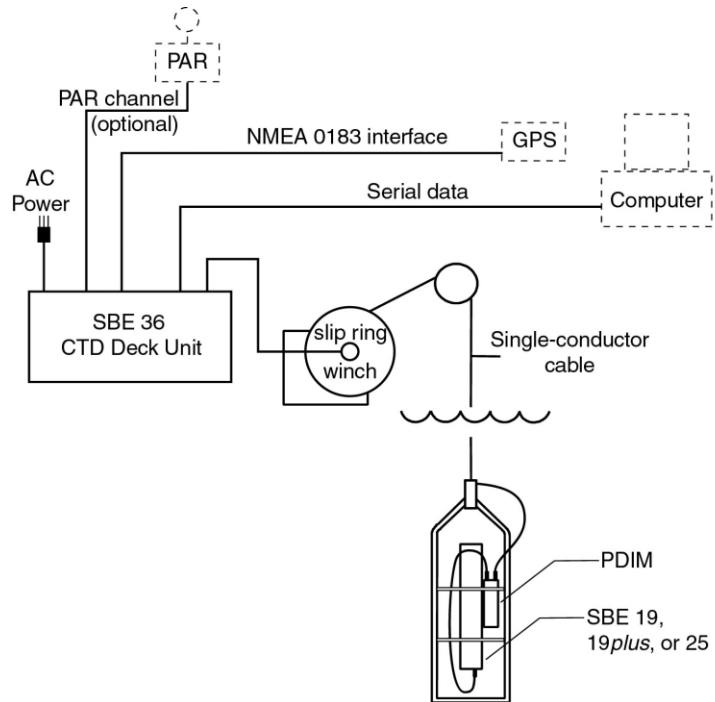
- Titanium housing for use to 7000 meters (22,900 feet)
- SBE 5T pump for use with dissolved oxygen and/or other pumped auxiliary sensors
- Sensors for dissolved oxygen, pH, fluorescence, light (PAR), light transmission, and turbidity
- Bulkhead connector for use with PAR sensor
- Stainless steel cage
- Wet-pluggable (MCBH) connectors in place of standard connectors
- Ni-Cad batteries and charger
- Moored mode conversion kit with anti-foulant device fittings, for when 19*plus* used on moorings

The SBE 19*plus* can be used with the following Sea-Bird equipment:

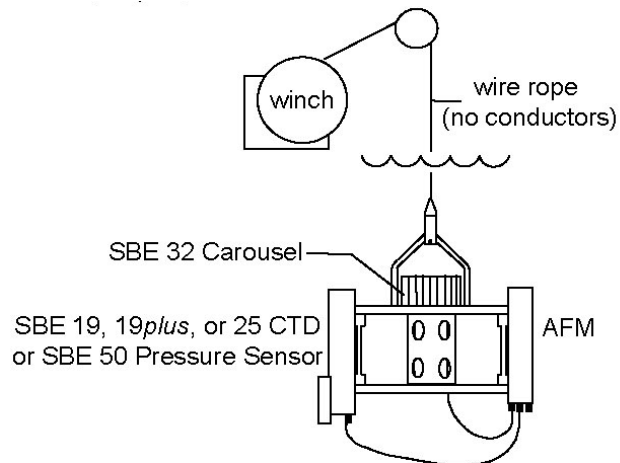
- **SBE 32 Carousel Water Sampler and SBE 33 Carousel Deck Unit** - The SBE 32 provides +15 VDC power to the 19*plus* and has ample power for auxiliary sensors not normally supported by battery-powered CTDs. The CTD data from the 19*plus* is converted into single-wire telemetry for transmission over long (10,000 meter [32,800 feet]) sea cables. Bottles may be closed at any depth without interrupting CTD data via software control using the SEASAVE program or from the front panel of the SBE 33 Deck Unit. See the SBE 33 manual for system operating details.



- SBE 36 CTD Deck Unit and Power Data Interface Module (PDIM)** - These items provide power and real-time data handling capability over single-conductor sea cables using the same method employed in the SBE 32/SBE 33. The PDIM is a small pressure housing that is mounted on or near the 19plus. It provides +15 VDC power to the 19plus and interfaces two-way RS-232 communications from the 19plus to the telemetry used on the sea cable. See the SBE 36/PDIM manual for system operating details.



- SBE 32 Carousel Water Sampler and Auto Fire Module (AFM)** - The AFM, mounted on or near the 19plus, allows the SBE 32 to operate autonomously on non-conducting cables. The AFM supplies the power, logic, and control commands to operate the SBE 32. The AFM monitors the pressure data recorded by the 19plus in real-time, closing water sampler bottles at predefined pressures (depths) or whenever the system is stationary for a specified period of time. Bottle number, firing confirmation, and five scans of CTD data are recorded in the AFM memory for each bottle fired. See the AFM manual for system operating details.



Notes:

- Help files provide detailed information on the use of SEATERM, SeatermAF, SEASAVE, and SBE Data Processing.
- Separate software manuals on CD-ROM contain detailed information on the setup and use of SEASAVE and SBE Data Processing.
- **Sea-Bird also supplies a DOS software package, SEASOFT-DOS. However, SEASOFT-DOS cannot process 19plus data because of data output format incompatibility.**

The SBE 19plus is supplied with a powerful Win 95/98/NT/2000/XP software package, SEASOFT-Win32, which includes:

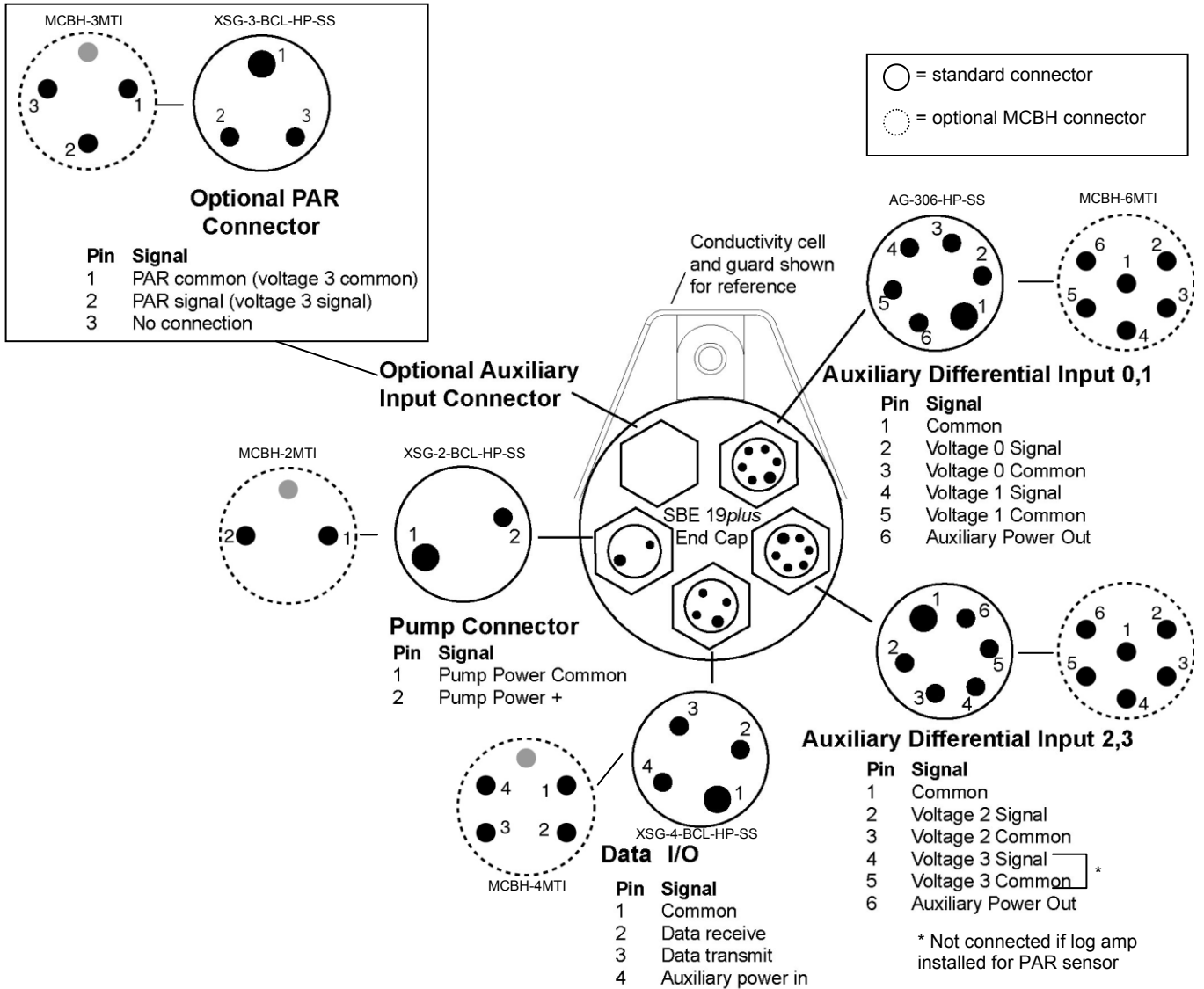
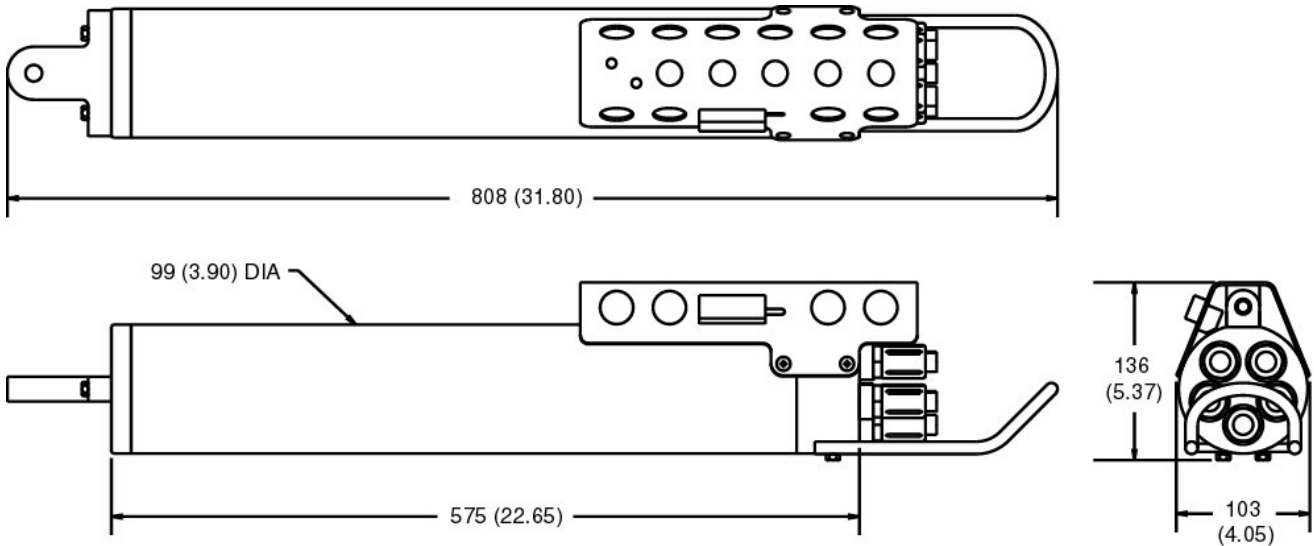
- **SEATERM** – terminal program for easy communication and data retrieval.
- **SeatermAF** – terminal program for easy communication and data retrieval *when the 19plus is used with the Auto Fire Module and SBE 32 Carousel Water Sampler.*
- **SEASAVE** – program for acquiring, converting, and displaying real-time or archived raw data.
- **SBE Data Processing** – program for calculation and plotting of conductivity, temperature, pressure, auxiliary sensor data, and derived variables such as salinity and sound velocity.

Specifications

	Temperature (°C)	Conductivity (S/m)	Strain Gauge Pressure
Measurement Range	-5 to +35	0 to 9	0 to full scale range: 20 / 100 / 350 / 1000 / 2000 / 3500 / 7000 meters
Initial Accuracy	0.005	0.0005	0.1% of full scale range
Typical Stability (per month)	0.0002	0.0003	0.004% of full scale range
Resolution	0.0001	<ul style="list-style-type: none"> 0.00005 (most oceanic water; resolves 0.4 ppm in salinity). 0.00007 (high salinity water; resolves 0.4 ppm in salinity). 0.00001 (fresh water; resolves 0.1 ppm in salinity). 	0.002% of full scale range
Sensor Calibration (measurement outside these ranges may be at slightly reduced accuracy due to extrapolation errors)	+1 to +32	0 to 9; physical calibration over range 2.6 to 6 S/m, plus zero conductivity (air)	Ambient pressure to full scale range in 5 steps
Memory	8 Mbyte non-volatile FLASH memory		
Data Storage	Recorded Parameter		Bytes/sample
	temperature + conductivity		6 (3 each)
	strain-gauge pressure		5
	each external voltage		2
	date and time (Moored mode only)		4
Real-Time Clock	32,768 Hz TCXO accurate to ±1 minute/year		
Internal Batteries	Nine alkaline D-cells - nominal capacity 14 amp-hours. Optional Ni-Cad battery pack - nominal capacity 4.4 amp-hours.		
External Power Supply	9 - 28 VDC; current requirement varies, depending on voltage and pump: <ul style="list-style-type: none"> 3 Amps at 9V input - SBE 5M pump (cannot use SBE 5T pump with 9V input) 0.5 Amps at 12V input – SBE 5M pump 3 Amps at 12V input – SBE 5T pump 0.5 Amps at 19V input – SBE 5M pump 1.5 Amps at 19V input – SBE 5T pump 		
Power Requirements	<i>Sampling:</i> 65 mA <i>Pump:</i> Standard SBE 5M 100 mA Optional SBE 5T 150 mA <i>Communications:</i> 60 mA <i>Quiescent:</i> 30 µA Moored Mode sampling time: <ul style="list-style-type: none"> Minimum 2.5 seconds/sample (pump running while sampling (MOOREDPUMPMODE=2), 1 measurement/sample, and no delays). Add 0.25 seconds for each additional measurement/sample (NCYCLES ≥ 2). Add pump on-time (0.5 second) if pump running before taking sample (MOOREDPUMPMODE=1). Add time for user-programmed delay before sampling (DELAYBEFORESAMPLING=). Approximate Battery Endurance ¹ : CTD & 5M pump, no auxiliary sensors: 60 hours in Profiling Mode, 145,000 samples in Moored Mode. ¹ With Duracell MN 1300 cells. Dependent on sampling scheme; see <i>Battery Endurance</i> for example calculations.		
Auxiliary Voltage Sensors	<i>Auxiliary power out:</i> up to 500 mA at 10.5 - 11 VDC <i>Input range:</i> 0 - 5 VDC		<i>A/D resolution:</i> 14 bits
Housing Depth Range and Materials	600 meter (1950 ft) - acetal copolymer (plastic) 7000 meter (22,900 ft) - 3AL-2.5V titanium		
Weight (without pump)	With plastic housing: <i>in air</i> 7.3 kg (16 lbs) <i>in water</i> 2.3 kg (5 lbs) With titanium housing: <i>in air</i> 13.7 kg (30 lbs) <i>in water</i> 8.6 kg (19 lbs)		
Optional Cage	Dimensions: 1016 mm x 241 mm x 279 mm (40 in. x 9.5 in. x 11 in.) Weight: 6.3 kg (14 lbs)		

Dimensions and End Cap Connectors

Dimensions in millimeters (inches)



Batteries

For the main battery, the SBE 19plus uses nine D-cell alkaline batteries or rechargeable, nickel-cadmium batteries. If necessary, carbon-zinc or mercury cells can also be used.

On-board lithium batteries (non-hazardous units which are unrestricted for shipping purposes) are provided to back-up the buffer and the real-time clock in the event of main battery failure or exhaustion. The main batteries may be replaced without affecting either the real-time clock or memory.

Battery Endurance

Notes:

- If the 19plus is logging data and the battery voltage is less than 7.5 volts, the 19plus halts logging and displays a low battery indication in the data.
- See *Data Storage and Specifications* for data storage limitations.

The standard alkaline battery pack has a nominal capacity of 14 amp-hours; for planning purposes, Sea-Bird recommends using a conservative value of 10.5 amp-hours. The optional Ni-Cad battery pack has a nominal capacity of 4.4 amp-hours.

Current consumption and sampling times vary greatly, depending on:

- instrument configuration - inclusion of optional SBE 5T pump and/or auxiliary sensors, **and**
- user-programmed sampling parameters - profiling or moored mode; if in moored mode, the pump mode, number of measurements per sample, and delay before sampling influence power consumption.

Examples are shown below for several sampling schemes for both profiling and moored mode.

Profiling Mode Examples

Example 1 - standard alkaline batteries, SBE 5M pump, no auxiliary sensors

Sampling current = 65 mA

Pump current = 100 mA

Maximum sampling time $\approx 10.5 \text{ amp-hours} / (0.065 \text{ Amps} + 0.100 \text{ Amps}) \approx 63 \text{ hours}$

Example 2 - standard alkaline batteries, optional SBE 5T pump, auxiliary sensors drawing 100 mA

Sampling current = 65 mA

Pump current = 150 mA

Auxiliary sensor current = 100 mA

Maximum sampling time $\approx 10.5 \text{ amp-hours} / (0.065 \text{ Amps} + 0.150 \text{ Amps} + 0.100 \text{ Amps}) \approx 33 \text{ hours}$

Moored Mode Examples

A 19plus with standard alkaline batteries is set up to sample autonomously every 10 minutes (6 samples/hour). How long can it be deployed?

Example 1 – SBE 5M pump on for 0.5 sec/sample (**MOOREDPUMPMODE=1**), no auxiliary sensors, 1 measurement/sample (**NCYCLES=1**):

Sampling current = 65 mA * (2.5 sec + 0.5 sec) = 0.195 amp-sec/sample
In 1 hour, sampling current = 6 * 0.195 amp-sec/sample = 1.17 amp-sec/hour

Pump current = 100 mA * 0.5 sec = 0.05 amp-sec/sample
In 1 hour, pump current = 6 * 0.05 amp-seconds/sample = 0.3 amp-sec/hour

Quiescent current = 30 microamps = 0.03 mA
In 1 hour, quiescent current ≈ 0.03 mA * 3600 sec/hour = 0.108 amp-sec/hour

Current consumption / hour = 1.17 + 0.3 + 0.108 = 1.58 amp-sec/hour

Capacity = (10.5 amp-hours * 3600 sec/hr) / (1.58 amp-sec/hour) = 23924 hours = 996 days = 2.7 years

However, Sea-Bird recommends that batteries should not be expected to last longer than 2 years in the field.

Example 2 - optional SBE 5T pump on during sample (**MOOREDPUMPMODE=2**), 15 sec delay before sampling (**DELAYBEFORESAMPLING=15**), auxiliary sensors drawing 100 mA, 4 measurements/sample (**NCYCLES=4**):

On-time = 2.5 + 15 (delay before sampling) + (4 – 1) * 0.25 (additional measurements/sample) = 18.25 sec

Sampling current = 65 mA * 18.25 sec = 1.19 amp-sec/sample

In 1 hour, sampling current = 6 * 1.19 amp-sec/sample = 7.1 amp-sec/hour

5T Pump current = 150 mA * 18.25 sec = 2.74 amp-sec/sample

In 1 hour, pump current = 6 * 2.74 amp-sec/sample = 16.4 amp-sec/hour

Auxiliary sensor current = 100 mA * 18.25 sec = 1.82 amp-sec/sample

In 1 hour, auxiliary sensor current = 6 * 1.82 amp-sec/sample = 10.9 amp-sec/hour

Quiescent current = 30 microamps = 0.03 mA

In 1 hour, quiescent current ≈ 0.03 mA * 3600 sec/hour = 0.108 amp-sec/hour

Current consumption / hour = 7.1 + 16.4 + 10.9 + 0.108 = 34.5 amp-sec/hour

Capacity = (10.5 amp-hours * 3600 sec/hr) / (34.5 amp-sec/hour) = 1095 hours = 45 days = 0.12 years

External Power

The SBE 19plus can be powered from an external source (9 - 28 volts DC) through the I/O bulkhead connector on the sensor end cap. The internal battery pack is diode-OR'd with the external source, so power will be drawn from whichever voltage source is higher. The 19plus can also be operated from the external supply without having the internal battery pack installed. Electrical isolation of conductivity is retained in units powered externally, preventing ground loop noise contamination in the conductivity measurement.

Cable Length and External Power for SBE 19plus without Deck Unit

Note:

See *Real-Time Setup* in Section 4: *Deploying and Operating SBE 19plus* for baud rate limitations on cable length if transmitting real-time data.

There are two issues to consider if powering the SBE 19plus externally:

- Limiting the communication IR loss to 1 volt **if transmitting real-time data**; higher IR loss will prevent the instrument from transmitting real-time data because of the difference in ground potential.
- Supplying enough power at the power source so that sufficient power is available at the instrument after considering IR loss.

Each issue is discussed below.

Limiting Communication IR Loss to 1 Volt if Transmitting Real-Time Data

The limit to cable length is typically reached when the maximum current during **communication** times the power common wire resistance is more than 1 volt, because the difference in ground potential of the SBE 19plus and ground controller prevents the 19plus from transmitting real-time data.

$$V_{\text{limit}} = 1 \text{ volt} = IR_{\text{limit}}$$

$$\text{Maximum cable length} = R_{\text{limit}} / \text{wire resistance per foot}$$

where I = current required by SBE 19plus during communication. The current varies, depending on operating mode:

- Profiling mode – The 19plus samples and transmits data continuously. Use the total current required for sampling (sampling, pump, auxiliary sensor current, and communication current) in the calculation.
- Moored mode – The 19plus samples, and then transmits data. Use the communication current, 60 mA, in the calculation.

Note:

Common wire resistances:

Gauge	Resistance (ohms/foot)
12	0.0016
14	0.0025
16	0.0040
18	0.0064
19	0.0081
20	0.0107
22	0.0162
24	0.0257
26	0.0410
28	0.0653

Profiling Mode Examples - for 19plus with standard SBE 5M pump and no auxiliary sensors

Example 1 – For 20 gauge wire, what is maximum distance to transmit power to 19plus if transmitting real-time data?

Current = 65 mA (sampling) + 100 mA (pump) + 60 mA (communication) = 225 mA

$$R_{\text{limit}} = V_{\text{limit}} / I = 1 \text{ volt} / 0.225 \text{ Amps} = 4.4 \text{ ohms}$$

For 20 gauge wire, resistance is 0.0107 ohms/foot.

$$\text{Maximum cable length} = 4.4 \text{ ohms} / 0.0107 \text{ ohms/foot} = 415 \text{ feet} = 126 \text{ meters}$$

Example 2 – Same as above, but there are 4 instruments powered from the same power supply.

$$R_{\text{limit}} = V_{\text{limit}} / I = 1 \text{ volt} / (0.225 \text{ Amps} * 4 \text{ instruments}) = 1.1 \text{ ohms}$$

Maximum cable length = 1.1 ohms / 0.0107 ohms/foot = 103 feet = 31 meters (to 19plus furthest from power source).

Moored Mode Examples – use 60 mA communication current, regardless of 19plus configuration

Example 1 – For 20 gauge wire, what is maximum distance to transmit power to 19plus if transmitting real-time data?

For 60 milliamp communications current, $R_{\text{limit}} = V_{\text{limit}} / I = 1 \text{ volt} / 0.060 \text{ Amps} = 16.7 \text{ ohms}$

For 20 gauge wire, resistance is 0.0107 ohms/foot.

$$\text{Maximum cable length} = 16.7 \text{ ohms} / 0.0107 \text{ ohms/foot} = 1557 \text{ feet} = 474 \text{ meters}$$

Example 2 – Same as above, but there are 4 instruments powered from the same power supply.

For 60 milliamp communications current, $R_{\text{limit}} = V_{\text{limit}} / I = 1 \text{ volt} / (0.060 \text{ Amps} * 4 \text{ instruments}) = 4.1 \text{ ohms}$

Maximum cable length = 4.1 ohms / 0.0107 ohms/foot = 389 feet = 118 meters (to 19plus furthest from power source).

Supplying Enough Power to SBE 19plus

Another consideration in determining maximum cable length is supplying enough power at the power source so that sufficient voltage is available, after IR loss in the cable (*from the turn-on transient, two-way resistance*), to power the SBE 19plus. The table summarizes the maximum 2-way resistance for various input supplies and pump configurations:

Power Supply Input and Pump Configuration	R_{limit} = Maximum 2-way Resistance (ohms)
3 Amps at 9V input, SBE 5M pump (cannot use SBE 5T pump with 9V input)	1
0.5 Amps at 12V input, SBE 5M pump	10
3.0 Amps at 12V input, SBE 5T pump	2
0.5 Amps at 19V input, SBE 5M pump	30
1.5 Amps at 19V input, SBE 5T pump	7

Calculate maximum cable length as:

$$\text{Maximum cable length} = R_{\text{limit}} / 2 * \text{wire resistance per foot}$$

Example 1 – For 20 gauge wire, what is maximum distance to transmit power to 19plus if using 12 volt power source with SBE 5T pump?

$$\text{Maximum cable length} = R_{\text{limit}} / 2 * \text{wire resistance per foot} = 2 \text{ ohms} / 2 * 0.0107 \text{ ohms/foot} = 93 \text{ ft} = 28 \text{ meters}$$

Note that 28 meters < 173 meters and 474 meters (maximum distance if transmitting real-time data in examples above), so IR drop in power is controlling factor for this example. Using a higher voltage power supply or a different wire gauge would increase allowable cable length.

Example 2 – Same as above, but there are 4 instruments powered from same power supply.

$$\text{Maximum cable length} = R_{\text{limit}} / 2 * \text{wire resistance per foot} * 4 \text{ instruments}$$

$$= 2 \text{ ohms} / 2 * 0.0107 \text{ ohms/foot} * 4 = 23 \text{ ft} = 7 \text{ meters (to 19plus furthest from power source)}$$

Data Storage

Note:

See *Battery Endurance* for power limitations.

The SBE 19plus has an 8 Mbyte memory. Shown below are calculations of available data storage for several configurations. See *Specifications* for storage space required for each parameter.

Example 1: Profiling mode, no auxiliary sensors

T & C = 6 bytes/sample

Strain-gauge P = 5 bytes/sample

Storage space $\approx 8,000,000 / (6 + 5) \approx 727,000$ samples

Example 2: Profiling mode, 4 external voltages

T & C = 6 bytes/sample

Strain-gauge P = 5 bytes/sample

External voltages = 2 bytes/sample * 4 voltages = 8 bytes/sample

Storage space $\approx 8,000,000 / (6 + 5 + 8) \approx 421,000$ samples

Example 3: Moored mode (causes 19plus to store date and time), 4 external voltages

T & C = 6 bytes/sample

Strain-gauge P = 5 bytes/sample

External voltages = 2 bytes/sample * 4 voltages = 8 bytes/sample

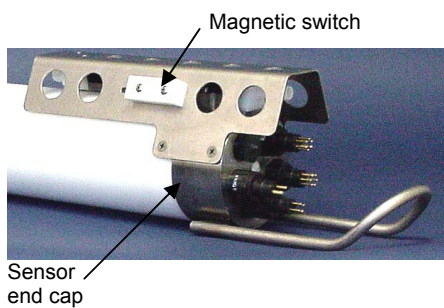
Date/Time = 4 bytes/sample

Storage space $\approx 8,000,000 / (6 + 5 + 8 + 4) \approx 347,000$ samples

Data I/O

The SBE 19plus receives setup instructions and outputs diagnostic information or previously recorded data via a three-wire RS-232C link, and is factory-configured for 9600 baud, 8 data bits, 1 stop bit, and no parity. SBE 19plus RS-232 levels are directly compatible with standard serial interface cards (IBM Asynchronous Communications Adapter or equal). The communications baud rate can be changed using **BAUD=** (see *Command Descriptions* in *Section 4: Deploying and Operating SBE 19plus*).

Magnetic Reed Switch



Profiling Mode

A magnetic switch, mounted on the conductivity cell guard, can be used to start and stop logging in Profiling mode. Sliding the switch to the On position wakes up the SBE 19plus and starts logging. Sliding the switch to the Off position stops logging. The switch should be Off (towards the sensor end cap) when the 19plus is not logging data; i.e., during setup, diagnostics, and data extraction.

The SBE 19plus can be set up to ignore the switch position:

- If **IGNORESWITCH=Y**: logging is started and stopped with commands sent through the terminal program. Switch position has no effect on logging.
- If **AUTORUN=Y**: logging is started and stopped when external power is applied and removed. Switch position has no effect on logging.

Notes:

- See *Command Descriptions* in *Section 4: Deploying and Operating SBE 19plus*.
- **Leave the switch in the Off position** if **IGNORESWITCH=Y** or **AUTORUN=Y**, or in Moored mode. If the switch is On, the 19plus draws an additional 15 μ A from the battery while in quiescent state.

Moored Mode

In moored mode, the magnetic switch position has no effect on logging. Logging is started and stopped with commands sent through the terminal program.

Configuration Options and Plumbing

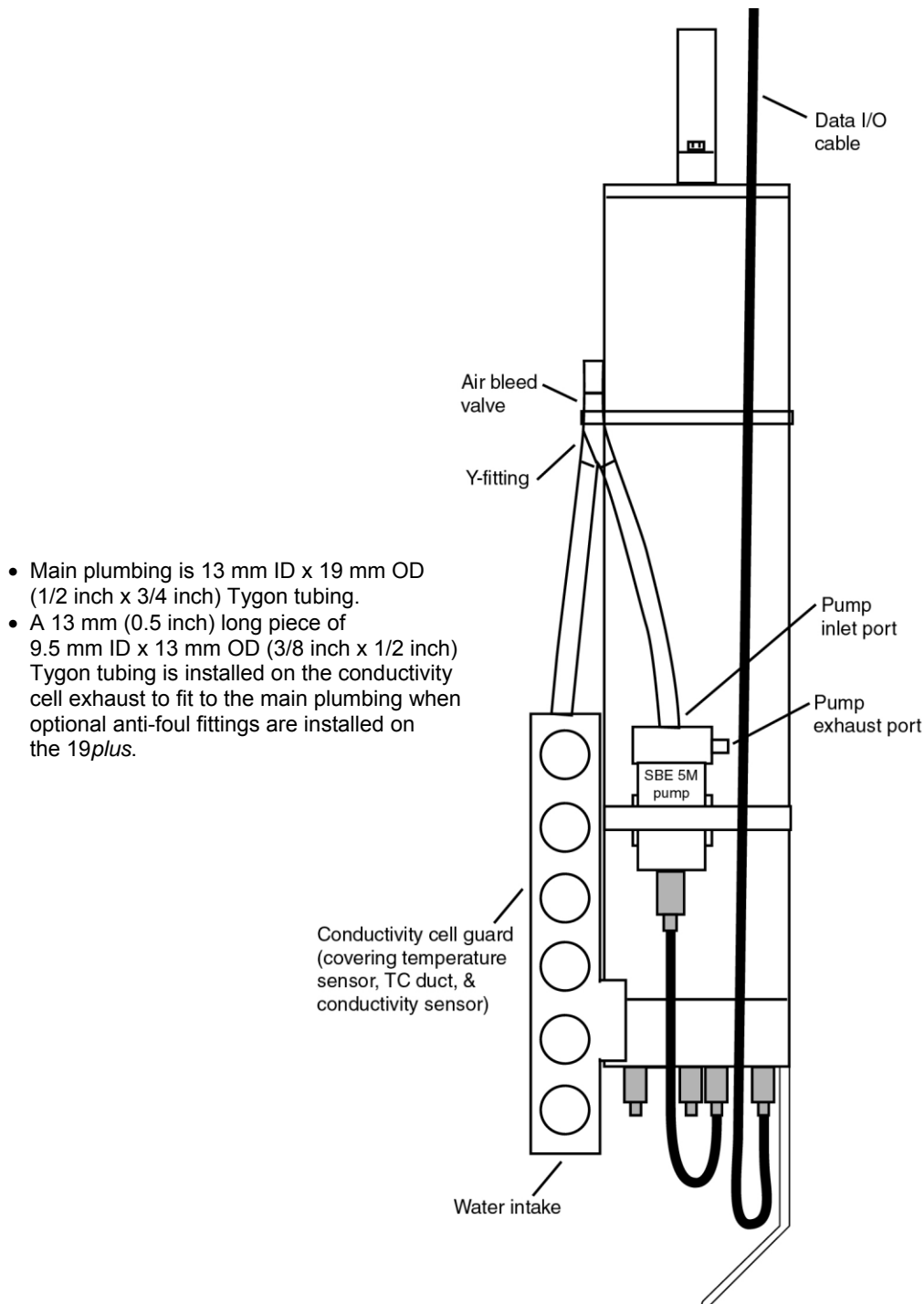
Note:

See *Section 4: Deploying and Operating SBE 19plus* for pump setup and operation.

The standard SBE 19plus includes an externally mounted SBE 5M pump, which provides a constant flow rate through the conductivity cell regardless of descent rate. If configured with a dissolved oxygen sensor or pumped fluorometer, the more powerful SBE 5T pump is used. Either pump is powered via a cable connected to the 2-pin pump bulkhead connector on the sensor end cap.

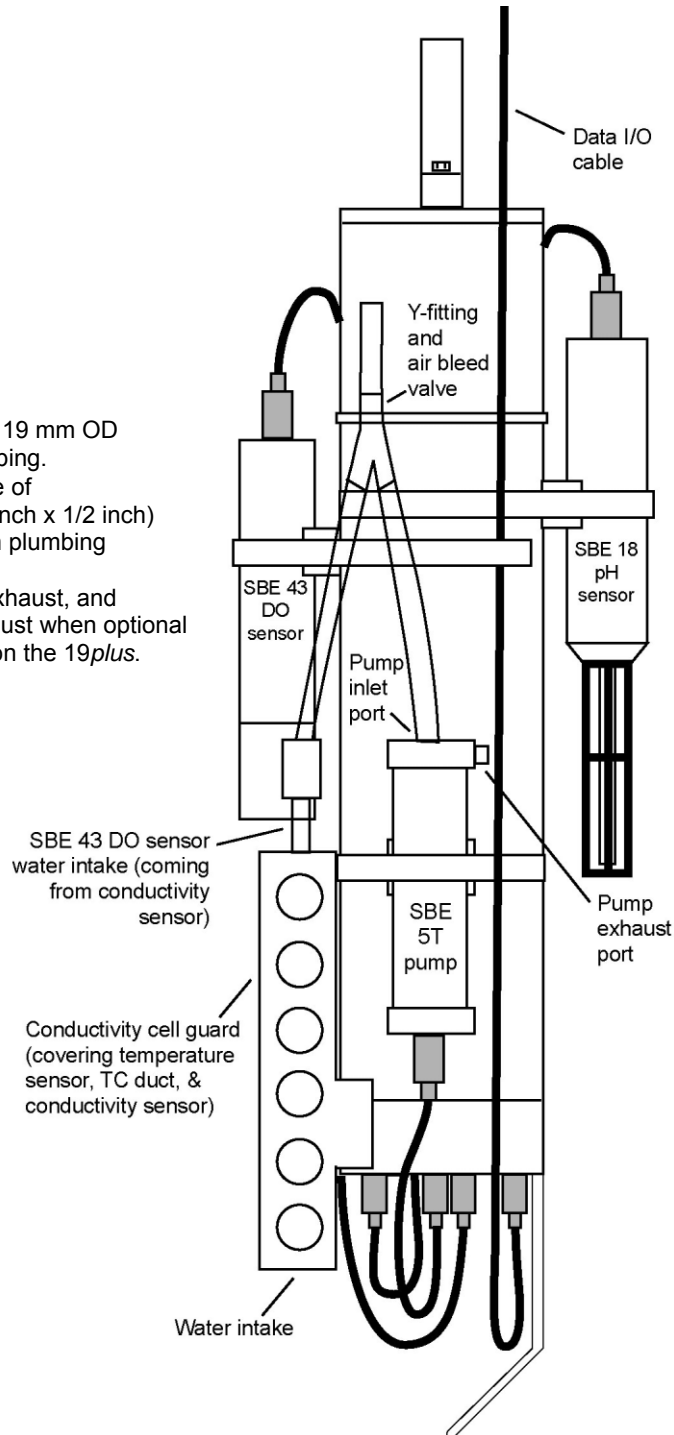
The SBE 19plus can be configured with a wide range of auxiliary sensors. Two standard 6-pin bulkhead connectors on the sensor end cap serve as the input ports for the auxiliary sensor signal voltages and provide power to the sensors. An optional connector can also be provided for interfacing with a PAR sensor.

Shown below is the plumbing arrangement of an SBE 19plus equipped with the standard SBE 5M pump.



Shown below is the SBE 19plus configured with the optional SBE 5T pump, SBE 43 dissolved oxygen (DO) sensor, and SBE 18 pH sensor. Note that the SBE 43 is plumbed into the system between the conductivity cell outlet and the Y-fitting. The SBE 18 is not connected to the plumbing.

- Main plumbing is 13 mm ID x 19 mm OD (1/2 inch x 3/4 inch) Tygon tubing.
- A 13 mm (0.5 inch) long piece of 9.5 mm ID x 13 mm OD (3/8 inch x 1/2 inch) Tygon tubing is installed:
 - on the SBE 43 intake and exhaust, and
 - on the conductivity cell exhaust when optional anti-foul fittings are installed on the 19plus.



Section 3: Power and Communications Test

This section describes software installation and the pre-check procedure for preparing the SBE 19*plus* for deployment. The power and communications test will verify that the system works, prior to deployment.

Software Installation

Recommended minimum system requirements for running SEASOFT-Win32: Pentium 90 CPU, 64 Mbyte RAM, Windows 98 or later.

Note:

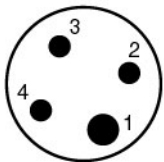
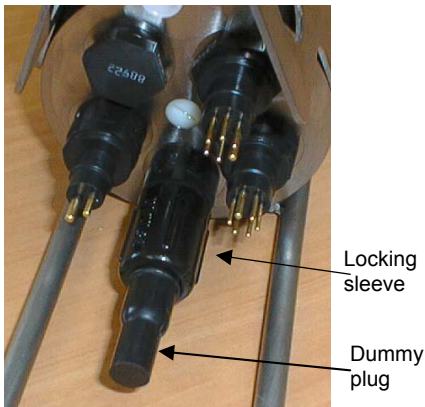
It is possible to use the 19*plus* without SEATERM by sending direct commands from a dumb terminal or terminal emulator, such as Windows HyperTerminal.

If not already installed, install SEATERM and other Sea-Bird software programs on your computer using the supplied software CD:

1. Insert the CD in your CD drive.
2. Double click on **Seasoft-Win32.exe**.
3. Follow the dialog box directions to install the software.

The default location for the software is c:/Program Files/Sea-Bird. Within that folder is a sub-directory for each program. The installation program allows you to install the desired components. Install all the components, or just install SEATERM (terminal program), SEASAVE, and SBE Data Processing.

Test Setup



Data I/O Connector (standard)

Pin	Signal
1	Common
2	Data receive
3	Data transmit
4	Auxiliary power in

1. Remove the dummy plug and install the I/O cable:
 - A. By hand, unscrew the locking sleeve from the 19*plus* I/O (4-pin) connector. If you must use a wrench or pliers, be careful not to loosen the I/O connector instead of the locking sleeve.
 - B. Remove the dummy plug from the 19*plus* I/O connector by pulling the plug firmly away from the connector.
 - C. **Standard Connector** - Install the I/O cable connector, aligning the raised bump on the side of the connector with the large pin (pin 1 - ground) on the 19*plus*. **OR**
MCBH Connector - Install the I/O cable connector, aligning the pins.

2. Connect the I/O cable connector to your computer's serial port.

Test

Note:

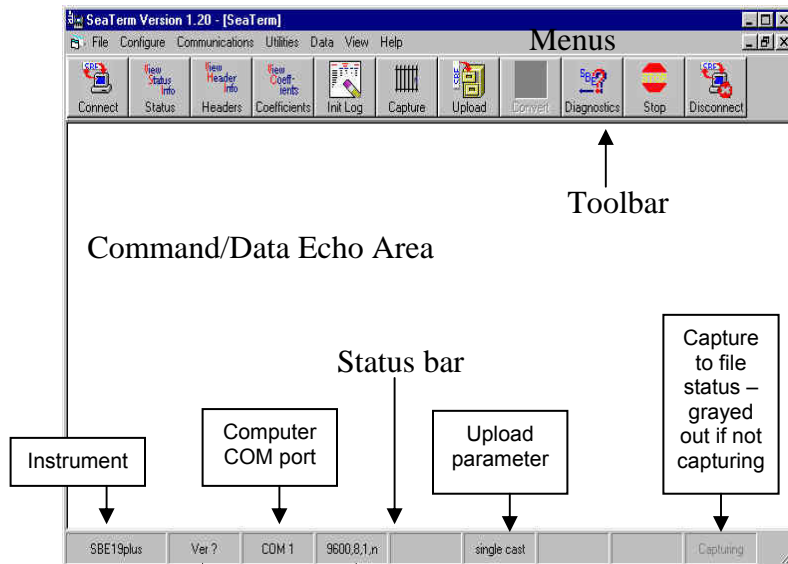
See SEATERM's Help files.

1. Double click on SeaTerm.exe. If this is the first time the program is used, the setup dialog box may appear:



Select the instrument type (*SBE 19plus*) and the computer COM port for communication with the *19plus*. Click OK.

2. The main screen looks like this:


Note:

There is at least one way, and as many as three ways, to enter a command:

- Manually type a command in Command/Data Echo Area
- Use a menu to automatically generate a command
- Use a Toolbar button to automatically generate a command

Note:

Once the system is configured and connected (Steps 3 through 5 below), to update the Status bar:

- on the Toolbar, click Status; or
- from the Utilities menu, select Instrument Status.

SEATERM sends the status command, which displays in the Command/Data Echo Area, and updates the Status bar.

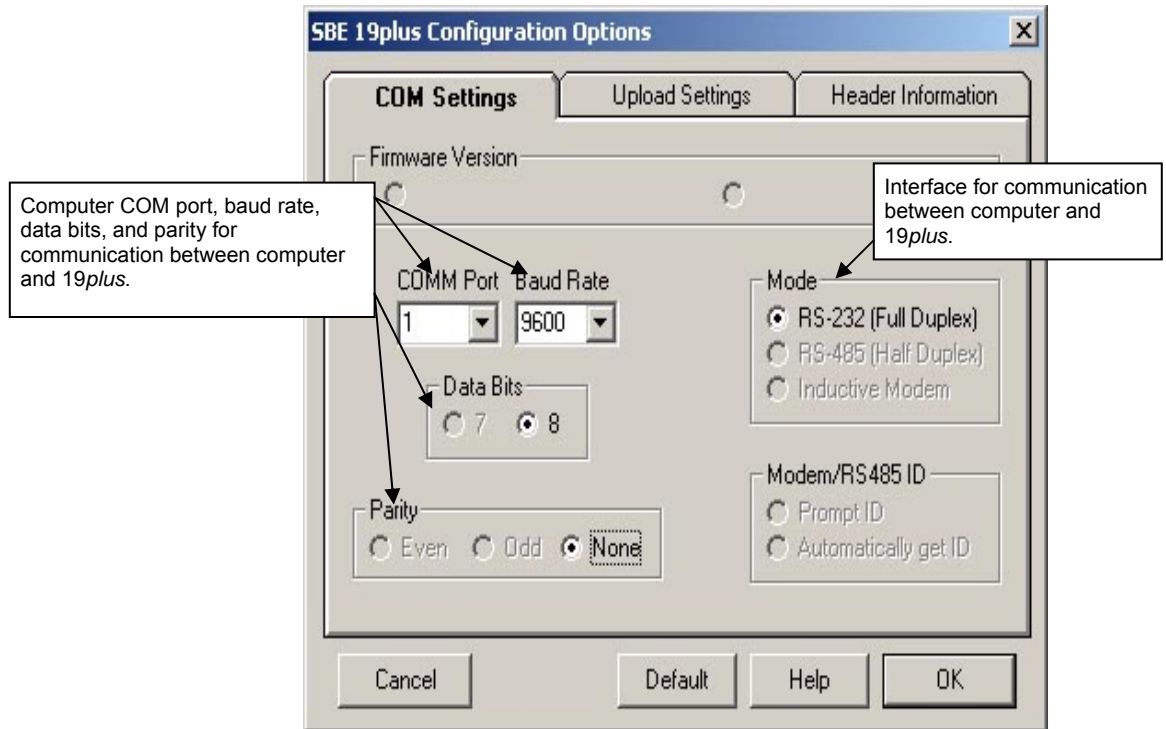
- Menu – Contains tasks and frequently executed instrument commands.
- Toolbar – Contains buttons for frequently executed tasks and instrument commands. All tasks and commands accessed through the Toolbar are also available in the Menu. To display or hide the Toolbar, select View Toolbar in the View menu. Grayed out Toolbar buttons are not applicable.
- Command/Data Echo Area – Echoes a command executed using a Menu or Toolbar button, as well as the instrument's response. Additionally, a command can be manually typed in this area, from the available commands for the instrument. Note that the instrument must be *awake* for it to respond to a command (use Connect on the Toolbar to wake up the instrument).
- Status bar – Provides status information. To display or hide the Status bar, select View Status bar in the View menu.

Following are the Toolbar buttons applicable to the SBE 19plus:

Toolbar Buttons	Description	Equivalent Command*
Connect	Re-establish communications with 19plus. Computer responds with S> prompt. 19plus goes to sleep after 2 minutes without communication from computer have elapsed.	(press Enter key)
Status	Display instrument setup and status (logging, samples in memory, etc.).	DS
Headers	View data headers (cast/header number, date and time, first and last sample in cast/header, and number of measurements to average or interval between samples). In Profiling mode, a new header is generated for each CTD cast. In Moored mode, a new header is generated at start of logging and every subsequent 1000 scans.	DH
Coefficients	Display calibration coefficients.	DCAL
Init Log	Reset data pointers and cast numbers. This should be performed after existing data has been uploaded from 19plus and prior to recording new data.	INITLOGGING
Capture	Capture instrument responses on screen to file; may be useful for diagnostics. File has .cap extension. Press Capture again to turn off capture. Capture status displays in Status bar.	—
Upload	Upload data stored in memory, in format Sea-Bird's data processing software can use (raw Hex). Uploaded data has .hex extension. Before using Upload: <ul style="list-style-type: none"> • Configure upload and header parameters in Configure menu • Stop logging (Profiling mode - slide switch off or send STOP command; Moored mode – send STOP command) 	DDb,e (use Upload button if you will be processing data with SBE Data Processing)
Diagnostics	Perform one or more diagnostic tests on 19plus. Diagnostic test(s) accessed in this manner are non-destructive – they do not write over any existing instrument settings.	DS, DCAL, TS, and TSR
Stop	Interrupt and end current activity, such as uploading or diagnostic test.	(press Esc key or Ctrl C)
Disconnect	Free computer COM port used to communicate with 19plus. COM port can then be used by another program.	—

*See *Command Descriptions* in Section 4: *Deploying and Operating SBE 19plus*.

3. In the Configure menu, select *SBE 19plus*. The dialog box looks like this:



Notes:

- SEATERM's baud rate must be the same as the *19plus* baud rate (set with **BAUD=**). Baud is factory-set to 9600, but can be changed by the user (see *Command Descriptions* in Section 4: *Deploying and Operating SBE 19plus*).
- When you click OK, SEATERM saves the Configuration Options settings to the SeaTerm.ini file in your Windows directory. SeaTerm.ini contains the last saved settings for **each** instrument. When you open SEATERM and select the desired instrument (*SBE 19plus*, 37, 39, etc.) in the Configure menu, the Configuration Options dialog box shows the last saved settings for that instrument.

Make the selections in the Configuration Options dialog box:

- **COMM Port:** COM 1 through COM 10, as applicable
- **Baud Rate:** 9600 (documented on Configuration Sheet)
- **Data Bits:** 8
- **Parity:** None
- **Mode:** RS-232 (Full Duplex)

Click OK to save the settings.

4. In the Communications menu, select *Options / Cycle baud when connecting*.
5. Click Connect on the Toolbar. SEATERM tries to connect to the *19plus* at the baud set in Step 3. If it cannot, it cycles through all other possible baud rates to try to connect. When it connects, the display looks like this:

S>

This shows that correct communications between the computer and *19plus* has been established.

If the system does not respond with the S> prompt:

- Click Connect again.
- Verify the correct instrument was selected in the Configure menu and the settings were entered correctly in the Configuration Options dialog box. Note that the baud rate is documented on the Configuration Sheet.
- Check cabling between the computer and *19plus*.

Note:

The *19plus* automatically enters quiescent (sleep) state after 2 minutes without receiving a command. This timeout algorithm is designed to conserve battery energy if the user does not send **QS** to put the *19plus* to sleep. If the system does not appear to respond, click Connect on the Toolbar to reestablish communications.

6. Display *19plus* status information by clicking Status on the Toolbar. The display looks like this:

```
SeacatPlus V 1.4D SERIAL NO. 4000 12 Aug 2004 14:02:13
vbatt = 9.6, vlith = 8.6, ioper = 61.2 ma, ipump = 25.5 ma,
iext01 = 76.2 ma
status = not logging
number of scans to average = 1
samples = 0, free = 381300, casts = 0
mode = profile, minimum cond freq = 3000, pump delay = 60 sec
autorun = no, ignore magnetic switch = no
battery type = ALKALINE, battery cutoff = 7.5 volts
pressure sensor = strain gauge, range = 1000.0
SBE 38 = no, Gas Tension Device = no
Ext Volt 0 = yes, Ext Volt 1 = yes, Ext Volt 2 = no, Ext Volt 3 = no
echo commands = yes
output format = converted decimal
output salinity = no, output sound velocity = no
```

7. Command the *19plus* to take a sample by typing **TS** and pressing the Enter key. The display looks like this (if in Profiling mode, with converted decimal output format, no output salinity or sound velocity, and auxiliary sensors on channels 0 and 1):

```
23.7658, 0.00019, 0.062, 0.5632, 2.3748
```

where 23.7658 = temperature in degrees Celsius
 0.00019 = conductivity in S/m
 0.062 = pressure in db
 0.5632 = voltage for auxiliary sensor channel 0
 2.3748 = voltage for auxiliary sensor channel 1

These numbers should be reasonable; e.g., room temperature, zero conductivity, barometric pressure (gauge pressure).

8. Command the *19plus* to go to sleep (quiescent state) by typing **QS** and pressing the Enter key.

The SBE *19plus* is ready for programming and deployment.

Section 4: Deploying and Operating SBE 19plus

Note:

Separate software manuals on CD-ROM and Help files contain detailed information on installation, setup, and use of Sea-Bird's real-time data acquisition software and data processing software.

This section includes discussions of:

- Sampling modes (Profiling and Moored), including example sets of commands
- Pump operation
- Real-time setup
- Timeout description
- Command descriptions
- Data output formats
- Optimizing data quality for Profiling applications
- Installing anti-foul fittings for Moored applications
- Deployment
- Acquiring real-time data with SEASAVE
- Recovery - physical handling and uploading data
- Processing data

Sampling Modes

The SBE 19plus has two sampling modes for obtaining data:

- Profiling mode
- Moored mode

Descriptions and examples of the sampling modes follow. Note that the SBE 19plus response to each command is not shown in the examples. Review the operation of the sampling modes and the commands described in *Command Descriptions* before setting up your system.

Profiling Mode

The SBE 19plus samples data at 4 Hz (one sample every 0.25 seconds), averages the data at pre-programmed intervals, stores the averaged data in its FLASH memory, and transmits the averaged data real-time. The SBE 19plus provides several methods for starting and stopping logging, depending on the settings for **IGNORESWITCH=** and **AUTORUN=**:

IGNORESWITCH=	AUTORUN=	To Start Logging:	To Stop Logging:
N	N	Slide magnetic switch on.	Slide magnetic switch off, or send STOP .
Y	N	Send STARTNOW , or STARTMMDDYY= , STARTHHMMSS= , and STARTLATER .	Send STOP .
Y or N	Y	Turn on external power.	<ul style="list-style-type: none"> • Turn off external power, or • (if you want to send commands to check or modify setup) Send STOP, click Stop on SEATERM's Toolbar, or type Ctrl Z.

Note:

Sea-Bird ships the 19plus with **AUTORUN=N** (it will not automatically start sampling when external power is applied). If you send **AUTORUN=Y**:

- Send **QS** to put 19plus in quiescent (sleep) state, and then turn power off and then on again to start sampling.
- or
- Send **STARTNOW** to start sampling.

Notes:

- The 19plus automatically enters quiescent state after 2 minutes without receiving a command.
- Set **OUTPUTFORMAT=0** if you will be using Sea-Bird's real-time data acquisition software (SEASAVE) or data processing software (SBE Data Processing).

Example: 19plus in Profiling mode

Wake up 19plus. Set date and time to September 1, 2004 at 9 am. Initialize logging to overwrite previous data in memory. Set up with strain-gauge pressure sensor and 1 voltage sensor, average every 4 samples, and output data in raw hex format. Set up with a 60-second pump turn-on delay after pump enters water, to ensure pump is primed before turning on. Set up to initiate logging with the magnetic switch. After all parameters are entered, verify setup with status command. Send power-off command.

(Click Connect on Toolbar to wake up.)

S>MMDDYY=090104

S>HHMMSS=090000

S>INITLOGGING

S>PTYPE=1

S>VOLT0=Y

S>NAVG=4

S>OUTPUTFORMAT=0

S>PUMPDELAY=60

S>IGNORESWITCH=N

S>DS (to verify setup)

S>QS

Start logging by putting magnetic switch in On position. Put 19plus in water, and allow to soak for at least time required for pump turn-on (**PUMPDELAY=60**) before beginning downcast. If desired, use SEASAVE to view real-time data. When cast is complete, stop logging by putting magnetic switch in Off position.

Upload data in memory, in format SBE Data Processing can use. Send power-off command.

(Click Connect on Toolbar to wake up.)

(Click Upload on Toolbar – program leads you through screens to define data to be uploaded and where to store it.)

S>QS

Notes:

- The 19plus automatically enters quiescent state after 2 minutes without receiving a command.
- Set **OUTPUTFORMAT=0** if you will be using Sea-Bird's real-time data acquisition software (SEASAVE).

Moored Mode

At pre-programmed intervals, the SBE 19plus wakes up, samples data, stores the data in its FLASH memory, and enters quiescent (sleep) state.

The 19plus goes to sleep for a minimum of 3 seconds between each sample.

Logging is started with **STARTNOW** or **STARTLATER**,

and is stopped with **STOP**. If real-time data is to be transmitted

(**MOORED TXREALTIME=Y**), data is transmitted after measurements are complete for that sample and before sampling begins for the next sample.

Example: 19plus in Moored mode

Wake up 19plus. Set date and time to September 1, 2004 at 9 am. Initialize logging to overwrite previous data in memory. Set up with strain-gauge pressure sensor and 1 voltage sensor, take a sample every 120 seconds, take and average 4 measurements for each sample, do not transmit real-time data, and output data in raw hex format. Set up pump to run for 0.5 seconds before each sample. Set up to start logging on September 15, 2004 at 11 am. Send command to start logging at designated date and time. After all parameters are entered, verify setup with status command. Send power-off command.

(Click Connect on Toolbar to wake up.)

```
S>MMDDYY=090104
S>HHMMSS=090000
S>INITLOGGING
S>PTYPE=1
S>VOLT0=Y
S>SAMPLEINTERVAL=120
S>NCYCLES=4
S>MOORED TXREALTIME=N
S>OUTPUTFORMAT=0
S>MOORED PUMP MODE=1
S>STARTMMDDYY=091504
S>STARTEHHMMSS=110000
S>STARTLATER
S>DS      (to verify setup)
S>QS
```

Deploy 19plus. Logging starts automatically at designated date and time.

Upon recovering 19plus, stop logging. Upload data in memory, in format SBE Data Processing can use. Send power-off command.

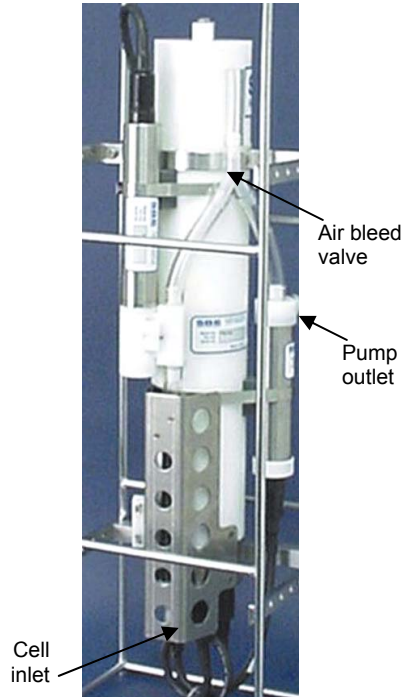
(Click Connect on Toolbar to wake up.)

```
S>STOP
```

(Click Upload on Toolbar – program leads you through screens to define data to be uploaded and where to store it.)

```
S>QS
```

Pump Operation



Profiling Mode

After the conductivity cell enters the water, there is a user-programmable delay before pump turn-on so that all the air in the pump tubing can escape. If the pump motor turns on when there is air in the impeller housing, priming is uncertain and a proper flow rate cannot be ensured. The tubing extending above the air-bleed hole will contain a small reserve of water. This maintains the pump prime (for up to 1 minute, depending on the length of tubing above the air-bleed), even if the SBE 19plus is lifted up so that the cell inlet and pump outlet are **just below** the water surface. This allows beginning the actual profile very near the top of the water. **The cell inlet and pump outlet must not come above the water surface or the prime will be lost.**

- If prime is lost: Stop logging. Wait at least 5 seconds, then start logging, submerge the SBE 19plus completely, and wait for the pump delay time before beginning the profile. (Start and stop logging with the magnetic switch, commands, or external power, depending on your setup.)

Pump turn-on occurs when two user-programmable conditions have been met:

- **Raw conductivity frequency exceeds the minimum conductivity frequency (MINCONDFREQ=)**

Set the minimum conductivity frequency for pump turn-on above the instrument's *zero conductivity raw frequency* (shown on the SBE 19plus Configuration Sheet), to prevent the pump from turning on when the 19plus is in air.

- For salt water and estuarine applications:
typical value = *zero conductivity raw frequency* + 500 Hz
- For fresh/nearly fresh water:
typical value = *zero conductivity raw frequency* + 5 Hz

If the minimum conductivity frequency is too close to the *zero conductivity raw frequency*, the pump may turn on when the SBE 19plus is in air, as a result of small drifts in the electronics. Some experimentation may be required, and in some cases it may be necessary to rely only on the pump turn-on delay time to control the pump. If so, set a minimum conductivity frequency lower than the *zero conductivity raw frequency*.

- **Pump turn-on delay time has elapsed (PUMPDELAY=)**

Set the pump turn-on delay time to allow time for the Tygon tubing and pump to fill with water after the SBE 19plus is submerged. Determine the turn-on delay by immersing the 19plus (switch off, not running) just below the air-bleed hole at the top of the Tygon tubing. Measure the time needed to completely fill the tubing (by watching for when air bubbles stop coming out of the air bleed valve); 30 seconds is typical. Set the delay to approximately 1.5 times longer. When actually using the 19plus, be sure to *soak* the instrument just under the surface for at least the time required for pump turn-on.

Pump turn-off occurs when the conductivity frequency drops below **MINCONDFREQ**.

Moored Mode

Note:

When using an oxygen sensor with the 19plus, set **MOORED PUMPMODE=2** and set **DELAYBEFORESAMPLING=** as follows:

- **SBE 43** oxygen sensor - 15 seconds, to get fresh water into the plenum for the sample
- **Beckman- or YSI-type** oxygen sensor - 120 to 180 seconds, to allow instrument to polarize

Pump operation is governed by two user-programmable parameters:

- **MOORED PUMPMODE=0, 1, or 2**
The SBE 19plus can be set up to operate with no pump (0), with a pump running for 0.5 seconds before each sample (1), or the pump running during each sample (2).
- **DELAYBEFORESAMPLING=**
The SBE 19plus can be set up to delay sampling after turning on external voltage sensors. Some instruments, such as a Sea Tech fluorometer or a Beckman- or YSI-type oxygen sensor, require time to stabilize after power is applied, to provide good quality data.

MOORED PUMPMODE= and **DELAYBEFORESAMPLING=** interact in the operation of the pump, as shown in the diagram below.

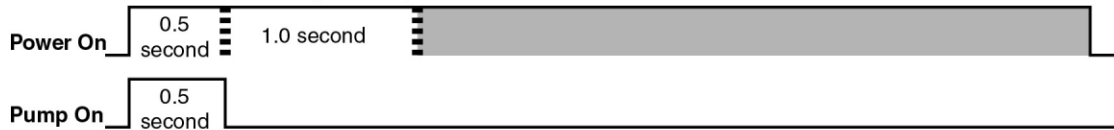
MOORED PUMPMODE=0
DELAYBEFORESAMPLING=0 (seconds)



MOORED PUMPMODE=1
DELAYBEFORESAMPLING=0 (seconds)



MOORED PUMPMODE=1
DELAYBEFORESAMPLING=1 (seconds)



MOORED PUMPMODE=2
DELAYBEFORESAMPLING=0 (seconds)



MOORED PUMPMODE=2
DELAYBEFORESAMPLING=1 (seconds)



■ = sampling time (≥ 2.5 seconds)

Note:

Sampling time includes time for instrument to warm up as well as time to actually measure parameters. The 2.5 second sampling time is for 19plus with 1 measurement / sample (**NCYCLES=1**). See *Specifications in Section 2: Description of SBE 19plus* for sampling times for other setups.

Real-Time Setup

Notes:

- Set baud rate with **BAUD=**.
- Set data storage and real-time output rate with **NAVG=** (for Profiling Mode) or **SAMPLEINTERVAL=** (for Moored Mode).
- Include auxiliary sensors in the data stream with **VOLTn=** commands.
- Set output format with **OUTPUTFORMAT=**.
- Real-time data is automatically output in Profiling Mode. In Moored Mode, set **MOORED TXREALTIME=Y** to output real-time data.
- If using external power, see *External Power* in *Section 2: Description of SBE 19plus* for power limitations on cable length.

Baud Rate and Cable Length

Without a Sea-Bird Deck Unit

The rate that real-time data can be transmitted from the SBE 19plus is dependent on the amount of data to be transmitted per scan and the serial data baud rate:

$$\text{Time required to transmit data} = \frac{\text{number of characters} * 10 \text{ bits/character}}{\text{baud rate}}$$

where

Number of characters is dependent on the included data and output format (see *Data Output Formats*).

Add 2 to the number of characters shown in the output format, to account for the carriage return and line feed at the end of each scan.

For decimal output (**OUTPUTFORMAT=2** or **3**), include decimal points, commas, and spaces when counting the number of characters.

Time required to transmit data must be less than the real-time output rate.

The length of cable that the SBE 19plus can drive is also dependent on the baud rate. The allowable combinations are:

Maximum Cable Length (meters)	Maximum Baud Rate
1600	600
800	1200
400	2400
200	4800
100	9600
50	19200
25	38400

Example 1 - 19plus without a Deck Unit. Profiling Mode, configured with 2 external voltages. What is the fastest rate you can transmit real-time data over 800 m with **OUTPUTFORMAT=0** (raw hexadecimal data)?

With 800 meters of cable and no Deck Unit, the 19plus requires a baud rate of 1200 or less.

Number of characters for **OUTPUTFORMAT=0** (from *Data Output Formats*) =

$$6 \text{ (T)} + 6 \text{ (C)} + 6 \text{ (P)} + 4 \text{ (P temperature compensation)} + 2 * 4 \text{ (external voltages)} + 2 \text{ (carriage return \& line feed)} = 32$$

Time required to transmit data = (32 characters * 10 bits/character) / 1200 =

$$0.267 \text{ seconds} > 0.25 \text{ seconds (4 Hz, maximum sampling rate)}$$

Therefore, set **NAVG=2**, averaging 2 measurements/sample and storing and transmitting 1 sample every 0.5 seconds.

Example 2 - 19plus without a Deck Unit. Moored Mode, configured with 4 external voltages, 10 measurements/sample (**NCYCLES=10**), pump running during sampling (**MOOREDPUMPMODE=2**), and a 15 second delay before sampling (**DELAYBEFORESAMPLING=15**). What is the smallest sample interval you can use if you want to transmit real-time data over 800 m with **OUTPUTFORMAT=0** (raw hexadecimal data)?

With 800 meters of cable, the 19plus requires a baud rate of 1200 or less.

Number of characters for **OUTPUTFORMAT=0** (from *Data Output Formats*) =

$$6 \text{ (T)} + 6 \text{ (C)} + 6 \text{ (P)} + 4 \text{ (P temperature compensation)} + 4 * 4 \text{ (external voltages)} + 8 \text{ (time)} + 2 \text{ (carriage return \& line feed)} = 48$$

Time required to transmit data = (48 characters * 10 bits/character) / 1200 = 0.4 seconds

Minimum time required for each sample =

$$15 \text{ seconds (delay after turning on power)} + 2.5 \text{ second sampling time} + [(10-1) * 0.25 \text{ seconds}] +$$

$$0.4 \text{ seconds to transmit real-time} + 3 \text{ seconds to go to sleep between samples} = 23.15 \text{ seconds, round up to 24}$$

Therefore, set **SAMPLEINTERVAL=24**, storing and transmitting one sample every 24 seconds.

With a Sea-Bird Deck Unit

Set the SBE 19plus baud rate to 4800 if using the 19plus with either of the following real-time data acquisition systems:

- SBE 36 CTD Deck Unit and Power and Data Interface Module (PDIM)
- SBE 33 Carousel Deck Unit and SBE 32 Carousel Water Sampler

The data telemetry link can drive 10,000 meters of cable while accepting 4800 baud serial data. The relationship between rate of transmission, amount of data to be transmitted, and baud rate is as described above for an SBE 19plus without a Deck Unit.

Example - 19plus with an SBE 33 or 36 Deck Unit. Profiling Mode, configured with 2 external voltages. What is the fastest rate you can transmit data over 800 m with OUTPUTFORMAT=0 (raw hexadecimal data)?

With a Deck Unit, the 19plus requires a baud rate of 4800.

Number of characters (from *Data Output Formats*) =

$$6 (T) + 6 (C) + 6 (P) + 4 (P \text{ temperature compensation}) + 2*4 (\text{external voltages}) + 2 (\text{carriage return \& line feed}) = 32$$

Time required to transmit data = (32 characters * 10 bits/character) / 4800 =

$$0.067 \text{ seconds} < 0.25 \text{ seconds (4 Hz, maximum sampling rate).}$$

Therefore, set NAVG=1, providing 4 Hz data (one sample every 0.25 seconds) for this configuration.

Real-Time Data Acquisition

Real-time data can be acquired in either of the following ways:

- With SEASAVE (**typical method**) – When the SBE 19plus is set up for Profiling Mode or Autonomous Sampling Moored Mode, data can be viewed in SEASAVE in tabular form or as plots, as raw data or as converted (engineering units) data. Data acquired with SEASAVE can be processed with SBE Data Processing. See SEASAVE's Help files for details on setting up the program displays, baud rates, etc., and beginning data acquisition.
- With SEATERM – Click Capture on SEATERM's Toolbar. Begin logging. The data displayed in SEATERM will be saved to the designated file. Process the data as desired. Note that this file **cannot be processed by SEASAVE or SBE Data Processing, as it does not have the required headers and format for Sea-Bird's processing software.**

Timeout Description

The SBE 19plus has a timeout algorithm. If the 19plus does not receive a command or sample data for 2 minutes, it powers down its main digital circuits. This places the 19plus in quiescent state, drawing minimal current. **To re-establish control (wake up), press Connect on the Toolbar or the Enter key.** The system responds with the S> prompt.

Command Descriptions

This section describes commands and provides sample outputs. See *Appendix III: Command Summary* for a summarized command list.

When entering commands:

- Input commands to the 19plus in upper or lower case letters and register commands by pressing the Enter key.
- The 19plus sends ?CMD if an invalid command is entered.
- If the system does not return an S> prompt after executing a command, press the Enter key to get the S> prompt.
- If a new command is not received within 2 minutes after the completion of a command, the 19plus returns to the quiescent (sleep) state.
- If in quiescent state, re-establish communications by pressing Connect on the Toolbar or the Enter key to get an S> prompt.
- If the 19plus is transmitting data and you want to stop it, press the Esc key or Stop on the Toolbar (or type ^C). Press the Enter key to get the S> prompt.
- The 19plus cannot have samples with different scan lengths (more or fewer data fields per sample) in memory. If the scan length is changed by commanding it to add or subtract a data field (such as an external voltage), the 19plus must initialize logging. Initializing logging sets the sample number and cast number to 0, so the entire memory is available for recording data with the new scan length. **Initializing logging should only be performed after all previous data has been uploaded.** Therefore, commands that change the scan length (MM, MP, PTYPE=, VOLT0=, VOLT1=, VOLT2=, and VOLT3=) prompt the user for verification before executing, to prevent accidental overwriting of existing data.
- The 19plus responds only to **DS, DCAL, TS, SL, SLT, QS, and STOP** while logging. If you wake the 19plus while it is logging (for example, to send DS to check on logging progress), it temporarily stops logging. Logging resumes when it goes to sleep again (either by sending QS or after the 2-minute timeout).
- The 19plus responds only to **DS, DCAL, TS, SL, SLT, QS, and STOP** while *waiting to start logging* (if you sent STARTLATER but logging has not started yet). To send any other commands, send STOP, send the desired commands to modify the setup, and then send **STARTLATER** again.

Entries made with the commands are permanently stored in the SBE 19plus and remain in effect until you change them.

- The only exception occurs if the electronics are removed from the housing and disconnected from the battery Molex connector (see *Appendix II: Electronics Disassembly/Reassembly*). Upon reassembly, reset the date and time (MMDDYY= and HHMMSS=) and initialize logging (INITLOGGING).

Status Command

Note:

If the battery voltage is below the battery cut-off voltage, the following displays in response to the status command: WARNING: LOW BATTERY VOLTAGE!! Replace the batteries before continuing.

DS

Display operating status and setup parameters, which vary depending on whether in Profiling or Moored mode.

Equivalent to Status on Toolbar.

List below includes, where applicable, command used to modify parameter.

Profiling Mode (MP)

- Firmware version, serial number, date and time [MMDDYY= and HHMMSS=]
- Voltages and currents (main and lithium battery voltages, operating and pump current, and external voltage currents)
- Logging status (not logging, logging, waiting to start at . . ., or unknown status)
- Number of scans to average [NAVG=]
- Number of samples, sample space, and number of casts in memory
- Profiling mode [MP], minimum conductivity frequency for pump turn-on [MINCONDFREQ=], and pump turn-on delay [PUMPDELAY=]
- Begin logging automatically when external power applied [AUTORUN=]? Ignore magnetic switch position for starting/stopping logging [IGNORESWITCH=]?
- Battery type [BATTERYTYPE=] and cut-off voltage
- Pressure sensor type [PTYPE=] and range [PRANGE=]
- Sample SBE 38 secondary temperature sensor? Sample Gas Tension Device? (custom applications)
- Sample external voltages 0, 1, 2, and 3? [VOLT0= through VOLT3=]
- Show entered commands on screen as you type [ECHO=]?
- Output format [OUTPUTFORMAT=]
- Output salinity [OUTPUTSAL=] and sound velocity [OUTPUTSV=] with each sample? (only if output format = converted decimal)
- Output sigma-t, voltage, and current with each sample? [OUTPUTUCSD=] (only if output format = converted decimal; only appears in response if set to Y)

Notes:

- If the 19plus is set up for alkaline or lithium batteries, the status command shows:
battery type = ALKALINE.
- If your 19plus includes a custom RS-232 connector for an SBE 38 or GTD, see *Addendum: Custom SBE 19plus SEACAT with Interface for RS-232 Sensor*.

Example: Profiling mode (user input shown in bold)

```
S>DS
SeacatPlus V 1.4D SERIAL NO. 4000    12 Aug 2004  14:02:13           [MMDDYY=, HHMMSS=]
vbatt = 9.6, vlith = 8.6, ioper = 61.2 ma, ipump = 25.5 ma, iext01 = 76.2 ma,
status = not logging
number of scans to average = 1                                       [NAVG=]
samples = 0, free = 381300, casts = 0
mode = profile, minimum cond freq = 3000, pump delay = 60 sec      [MP, MINCONDFREQ=, PUMPDELAY=]
autorun = no, ignore magnetic switch = no                            [AUTORUN=, IGNORESWITCH=]
battery type = ALKALINE, battery cutoff = 7.5 volts                  [BATTERYTYPE=]
pressure sensor = strain gauge, range = 1000.0                       [PTYPE=, PRANGE=]
SBE 38 = no, Gas Tension Device = no                                 (yes for custom applications only)
Ext Volt 0 = yes, Ext Volt 1 = no, Ext Volt 2 = no, Ext Volt 3 = no  [VOLT0= through VOLT3=]
echo commands = yes                                                [ECHO=]
output format = converted decimal                                    [OUTPUTFORMAT=]
output salinity = no, output sound velocity = no                    [OUTPUTSAL=, OUTPUTSV=]
```

Status Command (continued)**Note:**

If your 19plus includes a custom RS-232 connector for an SBE 38 or GTD, see *Addendum: Custom SBE 19plus SEACAT with Interface for RS-232 Sensor*.

Moored Mode (MM)

- Firmware version, serial number, date and time [MMDDYY= and HHMMSS=]
- Voltages and currents (main and lithium battery voltages, operating and pump current, and external voltage currents)
- Logging status (not logging, logging, waiting to start at . . ., or unknown status)
- Sample interval [SAMPLEINTERVAL=] and number of measurements to take and average per sample [NCYCLES=]
- Number of samples and available sample space in memory
- Moored mode [MM], pump turn-on parameter [MOOREDPUMPMODE=], and turn-on delay [DELAYBEFORESAMPLING=]
- Transmit data real-time? [MOORED TXREALTIME=]
- Battery type [BATTERYTYPE=] and battery cut-off voltage
- Pressure sensor type [PTYPE=] and range [PRANGE=]
- Sample SBE 38 secondary temperature sensor? Sample Gas Tension Device? (applicable only for custom applications)
- Sample external voltages 0, 1, 2, and 3? [VOLT0= through VOLT3=]
- Show entered commands on screen as you type [ECHO=]?
- Output format [OUTPUTFORMAT=]
- Output salinity [OUTPUTSAL=] and sound velocity [OUTPUTSV=] with each sample? (only if output format = converted decimal)
- Output sigma-t, voltage, and current with each sample? [OUTPUTUCSD=] (only if output format = converted decimal; only appears in response if set to Y)

Example: Moored mode (user input shown in bold)

```
S>DS
SeacatPlus V 1.4D SERIAL NO. 4000 12 Aug 2004 14:02:13 [MMDDYY=, HHMMSS=]
vbatt = 9.4, vlith = 8.6, ioper = 61.3 ma, ipump = 26.8 ma, iext01 = 76.2 ma,
status = not logging
sample interval = 15 seconds, number of measurements per sample = 1 [SAMPLEINTERVAL=, NCYCLES=]
samples = 0, free = 364722
mode = moored, run pump for 0.5 sec, delay before sampling = 0.0 seconds [MM, MOOREDPUMPMODE=, DELAYBEFORESAMPLING=]
transmit real-time = yes [MOORED TXREALTIME=]
battery type = ALKALINE, battery cutoff = 7.5 volts [BATTERYTYPE=]
pressure sensor = strain gauge, range = 2000.0 [PTYPE=, PRANGE=]
SBE 38 = no, Gas Tension Device = no (yes for custom applications only)
Ext Volt 0 = yes, Ext Volt 1 = no, Ext Volt 2 = no, Ext Volt 3 = no [VOLT0= through VOLT3=]
echo commands = yes [ECHO=]
output format = converted decimal [OUTPUTFORMAT=]
output salinity = no, output sound velocity = no [OUTPUTSAL=, OUTPUTSV=]
```

General Setup Commands

Notes:

- **DDMMYY=** and **MMDDYY=** are equivalent. Either can be used to set the date.
- **Always set date and then time.** If a new date is entered but not a new time, the new date will not be saved. If a new time is entered without first entering a new date, the date will reset to the last date it was set for with **MMDDYY=** or **DDMMYY=**.

MMDDYY=mmddy

Set real-time clock month, day, and year. Must be followed by **HHMMSS=** to set time.

DDMMYY=ddmmy

Set real-time clock day, month, and year. Must be followed by **HHMMSS=** to set time.

HHMMSS=hmmss

Set real-time clock hour, minute, and second.

Example: Set current date and time to 05 October 2004 12:00:00 (user input shown in bold).

S>**MMDDYY=100504**

S>**HHMMSS=120000**

or

S>**DDMMYY=051004**

S>**HHMMSS=120000**

Note:

The 19plus baud rate (set with **BAUD=**) must be the same as SEATERM's baud rate (set in the Configure menu).

BAUD=x

x= baud rate (600, 1200, 2400, 4800, 9600, 19200, or 38400). Default 9600.

ECHO=x

x=Y: Echo characters received from computer (default) - computer monitor will show entered commands as you type.
x=N: Do not.

Note:

If the 19plus is set up for alkaline or lithium batteries, the status command (**DS**) response shows:
battery type = ALKALINE.

BATTERYTYPE=x

x=0: Alkaline (or lithium) batteries. Logging stops when battery drops below 7.5 volts for 5 consecutive scans. This reduces battery load to quiescent current.
x=1: Ni-Cad batteries. Logging stops when battery drops below 7.5 volts for 5 consecutive scans or battery voltage is less than 10.2 volts and voltage drop is greater than 1 volt/minute as determined by two 30-second moving averages. This reduces battery load to quiescent current once first cell in battery pack is exhausted.

Notes:

- **INITLOGGING** and **SAMPLENUMBER=0** have identical effects. Use either to initialize logging.
- Initializing logging sets sample, header, and cast number to 0 *internally*. However, for data output, the first sample, header, and cast number is 1.
- **Do not initialize logging until all data has been uploaded.** These commands do not delete data; they reset the data pointer. **If you accidentally initialize logging before uploading, recover data as follows:**
 1. Set **SAMPLENUMBER=a** and **HEADERNUMBER=b**, where **a** and **b** are your estimate of number of samples and casts in memory.
 2. Upload data. If **a** is more than actual number of samples or **b** is more than actual number of casts in memory, data for non-existent samples/casts will be bad, random data. Review uploaded data file carefully and delete any bad data.
 3. If desired, increase **a** and/or **b** and upload data again, to see if there is additional valid data in memory.

General Setup Commands (continued)**INITLOGGING**

Initialize logging - after all previous data has been uploaded, initialize logging before starting to sample again to make entire memory available for recording. **INITLOGGING** sets sample number (**SAMPLENUMBER=**) and header and cast number (**HEADERNUMBER=**) to 0 internally. If not set to 0, data will be stored after last recorded sample. **Do not send INITLOGGING until all existing data has been uploaded.**

SAMPLENUMBER=x

x= sample number for first sample when logging begins. After all previous data has been uploaded, send **SAMPLENUMBER=0** (sets sample, header, and cast number to 0 internally) before starting to sample to make entire memory available for recording. If not set to 0, data will be stored after last recorded sample. **Do not send SAMPLENUMBER=0 until all existing data has been uploaded.**

HEADERNUMBER=x

x= header and cast number for first cast when Profiling Mode logging begins or first header when Moored Mode logging begins. Typically used to recover data if you accidentally initialize logging (using **INITLOGGING** or **SAMPLENUMBER=0**) before uploading all existing data. Note that 19plus writes new header:

- each time logging is started in Profiling Mode
- each time logging is started and/or after every 1000 samples are stored in memory in Moored Mode.

FLASHINIT

Map bad blocks and erase FLASH memory, **destroying all data**. 19plus requires you to enter command twice, to provide verification before it proceeds. All data bits are set to 1. Sample number, header number, and data pointers are set to 0. Allow 15 minutes for process.

Send **FLASHINIT** (after uploading all data) if there are FLASH Read errors in Status (**DS**) response. If not encountering errors, **FLASHINIT** is optional, as 19plus writes over recorded information when **INITLOGGING** is used before beginning logging. However, knowledge of initial memory contents (i.e., all 1's) can be useful cross-check when data is retrieved.

QS

Quit session and place 19plus in quiescent (sleep) state. Main power turned off. Data logging and memory retention not affected.

Notes:

- The 19plus requires verification when these commands (**PTYPE=** through **VOLT3=**) are sent. 19plus responds:
this command will change the scan length and initialize logging. Proceed Y/N?
Press Y and the Enter key to proceed. The 19plus responds:
Scan length has changed, initializing logging
- The 19plus configuration (.con) file must match this selection of pressure sensor and external voltages when viewing real-time data in SEASAVE or processing uploaded data. View and edit the .con file in SEASAVE or SBE Data Processing. Note that these parameters are factory-set to match the ordered instrument configuration.
- External voltage numbers 0, 1, 2, and 3 correspond to wiring of sensors to a voltage channel on the 19plus end cap (see *Dimensions and End Cap Connectors* in *Section 2: Description of SBE 19plus*). However, in the .con file, voltage 0 is the first external voltage in the data stream, voltage 1 is the second, etc.

Sensor Setup Commands

PTYPE=x	Pressure sensor type. x=1: Strain-gauge. x=0: No pressure sensor (not applicable to 19plus). x=2: Quartz without temperature compensation (not applicable to 19plus). x=3: Quartz with temperature compensation (not applicable to 19plus).
VOLT0=x	x=Y: Enable external voltage 0. x=N: Do not.
VOLT1=x	x=Y: Enable external voltage 1. x=N: Do not.
VOLT2=x	x=Y: Enable external voltage 2. x=N: Do not.
VOLT3=x	x=Y: Enable external voltage 3. VOLT3=Y is required if PAR sensor connected to optional PAR connector on 19plus. x=N: Do not.

Example: Enable voltage sensors wired to channels 0 and 3 on end cap (user input shown in bold).

```
S>VOLT0=Y
S>VOLT1=N
S>VOLT2=N
S>VOLT3=Y
```

There will be 2 external sensor voltages in data stream. In .con file (in SBE Data Processing or SEASAVE), indicate 2 external voltage channels. Voltage 0 corresponds to sensor wired to external voltage channel 0; voltage 1 corresponds to sensor wired to external voltage channel 3.

Output Format Commands

Note:

Output format does not affect how data is stored in FLASH memory. Sea-Bird's real-time data acquisition (SEASAVE) and data processing (SBE Data Processing) software require data in raw hexadecimal (**OUTPUTFORMAT=0**).

Typical use of the output format command is:

- Before beginning a cast:
 - **If you will use SEASAVE to view real-time data** - Set output format to raw hex.
 - **If you will use SEATERM to view real-time data** - Set output format to converted decimal for ease in viewing real-time data.
- After the cast is complete, use SEATERM's Upload button to upload data from memory. This automatically resets the format to raw hex (**OUTPUTFORMAT=0**), so the data is compatible with SBE Data Processing.

OUTPUTFORMAT=x

x=0: Output raw frequencies and voltages in hexadecimal. **Must use this format for acquiring and viewing real-time data in SEASAVE.** When using SEATERM's Upload button, SEATERM sends **OUTPUTFORMAT=0**, causing 19plus to upload data from memory in raw hex, regardless of user-programmed **OUTPUTFORMAT**.

x=1: Output converted (engineering units) data in hexadecimal.

x=2: Output raw frequencies and voltages in decimal.

x=3: Output converted (engineering units) data in decimal. Required to output salinity, sound velocity, sigma-t, battery voltage, or operating current.

x=4: Output pressure and scan number only, in hexadecimal. Typically used only for interfacing with Auto Fire Module (AFM).

OUTPUTSAL=x

x=Y: Calculate and output salinity (psu). Only applies if **OUTPUTFORMAT=3**.

x=N: Do not.

OUTPUTSV=x

x=Y: Calculate and output sound velocity (m/sec), using Chen and Millero formula (UNESCO Technical Papers in Marine Science #44). Only applies if **OUTPUTFORMAT=3**.

x=N: Do not.

OUTPUTUCSD=x

x=Y: Calculate and output density sigma-t (kg/m^3), battery voltage, and operating current (mA). Voltage and current measured after delay before sampling, but before sampling. Only applies if **OUTPUTFORMAT=3**.

x=N: Do not.

Profiling Mode Setup Commands

Note:

The 19plus requires verification when **MP** is sent. 19plus responds: this command will change the scan length and initialize logging. Proceed Y/N? Press Y and the Enter key to proceed. 19plus responds: Scan length has changed, initializing logging.

Note:

See *Pump Operation* for details.

Profiling mode setup commands following MP apply to profiling mode only, and have no effect on operation if the SBE 19plus is in moored mode.

MP

Set 19plus to Profiling mode.

MINCONDFREQ=x

x= minimum conductivity frequency (Hz) to enable pump turn-on, to prevent pump from turning on before 19plus is in water. Pump stops when conductivity frequency drops below **MINCONDFREQ**=. 19plus Configuration Sheet lists uncorrected (raw) frequency output at 0 conductivity. Typical value (and factory-set default) for **MINCONDFREQ**= for salt water and estuarine application is: (0 conductivity frequency + 500 Hz). Typical value for **MINCONDFREQ**= for fresh water applications is: (0 conductivity frequency + 5 Hz).

PUMPDELAY=x

x= time (seconds) to wait after minimum conductivity frequency (**MINCONDFREQ**=) is reached before turning pump on. Pump delay time allows time for Tygon tubing and pump to fill with water after 19plus is submerged. Typical value is 30 - 45 seconds. Pump starts **PUMPDELAY**= seconds after conductivity cell's frequency output is greater than **MINCONDFREQ**=. Default 60 seconds.

IGNORESWITCH=x

x=Y: Do not start or stop logging based on position of magnetic switch. Use **STARTNOW**, **STARTLATER**, and **STOP** to control logging.

x=N: Do not ignore magnetic switch position. Logging controlled by switch position **or** by commands.

AUTORUN=x

x=Y: Start logging automatically when **external power** applied; stop logging when external power removed. Magnetic switch position has no effect on logging.

x=N: Wait for command when external power applied. Default.

NAVG=x

x= number of samples to average (default 1, maximum 32,767). 19plus samples at 4 Hz (every 0.25 seconds) and averages **NAVG** samples; averaged data is stored in FLASH memory and transmitted real-time.

Notes:

To start sampling immediately after you send **AUTORUN=Y** (if you were performing setup on external power):

- Send **QS** to put 19plus in quiescent (sleep) state, and then turn external power off and then on again. **or**
- Send **STARTNOW**.

*Example: 19plus samples every 0.25 seconds. If **NAVG=2**, 19plus averages data from 2 samples (= 1 averaged data sample per 0.5 seconds), stores averaged data in FLASH memory, and transmits averaged data real-time.*

Moored Mode Setup Commands

Note:

The 19plus requires verification when **MM** is sent. 19plus responds: this command will change the scan length and initialize logging. Proceed Y/N? Press Y and the Enter key to proceed. 19plus responds: Scan length has changed, initializing logging.

Moored mode setup commands following MM apply to moored mode only, and have no effect on operation if the SBE 19plus is in profiling mode.

MM

Set 19plus to Moored mode.

MOORED TXREALTIME=x

x=Y: Output real-time data.
x=N: Do not.

DELAYBEFORESAMPLING=x

x= time (seconds) to wait after switching on external voltage before sampling (0-32,000 seconds). Default 0 seconds. Typical values if using:
 - Sea Tech fluorometer - 15 seconds.
 - SBE 43 oxygen sensor – 15 seconds.
 - Beckman- or YSI-type oxygen sensor – 120 to 180 seconds.

Notes:

- See *Pump Operation* for a detailed explanation of how **DELAYBEFORESAMPLING=** affects pump operation. When using an oxygen sensor, set **MOORED PUMP MODE=2**.
- **NCYCLES=** and **DELAYBEFORESAMPLING=** affect the time required to sample. If these are too high, the 19plus is unable to take the required number of measurements and do the calculations within **SAMPLEINTERVAL=**. When it is beginning to log, the 19plus checks all parameters, and if necessary it internally increases **SAMPLEINTERVAL=**.

MOORED PUMP MODE=x

x=0: No pump.
x=1: Run pump for 0.5 seconds before each sample.
x=2: Run pump during each sample.

SAMPLEINTERVAL=x

x= interval (seconds) between samples (10 - 14,400 seconds).

NCYCLES=x

x= number of measurements to take and average every **SAMPLEINTERVAL** seconds (default = 1). 19plus takes and averages **NCYCLES** samples (each 0.25 seconds apart) each **SAMPLEINTERVAL** seconds; averaged data is stored in FLASH memory and (if **MOORED TXREALTIME=Y**) transmitted real-time.

Example: If **SAMPLEINTERVAL=10** and **NCYCLES=4**, every 10 seconds 19plus takes 4 samples (each 0.25 seconds apart), averages data from 4 samples, and stores averaged data in FLASH memory.

Notes:

- In SEATERM, to save real-time data to a file, click Capture on the Toolbar before beginning logging.
- If the FLASH memory is filled to capacity, data sampling and transmission of real-time data continue, but excess data is not saved in memory.
- If the 19plus is sampling data and the voltage is less than the cut-off voltage for five consecutive scans, the 19plus halts logging and displays WARNING: LOW BATTERY VOLTAGE in response to the status (DS) command.

Note:

Sea-Bird ships the 19plus with **AUTORUN=N** (it will not automatically start sampling when external power is applied). If you send **AUTORUN=Y**:

- Send **QS** to put 19plus in quiescent (sleep) state, then turn power off and then on again to start sampling, **or**
- Send **STARTNOW** to start sampling.

Note:

For Moored mode, the magnetic switch should be left off, but it has no effect on logging. If the switch is turned on while the 19plus is in quiescent state, the CPU enters the awake state but logging does not begin. If no communications are established, the 19plus times out and enters quiescent state after 2 minutes.

Logging Commands

Logging commands direct the SBE 19plus to sample data. When commanded to start sampling, the 19plus takes samples and stores the data in its FLASH memory. Operation is dependent on the mode and setup.

Profiling Mode (MP)

While logging, the SBE 19plus transmits real-time data, and does not enter quiescent (sleep) state between samples. The 19plus provides several methods for starting and stopping logging, depending on the settings for **IGNORESWITCH=** and **AUTORUN=**. Logging starts approximately 5 seconds after it is commanded.

IGNORESWITCH=	AUTORUN=	To Start Logging:	To Stop Logging:
N	N	Slide magnetic switch on.	Slide magnetic switch off, send STOP , or click Stop on SEATERM's Toolbar.
Y	N	Send STARTNOW , or STARTMMDDYY= , STARTHHMMSS= , and STARTLATER .	Send STOP or click Stop on SEATERM's Toolbar.
Y or N	Y	Turn on external power.	<ul style="list-style-type: none"> • Turn off external power, or • (if you want to send commands to check or modify setup) Send STOP, click Stop on SEATERM's Toolbar, or type Ctrl Z.

The first time logging is started after receipt of the initialize logging command (**INITLOGGING**), data recording starts at the beginning of memory and any previously recorded data is written over. When logging is stopped, recording stops. Each time logging is started again, recording continues, with new data stored after the previously recorded data and a new header written to indicate the incremented cast number, date, time, and sample numbers contained in the cast. The maximum number of casts that can be taken is 300.

Moored Mode (MM)

While logging, the SBE 19plus transmits real-time data if **MOORED TXREALTIME=Y**. The 19plus enters quiescent (sleep) state between samples.

To start logging, use **STARTNOW** or **STARTLATER**. Logging starts approximately 5 seconds after receipt of **STARTNOW**. The first time logging is started after receipt of the initialize logging command (**INITLOGGING**), data recording starts at the beginning of memory and any previously recorded data is written over. When **STOP** is sent, recording stops. Each time **STARTNOW** or **STARTLATER** is sent again, recording continues, with new data stored after the previously recorded data. A new header is written each time logging starts and every 1000 samples thereafter.

Logging Commands (*continued*)**Notes:**

- **STARTDDMMYY=** and **STARTMMDDYY=** are equivalent. Either can be used to set the delayed start date.
- If using **STARTNOW** or **STARTLATER** to start logging, the 19plus must be set to Moored mode (**MM**), or if in Profiling mode (**MP**) must be set to ignore the magnetic switch (**IGNORESWITCH=Y**).
- After receiving **STARTLATER**, the 19plus displays `waiting to start at . . .` in reply to **DS**. Once logging starts, the **DS** reply displays `logging`.
- If the delayed start date and time has already passed when **STARTLATER** is received, the 19plus executes **STARTNOW**.

Notes:

- You may need to send **STOP** several times to get the 19plus to respond.
- If in Profiling mode and **IGNORESWITCH=N**, slide the magnetic switch off or send **STOP** to stop logging.
- You must stop logging before uploading data.

STARTNOW

Start logging now.

STARTMMDDYY=mmddyySet delayed logging start month, day, and year. Must be followed by **STARTHHMMSS=** to set delayed start time.**STARTDDMMYY=ddmmyy**Set delayed logging start day, month, and year. Must be followed by **STARTHHMMSS=** to set delayed start time.**STARTHHMMSS=hhmmss**

Set delayed logging start hour, minute, and second.

STARTLATER

Start logging at time set with delayed start date and time commands.

Example: Program 19plus to start logging on 20 January 2005 12:00:00. (user input shown in bold)

```
S>STARTMMDDYY=012005
S>STARTHHMMSS=120000
S>STARTLATER
```

or

```
S>STARTDDMMYY=200105
S>STARTHHMMSS=120000
S>STARTLATER
```

STOP

Stop logging or stop waiting to start logging (if **STARTLATER** was sent but logging has not begun yet). Press Enter key to get S> prompt before entering **STOP**.

Data Upload Commands**Notes:**

- **Use Upload on the Toolbar or Upload Data in the Data menu to upload data that will be processed by SBE Data Processing.** Manually entering **DDb,e** does not produce data with the required header information for processing by our software. These commands are included here for reference for users who are writing their own software.
- To save data to a file, click Capture on the Toolbar before entering **DDb,e**, **DCx**, or **DHb,e**.
- See *Data Output Formats*.

Stop logging before uploading data.

DDb,e

Upload data from sample **b** to sample **e**.
If **b** and **e** are omitted, all data is uploaded.
First sample number is 1.

Example: Upload samples 1 - 199 to a file (user input shown in bold):
(Click Capture on Toolbar and enter desired filename in dialog box.)
S>**DD1,199**

DCx**Profiling mode only.**

Upload data from cast **x**. If **x** is omitted,
data from cast 1 is uploaded.
First cast number is 1.

Example: Upload all data in second cast (cast 2) to a file (user input shown in bold):
(Click Capture on Toolbar and enter desired filename in dialog box.)
S>**DC2**

DHb,e

Upload header **b** to header **e**. If **b** and **e** are omitted, all headers are uploaded. First header number is 1. Header includes:

- cast/header number
- month, day, hour, minute, and second when cast was started
- first and last sample in cast/header
- **Profiling mode only** - number of measurements to average per sample (**NAVG=**)
- **Moored mode only** - interval between samples (**SAMPLEINTERVAL=**)
- reason logging was halted
(batfail = battery voltage too low;
mag switch = switch turned off;
stop cmd = received **STOP** command or Home or Ctrl Z character;
timeout = error condition;
unknown = error condition;
????? = error condition)

Examples:

Profiling Mode - Upload second header (header for cast 2) to a file:
(Click Capture on Toolbar and enter desired filename in dialog box.)

S>**DH2**

19plus responds:

cast 2 30 Nov 2005 12:30:33 samples 35 to 87, avg = 4, stop = mag switch

Moored Mode - Upload second header to a file:

(Click Capture on Toolbar and enter desired filename in dialog box.)

S>**DH2**

19plus responds:

hdr 2 30 Nov 2005 12:30:33 samples 35 to 87, int = 10, stop = stop cmd

Polled Sampling Commands

Notes:

- The 19plus has a buffer that stores the most recent data samples. Unlike data in the FLASH memory, data in the buffer is erased upon removal or failure of power.
- *Leave power on* in the **SL**, **SLT**, **TS**, and **TSSON** descriptions refers to power for the 19plus as well as for any auxiliary sensors.

These commands request a single sample. The SBE 19plus always stores data for the most recent sample in its buffer. Some polled sampling commands also store data in FLASH memory - the 19plus will not execute the *store data in FLASH memory* portion of those commands while logging data.

SL	Output last sample from buffer (obtained with polled sampling, or latest sample from logging), and leave power on.
SLT	Output last sample from buffer, then take new sample and store data in buffer. Leave power on. Data is not stored in FLASH memory.
TS	Take new sample, store data in buffer, output data, and leave power on. Data is not stored in FLASH memory.
TSS	Take new sample, store data in buffer and FLASH memory , output data, and turn power off.
TSSON	Take new sample, store data in buffer and FLASH memory , output data, and leave power on.

Testing Commands

The SBE 19plus takes and outputs **100 samples** for each test (except as noted); data is **not** stored in FLASH memory. Press the Esc key or Stop on the Toolbar to stop a test.

TT	Measure temperature, output converted data.
TC	Measure conductivity, output converted data.
TP	Measure pressure, output converted data.
TV	Measure four external voltage channels, output converted data.
TTR	Measure temperature, output raw data.
TCR	Measure conductivity, output raw data.
TPR	Measure pressure, output raw data.
TVR	Measure voltages read by A/D converter, output raw data.

Column	Output
1	Main battery voltage / 11
2	Back-up lithium battery voltage / 3.741
3	External current / 333.33
4	Pressure temperature voltage
5 – 8	External voltages

PUMPON	Turn pump on for testing purposes.
PUMPOFF	Turn pump off for testing purposes.

Calibration Coefficients Commands

Notes:

- Dates shown are when calibrations were performed. Calibration coefficients are initially factory-set and should agree with Calibration Certificates shipped with 19plus.
- See individual Coefficient Commands below for definitions of the data in the example.

DCAL

Display calibration coefficients.
Equivalent to Coefficients on Toolbar.

Example: Display coefficients for 19plus (user input shown in bold).

```
S>dcal
SeacatPlus V 1.4D SERIAL NO. 4000 25 Jul 2004 14:46:05
temperature: 20-jul-04
  TA0 = -3.178124e-06
  TA1 = 2.751603e-04
  TA2 = -2.215606e-06
  TA3 = 1.549719e-07
  TOFFSET = 0.000000e+00
conductivity: 20-jul-04
  G = -9.855242e-01
  H = 1.458421e-01
  I = -3.290801e-04
  J = 4.784952e-05
  CF0 = 2.584100e+03 (not used in calculations; ignore)
  CPCOR = -9.570000e-08
  CTCOR = 3.250000e-06
  CSLOPE = 1.000000e+00
pressure S/N , range = 2000 psia: 14-jul-04
  PA0 = 0.000000e+00
  PA1 = 0.000000e+00
  PA2 = 0.000000e+00
  PTEMPA0 = 0.000000e+00
  PTEMPA1 = 0.000000e+00
  PTEMPA2 = 0.000000e+00
  PTCA0 = 0.000000e+00
  PTCA1 = 0.000000e+00
  PTCA2 = 0.000000e+00
  PTCB0 = 0.000000e+00
  PTCB1 = 0.000000e+00
  PTCB2 = 0.000000e+00
POFFSET = 0.000000e+00
volt 0: offset = 0.000000e+00, slope = 1.000000e+00
volt 1: offset = 0.000000e+00, slope = 1.000000e+00
volt 2: offset = 0.000000e+00, slope = 1.000000e+00
volt 3: offset = 0.000000e+00, slope = 1.000000e+00
  EXTFREQSF = 1.000000e+00 (not used in calculations; ignore)
```

Calibration Coefficients Commands (*continued*)**Notes:**

- F = floating point number
S = string with no spaces
- If using auxiliary A/D sensors (**VOLT0=** through **VOLT3=**), their calibration coefficients are not stored in the 19plus EEPROM, but are stored in the 19plus configuration (.con) file. View and/or modify the calibration coefficients using the Configure menu in SBE Data Processing or SEASAVE.

The individual commands listed below are used to modify a particular coefficient or date:

Temperature

TCALDATE=S	S=calibration date
TA0=F	F=A0
TA1=F	F=A1
TA2=F	F=A2
TA3=F	F=A3
TOFFSET=F	F=offset correction

Conductivity

CCALDATE=S	S=calibration date
CG=F	F=G
CH=F	F=H
CI=F	F=I
CJ=F	F=J
CPCOR=F	F=pcor
CTCOR=F	F=tcor
CSLOPE=F	F=slope correction

Pressure - General

PCALDATE=S	S=calibration date
PRANGE=F	F=sensor full scale range (psi)
POFFSET=F	F=offset correction

Strain-Gauge Pressure

PA0=F	F=A0
PA1=F	F=A1
PA2=F	F=A2
PTEMPA0=F	F=pressure temperature A0
PTEMPA1=F	F=pressure temperature A1
PTEMPA2=F	F=pressure temperature A2
PTCA0=F	F=pressure temperature compensation ptca0
PTCA1=F	F=pressure temperature compensation ptca1
PTCA2=F	F=pressure temperature compensation ptca2
PTCB0=F	F=pressure temperature compensation ptcb0
PTCB1=F	F=pressure temperature compensation ptcb1
PTCB2=F	F=pressure temperature compensation ptcb2

Data Output Formats

Note:

If your 19plus includes a custom RS-232 connector for an SBE 38 or GTD, see *Addendum: Custom SBE 19plus SEACAT with Interface for RS-232 Sensor*.

Note:

Moored mode - For date and time output, time is the time at the **start** of the sample, after:

- a small amount of time (1 to 2 seconds) for the 19plus to wake up and prepare to sample, and
- any programmed **DELAYBEFORESAMPLING=**.

For example, if the 19plus is programmed to wake up and sample at 12:00:00, and **DELAYBEFORESAMPLING=20**, the output time for the first sample will be 12:00:21 or 12:00:22.

Notes:

- If you will be using SEASAVE to acquire real-time data, you must set **OUTPUTFORMAT=0**.
- When using SEATERM's Upload button, SEATERM sends **OUTPUTFORMAT=0**. This causes the 19plus to upload data in memory in raw hex, regardless of the user-programmed format, providing the data in a format that SBE Data Processing can use.
- Our software uses the equations shown to perform these calculations; alternatively, you can use the equations to develop your own processing software.
- The pressure sensor is an absolute sensor, so its **raw** output includes the effect of atmospheric pressure (14.7 psi). As shown on the Calibration Sheet, Sea-Bird's calibration (and resulting calibration coefficients) is in terms of psia. However, when outputting pressure in **engineering units**, the 19plus outputs pressure relative to the ocean surface (i.e., at the surface the output pressure is 0 decibars). The 19plus uses the following equation to convert psia to decibars:
pressure (db) =
[pressure (psia) - 14.7] * 0.689476

The SBE 19plus stores data in a compact machine code. Data is converted and output in the user-selected format without affecting data in memory. Because memory data remains intact until deliberately overwritten, you can upload in one format, then choose another format and upload again.

Output format is dependent on **OUTPUTFORMAT= (0, 1, 2, 3, or 4)**, as detailed below. The inclusion of some data is dependent on the system configuration - if the system does not include the specified sensor, the corresponding data is not included in the output data stream, shortening the data string.

OUTPUTFORMAT=0 (raw frequencies and voltages in Hex)

Data is output in the order listed, with no spaces or commas between parameters. Shown with each parameter is the number of digits, and how to calculate the parameter from the data (use the decimal equivalent of the hex data in the equations).

1. Temperature
A/D counts = tttttt
2. Conductivity
conductivity frequency (Hz) = cccccc / 256
3. Pressure
A/D counts = pppppp
4. Pressure sensor temperature compensation
pressure temperature compensation voltage = vvvv / 13,107
5. External voltage 0 (if **VOLT0=Y**)
external voltage 0 = vvvv / 13,107
6. External voltage 1 (if **VOLT1=Y**)
external voltage 1 = vvvv / 13,107
7. External voltage 2 (if **VOLT2=Y**)
external voltage 2 = vvvv / 13,107
8. External voltage 3 (if **VOLT3=Y**)
external voltage 3 = vvvv / 13,107
9. Time (**Moored mode [MM] only**)
seconds since January 1, 1980 = sssssss

Example: Profiling mode, 2 external voltages sampled,
example scan = tttttccccppppppvvvvvvvvvvvv
= 0A53711BC7220C14C17D8203050594

- Temperature = tttttt = 0A5371 (676721 decimal);
temperature A/D counts = 676721
- Conductivity = cccccc = 1BC722 (1820450 decimal);
conductivity frequency = 1820450 / 256 = 7111.133 Hz
- Pressure = pppppp = 0C14C1 (791745 decimal);
pressure A/D counts = 791745
- Pressure sensor temperature compensation =
vvvv = 7D82 (32,130 decimal);
Pressure temperature = 32,130 / 13,107 = 2.4514 volts
- First external voltage = vvvv = 0305 (773 decimal);
voltage = 773 / 13,107 = 0.0590 volts
- Second external voltage = vvvv = 0594 (1428 decimal);
voltage = 1428 / 13,107 = 0.1089 volts

OUTPUTFORMAT=1 (engineering units in Hex)

Data is output in the order listed, with no spaces or commas between the parameters. Shown with each parameter is the number of digits, and how to calculate the parameter from the data (use the decimal equivalent of the hex data in the equations).

1. Temperature
temperature (°C, ITS-90) = (ttttt / 100,000) - 10
2. Conductivity
Conductivity (S/m) = (ccccc / 1,000,000) - 1
3. Pressure
pressure (decibars) = (pppppp / 1,000) - 100
4. External voltage 0 (if **VOLT0=Y**)
external voltage 0 = vvvv / 13,107
5. External voltage 1 (if **VOLT1=Y**)
external voltage 1 = vvvv / 13,107
6. External voltage 2 (if **VOLT2=Y**)
external voltage 2 = vvvv / 13,107
7. External voltage 3 (if **VOLT3=Y**)
external voltage 3 = vvvv / 13,107
8. Time (**Moored mode [MM] only**)
seconds since January 1, 1980 = sssssss

Example: Profiling mode, 2 external voltages sampled,
example scan = tttttcccccpppppvvvvvvvv
= 3385C40F42FE0186DE03050594

- Temperature = ttttt = 3385C4 (3376580 decimal);
temperature (°C, ITS-90) = (3376580 / 100,000) - 10 = 23.7658
- Conductivity = ccccc = 0F42FE (1000190 decimal);
conductivity (S/m) = (1000190 / 1,000,000) - 1 = 0.00019
- Pressure = pppppp = 0186DE (100062 decimal);
pressure (decibars) = (100062 / 1,000) - 100 = 0.062
- First external voltage = vvvv = 0305 (773 decimal);
voltage = 773 / 13,107 = 0.0590 volts
- Second external voltage = vvvv = 0594 (1428 decimal);
voltage = 1428 / 13,107 = 0.1089 volts

OUTPUTFORMAT=2 (raw frequencies and voltages in decimal)

Data is output in the order listed, with a comma followed by a space between each parameter. Shown with each parameter are the number of digits and the placement of the decimal point. Leading zeros are suppressed, except for one zero to the left of the decimal point.

1. Temperature
A/D counts = ttttt
2. Conductivity
conductivity frequency (Hz) = cccc.ccc
3. Pressure
A/D counts = pppppp
4. Pressure sensor temperature compensation
pressure temperature compensation voltage = v.vvvv
5. External voltage 0 (if **VOLT0=Y**)
external voltage 0 = v.vvvv
6. External voltage 1 (if **VOLT1=Y**)
external voltage 1 = v.vvvv
7. External voltage 2 (if **VOLT2=Y**)
external voltage 2 = v.vvvv
8. External voltage 3 (if **VOLT3=Y**)
external voltage 23 = v.vvvv
9. Time (**Moored mode [MM] only**)
date, time = dd mmm yyyy, hh:mm:ss (day month year hour:minute:second)

Example: Profiling mode with 2 external voltages sampled,
example scan = ttttt, cccc.ccc, pppppp, v.vvvv, v.vvvv, v.vvvv
= 676721, 7111.133, 791745, 2.4514, 0.0590, 0.1089

- Temperature = ttttt = 676721;
temperature A/D counts = 676721
- Conductivity = cccc.ccc = 7111.133;
conductivity frequency = 7111.133 Hz
- Pressure = pppppp = 791745;
Pressure A/D counts = 791745
- Pressure sensor temperature compensation = v.vvvv = 2.4514;
Pressure temperature = 2.4514 volts
- First external voltage = v.vvvv = 0.0590;
voltage = 0.0590 volts
- Second external voltage = v.vvvv = 0.1089;
voltage = 0.1089 volts

OUTPUTFORMAT=3 (engineering units in decimal)

Data is output in the order listed, with a comma followed by a space between each parameter. Shown with each parameter are the number of digits and the placement of the decimal point. Leading zeros are suppressed, except for one zero to the left of the decimal point.

1. Temperature
temperature (°C, ITS-90) = ttt.tttt
2. Conductivity
Conductivity (S/m) = cc.ccccc
3. Pressure
pressure (decibars) = pppp.ppp
4. External voltage 0 (if **VOLT0=Y**)
external voltage 0 = v.vvvv
5. External voltage 1 (if **VOLT1=Y**)
external voltage 1 = v.vvvv
6. External voltage 2 (if **VOLT2=Y**)
external voltage 2 = v.vvvv
7. External voltage 3 (if **VOLT3=Y**)
external voltage 3 = v.vvvv
8. Salinity (if **OUTPUTSAL=Y**)
salinity (psu) = sss.ssss
9. Sound velocity (if **OUTPUTSV=Y**)
sound velocity (meters/second) = vvvv.vvv
10. Time (**Moored mode [MM] only**)
date, time = dd mmm yyyy, hh:mm:ss (day month year hour:minute:second)
11. Density sigma-t (if **OUTPUTUCSD=Y**)
sigma-t (kg/m^3) = ddd.dddd
12. Battery voltage (if **OUTPUTUCSD=Y**)
voltage = vv.v
13. Operating current (if **OUTPUTUCSD=Y**)
current (mA) = ccc.c

Example: Profiling mode with 2 external voltages sampled,
example scan = ttt.tttt, cc.ccccc, pppp.ppp, v.vvvv, v.vvvv
= 23.7658, 0.00019, 0.062, 0.0590, 0.1089

- Temperature = ttt.tttt = 23.7658;
temperature (°C, ITS-90) = 23.7658
- Conductivity = cc.ccccc = 0.00019;
conductivity (S/m) = 0.00019
- Pressure = pppp.ppp = 0.062;
pressure (decibars) = 0.062
- First external voltage = v.vvvv = 0.0590;
voltage = 0.0590 volts
- Second external voltage = v.vvvv = 0.1089;
voltage = 0.1089 volts

OUTPUTFORMAT=4 (pressure and scan number in Hex)

Data is output in the order listed, with no spaces or commas between parameters. Shown with each parameter is the number of digits, and how to calculate the parameter from the data (use the decimal equivalent of the hex data in the equations).

The SBE 19plus is automatically set to **OUTPUTFORMAT=4** when communicating with the **Auto Fire Module (AFM)**. This allows the AFM to use the 19plus pressure data to determine when to close SBE 32 Carousel water bottles.

1. Pressure
pressure (decibars) = pppp - 100
2. Scan number = ssssss

Example: 19plus used with AFM and Carousel,

example scan = ppppssssss
= 00C80001F0

- Pressure = pppp = 00C8 (200 decimal);
pressure (decibars) = 200 - 100 = 100 decibars
- Scan number = ssssss = 0001F0 (496 decimal);
scan number = 496

Optimizing Data Quality for Profiling Applications

A profiling speed of approximately 1 meter/second usually provides good quality data. However, the amount of ship motion, and the dynamic effect it has on data quality, must be considered as operating conditions change. Slow profiling speeds (especially with an unpumped CTD) cause reduced flushing of the conductivity cell, and *salinity spiking* can be severe in areas of strong temperature gradients. In rough seas or other conditions (small boats) where the ship's dynamic motion is large, increase the profiling speed to as much as 2 to 3 meters/second to reduce dynamic errors (spiking) caused by the rapidly changing descent/ascent rate of the SBE 19plus (yo-yo effect).

An SBE 19plus with the standard pump can get better data with slow descent rates than an unpumped CTD. Since the pump creates and maintains a constant and optimum flow, the 19plus can be lowered more slowly to give greater vertical resolution in the data, especially on lakes or protected bays, or in other calm conditions. Adjust the descent rate for a pumped 19plus according to the amount of ship motion (i.e., sea state). On a very calm lake, 10 cm/second is feasible if used with a constant winch speed.

In common with other CTDs, the SBE 19plus is intended for obtaining downcast data, and will not generally give best quality results on the upcast. If you must have good quality upcast data, invert the 19plus so that the sensors are at the top (ignore the downcast data for this configuration). **Position the 19plus so that other instruments, sample bottles, etc. do not thermally contaminate the water that flows past the sensors.**

When an SBE 19plus is installed on a water sampler, good conductivity and optional dissolved oxygen data can be collected, even when stopped to collect a water sample, because water continues to flow through the sensors. However, the manner in which the 19plus is mounted on the water sampler can have a dramatic effect on data quality. Ensure that the 19plus is mounted so that it is sampling undisturbed water (i.e., do not mount behind an obstruction).

Where the water temperature is very different from the temperature at which the SBE 19plus has been stored, better results are obtained if the 19plus is allowed to equilibrate to the water temperature at the surface (soak) for several minutes before beginning the profile. The reason is not that the electronics are temperature sensitive - they are not - but that the thermal influence of the instrument housing on the water entering the cell will be reduced. If the difference between water and storage temperature is extreme, allow more *soak time*.

Spiking is sometimes seen in the derived values for salinity, density, or sound velocity. Spiking results largely from a response time mismatch of the conductivity and temperature sensors, especially when the profiling descent rate is non-uniform. The greatest reduction in spiking is found by using premium CTD equipment such as the SBE 9plus, which uses very fast sensors (0.07 second) and high speed (24 Hz) parallel signal acquisition. The SBE 19plus static accuracy is the same as that of the SBE 9plus, but its dynamic responses are not as ideal, as a result of its simpler, less costly, and more compact design.

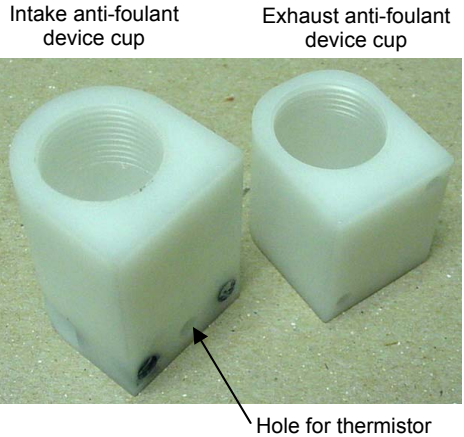
Note:

See the SBE Data Processing manual for information on data processing modules that can correct data for the influences of ship motion and minimize salinity spiking.

The amount of spiking depends on the temperature gradient, and is much worse when coupled surface motion causes the instrument to stop - or even reverse - its descent. In the event of heavy ship motion, it may be worth letting the instrument *free-fall*. When very heavy seas cause severe ship motion and result in periodic reversals of the instrument descent, the data set can be greatly improved by removing scans taken when the pressure is not increasing.

Installing Anti-Foul Fittings for Moored Applications

The SBE 19plus is intended primarily for use as a profiling instrument, and does not come standard with anti-foulant device cups and caps. Some customers, finding that they use the 19plus in moored mode on occasion, choose to install the optional moored mode conversion kit, which includes anti-foulant device cups and caps.



Exhaust anti-foulant device cap (barbed) for pumped applications

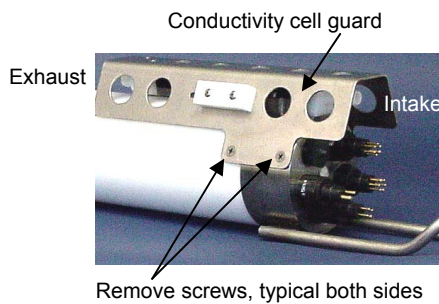


Intake anti-foulant device cap for all applications and exhaust cap for non-pumped applications

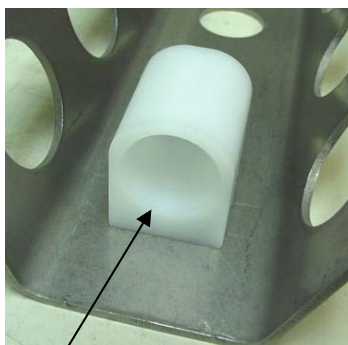


Note: The larger diameter of the intake cap / non-pumped application exhaust cap helps maintain good flow through the conductivity cell and reduces growth of biological material. **Do not use the barbed cap in its place.**

1. On pumped applications, remove the Tygon tubing from the existing conductivity cell exhaust duct.



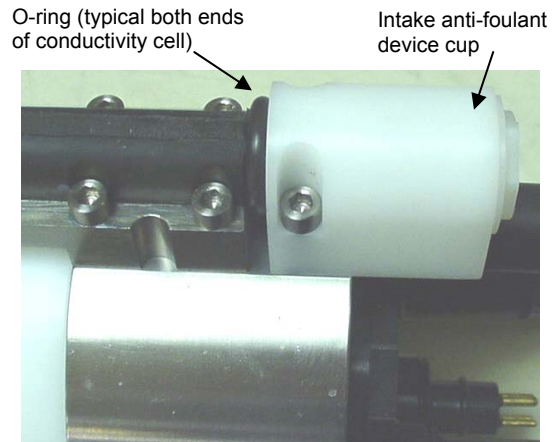
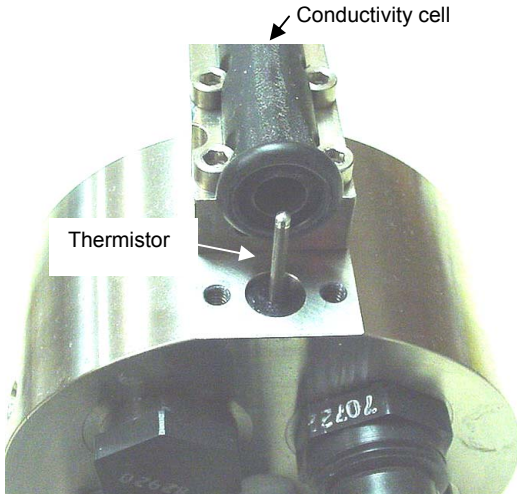
2. Remove the four Phillips-head screws attaching the conductivity cell guard to the housing and end cap. Carefully remove the conductivity cell guard.



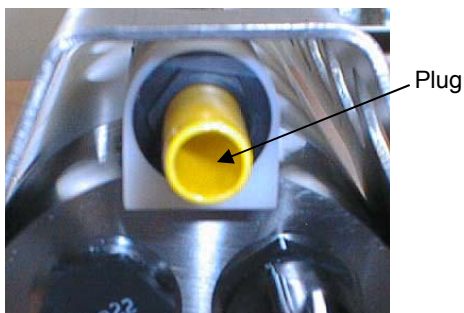
Exhaust anti-foulant device cup

3. Exhaust –
 - A. On the conductivity cell guard, remove the two small screws attaching the exhaust duct to the guard.
 - B. Remove the existing exhaust duct and replace with the exhaust anti-foulant device cup, reinstalling the two screws.
 - C. See *Replacing Anti-Foulant Devices* in *Section 5: Routine Maintenance and Calibration* for details on handling and installing the AF24173 Anti-Foulant Device.
 - D. Install the anti-foulant device cap to secure the Anti-Foulant Device in the cup.

4. Intake –
 - A. Remove the two hex head screws attaching the existing intake duct to the end cap.
 - B. Remove the existing intake duct, pulling it straight up to avoid damaging the thermistor.
 - C. Check to ensure that the o-ring at the end of the conductivity cell is still in place.
 - D. Place the intake anti-foulant device cup over the thermistor and reinstall the hex head screws.
 - E. See *Replacing Anti-Foulant Devices* in *Section 5: Routine Maintenance and Calibration* for details on handling and installing the AF24173 Anti-Foulant Device.
 - F. Install the anti-foulant device cap to secure the Anti-Foulant Device in the cup.



5. Check the exhaust end of the conductivity cell to ensure that the o-ring is still in place.
6. Carefully reinstall the conductivity cell guard on the housing and end cap using the four Phillips-head screws.
7. If not deploying immediately, install a protective plug:
 - In the intake cap, and
 - (for a non-pumped application) In the exhaust cap.
8. (for a pumped application) Reconnect the plumbing to the exhaust. Note that the barbed exhaust cap has a smaller diameter than the standard exhaust cap on the 19plus (which does not accommodate Anti-Foulant Devices). When reconnecting the plumbing, place a 25 mm (0.5 inch) long piece of Tygon tubing, 9.5 mm ID x 12.7 mm OD (0.375 inch x 0.5 inch), on the barbed cap. Then reinstall the existing plumbing, 12.7 mm ID x 19.1 mm OD (0.5 inch x 0.75 inch OD) over the Tygon.



Setup for Deployment

1. Install new batteries or ensure the existing batteries have enough capacity to cover the intended deployment (see *Replacing/Recharging Batteries* in *Section 5: Routine Maintenance and Calibration*).
2. Program the 19plus for the intended deployment using SEATERM (see *Section 3: Power and Communications Test* for connection information; see this section for commands):
 - A. Set the date and then time.
 - B. Ensure all data has been uploaded, and then send **INITLOGGING** to make the entire memory available for recording. If **INITLOGGING** is not sent, data will be stored after the last recorded sample.
 - C. Establish the setup and logging parameters. **If you will be using SEASAVE to acquire and view real-time data, you must set OUTPUTFORMAT=0 (raw hexadecimal).**
 - D. If desired, use **STARTMMDDYY=**, **STARTHHMMSS=**, and **STARTLATER** to establish delayed start date and time for Profiling mode (if **IGNORESWITCH=Y**) or Moored mode.
3. If you will be using SEASAVE to acquire and view real-time data, verify that the configuration (.con) file matches the instrument configuration. Sea-Bird supplies a .con file to match the factory configuration and calibrations. If the instrument is recalibrated or the configuration is changed (such as by adding external sensors), the .con file must be updated to reflect the current condition. See *Verifying Contents of .con File*.
4. If you will be using SEATERM to view real-time data, click Capture on the Toolbar to save the data to a file.

Note:

Always set date and then time. If a new date is entered but not a new time, the new date will not be saved. If a new time is entered without first entering a new date, the date will reset to the last date it was set for with **MMDDYY=** or **DDMMYY=**.

Note:

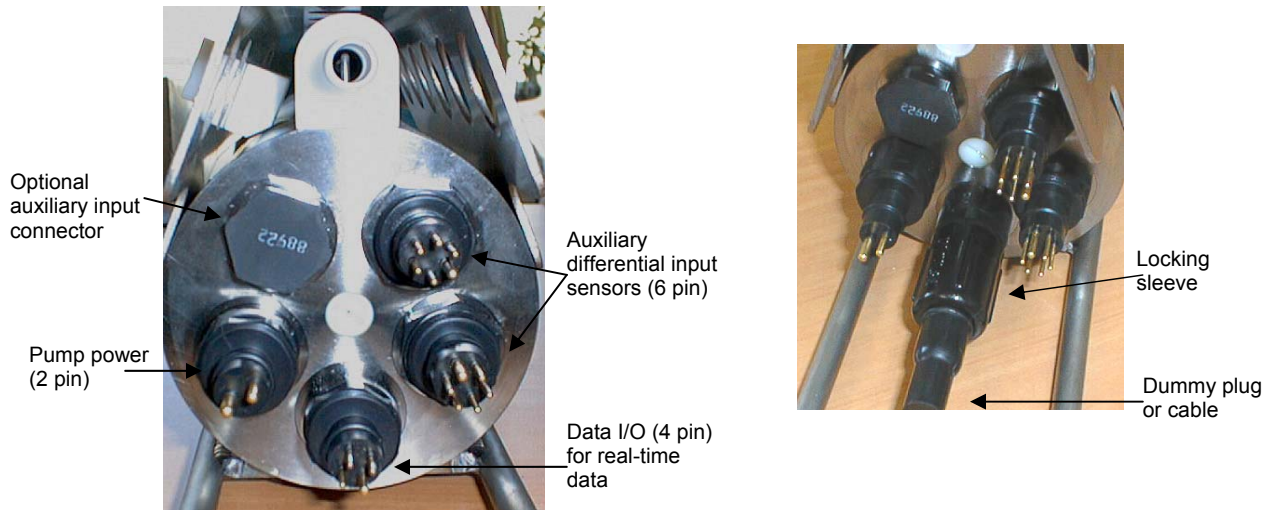
When we ship a new instrument, we include a .con file that reflects the current instrument configuration as we know it. The .con file is named with the instrument serial number, followed with the .con extension. For example, for an instrument with serial number 2375, Sea-Bird names the .con file *2375.con*. You may rename the .con file if desired; this will not affect the results.

Deployment

CAUTION:

Do not use WD-40 or other petroleum-based lubricants, as they will damage the connectors.

1. Install a cable or dummy plug for each connector on the 19plus sensor end cap:
 - A. Lightly lubricate the inside of the dummy plug/cable connector with silicone grease (DC-4 or equivalent).
 - B. **Standard Connector** - Install the plug/cable connector, aligning the raised bump on the side of the plug/cable connector with the large pin (pin 1 - ground) on the 19plus. Remove any trapped air by *burping* or gently squeezing the plug/connector near the top and moving your fingers toward the end cap. **OR**
MCBH Connector – Install the plug/cable connector, aligning the pins.
 - C. Place the locking sleeve over the plug/cable connector. Tighten the locking sleeve finger tight only. **Do not overtighten the locking sleeve and do not use a wrench or pliers.**



2. Connect the other end of the cables installed in Step 1 to the appropriate sensors.
3. Verify that the hardware and external fittings are secure.
4. If applicable, remove the Tygon tubing that was looped end-to-end around the conductivity cell for storage. Reconnect the system plumbing (see *Configuration Options and Plumbing in Section 2: Description of SBE 19plus*).
5. **Profiling mode** - Immediately prior to deployment:
 - (if **IGNORESWITCH=N**) Turn on the magnetic switch, **or**
 - (if **IGNORESWITCH=Y**) If not already done, send **STARTNOW** or **STARTMMDDYY**, **STARTHHMMSS**, and **STARTLATER**, **or**
 - (if **AUTORUN=Y**) With the 19plus in quiescent (sleep) state, apply external power.
6. **Moored mode** - If not already done, send **STARTNOW** or **STARTMMDDYY**, **STARTHHMMSS**, and **STARTLATER**.

The SBE 19plus is ready to go into the water.

Acquiring Real-Time Data with SEASAVE

Notes:

- When we ship a new instrument, we include a .con file that reflects the current instrument configuration as *we know it*. The .con file is named with the instrument serial number, followed with the .con extension. For example, for an instrument with serial number 2375, we name the .con file 2375.con. You may rename the .con file if desired; this will not affect the results.
- In the 19plus setup commands, external voltage numbers 0, 1, 2, and 3 correspond to wiring of sensors to a voltage channel on the end cap (see *Dimensions and End Cap Connectors* in Section 2: *Description of SBE 19plus*). However, in the .con file, voltage 0 is the first external voltage in the data stream, voltage 1 is the second, etc.

Verifying Contents of .con File

SEASAVE, our real-time data acquisition and display program, requires a .con file, which defines the instrument – integrated auxiliary sensors, and channels, serial numbers, and calibration dates and coefficients for all the sensors (conductivity, temperature, and pressure as well as auxiliary sensors). SEASAVE (as well as our data processing software) uses the information in the .con file to interpret and process the raw data. **If the .con file does not match the actual instrument configuration, the software will not be able to interpret and process data correctly.**

- Double click on Seasave.exe.
- In the Configure menu, select *New Style Instrument Configuration / Select Instrument Configuration*. In the dialog box, select the appropriate .con file and click Open.
- In the Configure menu, select *New Style Instrument Configuration / Modify Selected Instrument Configuration*. The configuration dialog box appears. Verify that the sensors match those on your 19plus, and that auxiliary sensors are assigned to the correct voltage channels. Verify that the calibration coefficients for all the sensors are up-to-date.

Channel/Sensor table reflects this choice (0, 1, 2, 3, or 4). Must agree with number programmed into 19plus with **VOLTn=** (n= 0, 1, 2, and 3); see reply from **DS**. Voltage channel 0 in .con file corresponds to first external voltage in data stream, voltage channel 1 to second external voltage in data stream, etc.

Interval between scans in **Moored** mode. SEASAVE uses this to calculate elapsed time, if you select time as a parameter for a display window. For elapsed time calculation to be correct, entry must agree with number programmed into 19plus with **SAMPLEINTERVAL=**; see reply from **DS**.

- Surface PAR - Select if using with deck unit connected to Surface PAR sensor. Selecting Surface PAR voltage adds 2 channels to Channel/Sensor table. (see Application Note 47).
- NMEA - Select if using with deck unit connected to NMEA navigation device. If selected, SEASAVE automatically adds current latitude, longitude, and universal time code to data header. Select NMEA (Lat/Lon) Interface in SEASAVE's Configure menu to control how Lat/Lon data is incorporated.

Configuration for the SBE 19 Seacat plus CTD

ASCII file opened: None

Pressure sensor type: Strain Gauge

External voltage channels: 4

Mode: Profile

Sample interval seconds: 10

Scans to average: 1

Surface PAR voltage added

NMEA position data added

Channel	Sensor
1. Count	Temperature
2. Frequency	Conductivity
3. Count	Pressure, Strain Gauge
4. A/D voltage 0	Free
5. A/D voltage 1	Free
6. A/D voltage	Free
7. A/D voltage	Free

Buttons: New, Open..., Save, Save As..., Select..., Modify..., Report..., Help..., Exit, Cancel

Callouts:

- Select strain gauge.
- Must agree with 19plus setup (MP for Profiling mode, MM for Moored mode); see reply from DS.
- Number of samples to average (samples at 4 Hz) in Profiling mode. Used to calculate elapsed time, if you select time as a parameter for a display window. For elapsed time calculation to be correct, entry must agree with number programmed into 19plus with NAVG=; see reply from DS.
- Shaded sensors cannot be removed or changed to another type of sensor. All others are optional.
- New to create new .con file for this CTD. Open to select different .con file. Save or Save As to save current .con file settings.
- Click a (non-shaded) sensor and click Select to pick a different sensor for that channel. Dialog box with list of sensors appears. Select sensors after number of voltage channels have been specified above.
- Click a sensor and click Modify to change calibration coefficients for that sensor.

- Click *Save* or *Save As* to save any changes to the .con file. Click *Exit* when done reviewing / modifying the .con file.

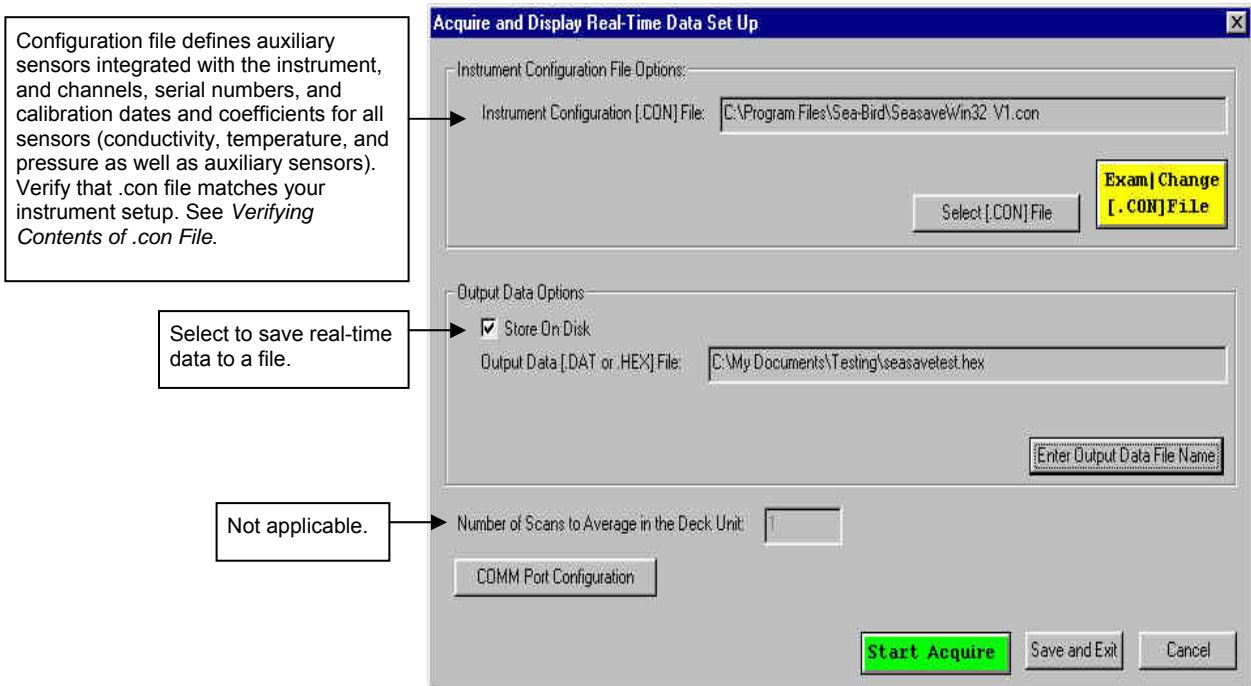
Acquiring Real-Time Data

Instructions below are for an SBE 19plus with a conventional single-core armored cable, used without a Sea-Bird Deck Unit. **If using the 19plus with the SBE 33 or 36 Deck Unit or the SEACAT/SEALOGGER RS-232 and Navigation Interface Box, see the Deck Unit or Interface Box manual.**

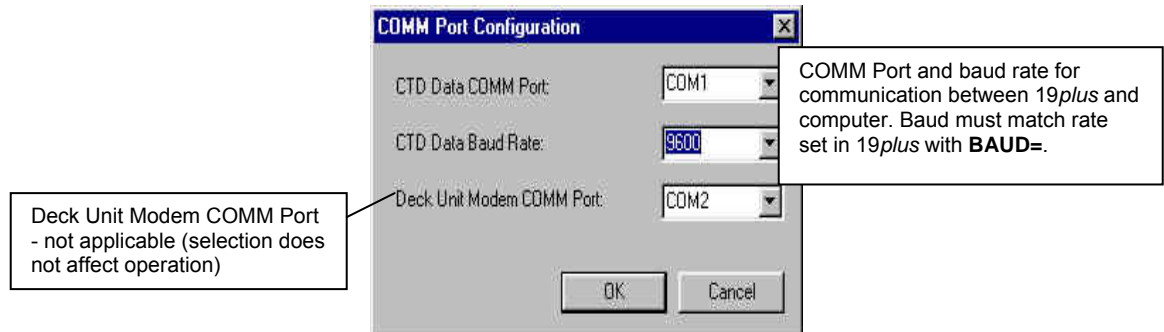
1. Wiring - Terminate the single-core armored cable with an RMG-4FS connector. Wire the cable armor to pin 1 (large pin) and the inner conductor to pin 3 (opposite large pin) on the 19plus data I/O connector. On deck, wire:

Slip-ring lead	25-pin serial port	9-pin serial port
from armor	Pin 7	Pin 5
from inner conductor	Pin 3	Pin 2

2. Double click on Seasave.exe.
3. Perform any desired setup in the Configure and ScreenDisplay menus.
4. In the RealTime Data menu, select *Start Acquisition*.



5. Click *COMM Port Configuration*.



Make the desired selections and click OK.

Note:

If in **moored** mode, the 19plus must be sampling autonomously to use SEASAVE for real-time data acquisition. Start sampling by sending **STARTNOW** or **STARTLATER** in SEATERM before starting acquisition in SEASAVE.

6. In the Acquire and Display Real-Time Data Set Up dialog box, click *Start Acquire*.
 - A. If SEASAVE was set up to prompt for header information (Configure menu / Header Form), the Header Information dialog box appears. Fill in the desired information to be added to the real-time data file header, and click OK.
 - B. SEASAVE prompts *Turn on the SBE 19plus using the magnetic switch*. If you have already started logging data, ignore the prompt; otherwise, slide the switch to the On position. Real-time data then starts appearing in the screen display(s).
7. When done acquiring data, in the RealTime Data menu, select *Stop Acquisition*.
8. Stop logging:
 - (if **IGNORESWITCH=N**) Put the magnetic switch in the Off position, **or**
 - (if **IGNORESWITCH=Y**) Send **STOP** in SEATERM, **or**
 - (if **AUTORUN=Y**) Remove external power.

Recovery

WARNING!

Pressure housings may flood under pressure due to dirty or damaged o-rings, or other failed seals, causing highly compressed air to be trapped inside. If this happens, a potentially life-threatening explosion can occur when the instrument is brought to the surface.

If the 19plus is unresponsive to commands or shows other signs of flooding or damage, carefully secure the instrument in a location away from people until it has been determined that abnormal internal pressure does not exist. Contact Sea-Bird for assistance with procedures for safely relieving internal pressure.

Physical Handling

1. Rinse the instrument and conductivity cell with fresh water. (See *Section 5: Routine Maintenance and Calibration* for cell cleaning and storage.)
2. If the batteries are exhausted, new batteries must be installed before the data can be extracted. Stored data will not be lost as a result of exhaustion or removal of batteries. (See *Section 5: Routine Maintenance and Calibration* for replacement of batteries.)
3. If immediate redeployment is not required, it is best to leave the 19plus with batteries in place and in a quiescent state (**QS**). Because the quiescent current required is only 30 microamps, the batteries can be left in place without significant loss of capacity.

Uploading Data

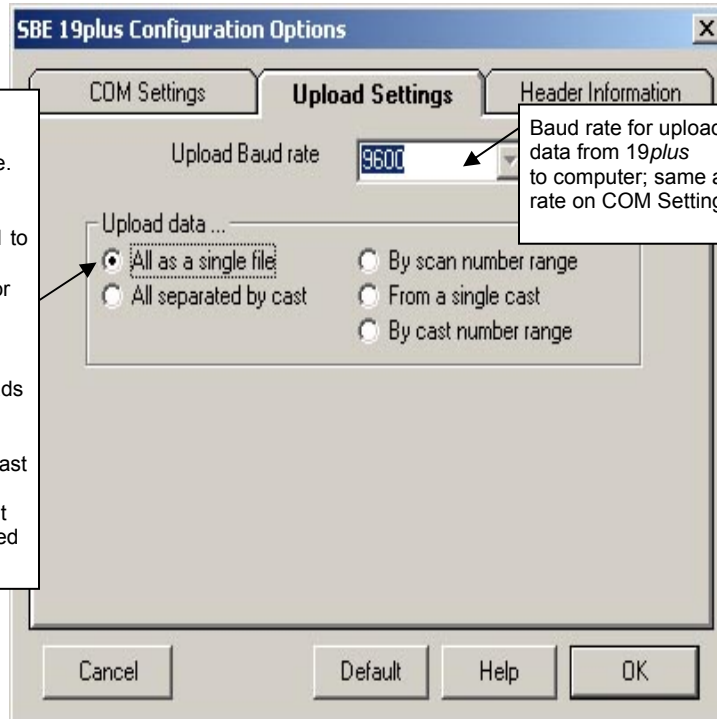
Note:

Data may be uploaded during deployment or after recovery. If uploading after recovery, connect the I/O cable as described in *Section 3: Power and Communications Test*.

1. Double click on SeaTerm.exe. The display shows the main screen.
2. In the Configure menu, select *SBE 19plus*. Click on the Upload Settings tab. The dialog box looks like this:

Defines data upload type when using Upload on Toolbar or Upload Data in Data menu:

- All as single file – All data uploaded into one file.
- All separated by cast (Profiling mode only) - All data uploaded. Separate file is written for each cast, with 3-digit cast identification number (001 to 301) appended to user-selected file name
- By scan number range – SEATERM prompts for beginning and ending scan (sample) numbers, and uploads all data within range into one file.
- From a single cast (Profiling mode only) - SEATERM prompts for cast number, and uploads all data from that cast into one file.
- By cast number range (Profiling mode only) - SEATERM prompts for beginning and ending cast numbers, and uploads data within that range. Separate file is written for each cast, with 3-digit cast identification number (001 to 301) appended to user-selected file name.



Baud rate for uploading data from 19plus to computer; same as baud rate on COM Settings tab.

Note:

Set up **Upload Settings**, **Header Information**, and/or **Header Form** (Steps 2 through 4):

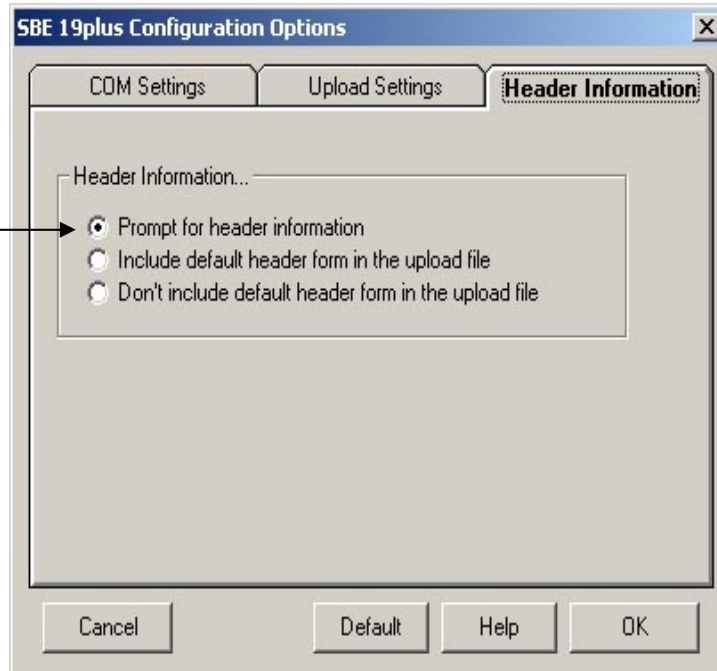
- The first time you upload data, and
- If you want to change upload or header parameters.

Make the selection for Upload Settings.

3. Click on the Header Information tab. The dialog box looks like this:

Defines header information included with uploaded data:

- Prompt for header information – Each time data is uploaded, user is prompted to fill out user-defined header form.
- Include default header form in upload file – User-defined default header form included in upload file. User is not prompted to add any information when data is uploaded.
- Don't include default header form in upload file – Header information not included in upload file.



Select the desired header information option. Click OK to save the settings.

4. In the Configure menu, select Header Form to customize the header. The dialog box looks like this (default prompts are shown):

The entries are free form, 0 to 12 lines long. This dialog box establishes:

- the header prompts that appear for the user to fill in when uploading data, if *Prompt for header information* was selected in the Configuration Options dialog box (Step 3)
- the header included with the uploaded data, if *Include default header form in upload file* was selected in the Configuration Options dialog box (Step 3)

Enter the desired header/header prompts. Click OK.

5. Click Connect on the Toolbar to begin communications with the 19plus. The display looks like this:

```
S>
```

This shows that correct communications between the computer and 19plus has been established.

If the system does not respond as shown above:

- Click Connect again.
 - Check cabling between the computer and the 19plus.
 - Verify the correct instrument was selected and the COM settings were entered correctly in the Configure menu.
6. Command the 19plus to stop data logging by the method applicable to your instrument's setup:
- Pressing the Enter key and sending **STOP**, or
 - Moving the magnetic switch to the Off position (only applicable in Profiling mode, if **IGNORESWITCH=N**)

7. Display 19plus status information by clicking Status on the Toolbar. The display looks like this (if in Profiling mode):

```
SeacatPlus V 1.4D SERIAL NO. 4000 12 Aug 2004 14:02:13
vbatt = 9.6, vlith = 0.0, ioper = 61.2 ma, ipump = 25.5 ma,
iext01 = 76.2 ma,
status = not logging
number of scans to average = 1
samples = 5000, free = 376300, casts = 1
mode = profile, minimum cond freq = 3000, pump delay = 60 sec
autorun = no, ignore magnetic switch = no
battery type = ALKALINE, battery cutoff = 7.5 volts
pressure sensor = strain gauge, range = 1000.0
SBE 38 = no, Gas Tension Device = no
Ext Volt 0 = yes, Ext Volt 1 = no, Ext Volt 2 = no, Ext Volt 3 = no
echo commands = yes
output format = converted decimal
output salinity = no, output sound velocity = no
```

8. Click Upload on the Toolbar to upload stored data in a form that Sea-Bird's data processing software can use. SEATERM responds as follows:
- SEATERM sends **OUTPUTFORMAT=0** to set the output format to raw hexadecimal.
 - SEATERM sends the status (**DS**), header (**DH**), and calibration coefficients (**DCAL**) commands, displays the responses, and writes the commands and responses to the upload file. These commands provide you with information regarding the number of samples in memory, mode, header/cast numbers, calibration coefficients, etc.
 - If you selected *By scan number range, From a single cast, or By cast number range* in the Configuration Options dialog box (Configure menu)** – a dialog box requests the range or cast number, as applicable. Enter the desired value(s), and click OK.
 - If you selected *Prompt for header information* in the Configuration Options dialog box (Configure menu)** – a dialog box with the header form appears. Enter the desired header information, and click OK. SEATERM writes the header information to the upload file.
 - In the Open dialog box, enter the desired upload file name and click OK. The upload file has a .hex extension.
If you selected *All separated by cast* or *By cast number range*, SEATERM will automatically append the 3-digit cast identification number to the upload file name (for example, if you specify the upload file name as *test* and upload casts 1 and 2, SEATERM will create *test001.hex* and *test002.hex*).
 - SEATERM sends the data upload command (**DCx** or **DDb,e** as applicable).
 - If you selected *Prompt for header information* in the Configuration Options dialog box (Configure menu)** – SEATERM repeats Steps D and F for each cast.
 - When the data has been uploaded, SEATERM shows the S> prompt.
9. Ensure all data has been uploaded from the 19plus by reviewing and processing the data:

Notes:

To prepare for redeployment:

- After all data has been uploaded, send **INITLOGGING**. If this command is not sent, new data will be stored after the last recorded sample, preventing use of the entire memory capacity.
- Send **QS** to put the 19plus in quiescent (sleep) state until ready to redeploy. Quiescent current is only 30 microamps, so the batteries can be left in place without significant loss of capacity.

- Use **SEASAVE** to display the raw hexadecimal data in engineering units (see *Verifying Contents of .con File* and SEASAVE's manual/Help files).
- Use **SBE Data Processing** to process and plot the data (see *Processing Data Using SBE Data Processing* and SBE Data Processing manual/Help files).

Processing Data Using SBE Data Processing

Notes:

- See the SBE Data Processing manual and/or Help files.
- When we ship a new instrument, we include a .con file that reflects the current instrument configuration as *we know it*. The .con file is named with the instrument serial number, followed with the .con extension. For example, for an instrument with serial number 2375, Sea-Bird names the .con file *2375.con*. You may rename the .con file if desired; this will not affect the results.
- In the 19plus setup commands, external voltage numbers 0, 1, 2, and 3 correspond to wiring of sensors to a voltage channel on the end cap (see *Dimensions and End Cap Connectors* in *Section 2: Description of SBE 19plus*). However, in the .con file, voltage 0 is the first external voltage in the data stream, voltage 1 is the second, etc.

1. Convert the .hex (raw data) file (real-time file from SEASAVE or uploaded from 19plus memory) to a .cnv (engineering units) file in SBE Data Processing's Data Conversion module.
2. Once the data is converted: perform further processing (align, filter, remove bad data, etc.), calculate derived variables, and plot data using SBE Data Processing's other modules.

Verifying Contents of Configuration (.con) File

To convert the .hex (raw data) file, you need a .con file, which defines the instrument – integrated sensors, and channels, serial numbers, and calibration dates and coefficients for all sensors (conductivity, temperature, and pressure as well as auxiliary sensors). SBE Data Processing uses the .con file information to interpret and process the raw data. **If the .con file does not match the actual instrument configuration, the software will be unable to interpret and process the data correctly.**

To view or modify the .con file:

1. Double click on SBEDataProc.exe.
2. In the Configure menu, select *SBE 19 Seacat plus CTD*. The configuration dialog box appears. In the configuration dialog box, click Open.
3. In the Open dialog box, select the appropriate .con file and click Open. Verify that the sensors match those on your 19plus, and that auxiliary sensors are assigned to the correct voltage channels. Verify that calibration coefficients for all sensors are up-to-date.

Channel/Sensor table reflects this choice (0, 1, 2, 3, or 4). Must agree with number programmed into 19plus with **VOLTn=** (n= 0, 1, 2, and 3); see reply from **DS**. Voltage channel 0 in .con file corresponds to first external voltage in data stream, voltage channel 1 to second external voltage in data stream, etc.

Interval between scans in **Moored** mode. SEASAVE uses this to calculate elapsed time, if you select time as a parameter for a display window. For elapsed time calculation to be correct, entry must agree with number programmed into 19plus with **SAMPLEINTERVAL=**; see reply from **DS**.

- Surface PAR - Select if using with deck unit connected to Surface PAR sensor. Selecting Surface PAR voltage adds 2 channels to Channel/Sensor table. (see Application Note 47).
- NMEA - Select if using with deck unit connected to NMEA navigation device. If selected, SEASAVE automatically adds current latitude, longitude, and universal time code to data header. Select NMEA (Lat/Lon) Interface in SEASAVE's Configure menu to control how Lat/Lon data is incorporated.

The screenshot shows the 'Configuration for the SBE 19 Seacat plus CTD' dialog box. The 'ASCII file opened' is 'None'. The 'Pressure sensor type' is 'Strain Gauge'. 'External voltage channels' is set to 4. 'Mode' is 'Profile'. 'Sample interval seconds' is 10. 'Scans to average' is 1. There are checkboxes for 'Surface PAR voltage added' and 'NMEA position data added', both of which are unchecked. A table lists channels and sensors:

Channel	Sensor
1. Count	Temperature
2. Frequency	Conductivity
3. Count	Pressure, Strain Gauge
4. A/D voltage 0	Free
5. A/D voltage 1	Free
6. A/D voltage 2	Free
7. A/D voltage 3	Free

Buttons on the right include 'New', 'Open...', 'Save', 'Save As...', 'Select...', 'Modify...', 'Report...', 'Help...', 'Exit', and 'Cancel'. Callouts provide instructions for each field and button.

4. Click *Save* or *Save As* to save any changes to the .con file. Click *Exit* when done reviewing / modifying the .con file.

Editing Raw Data File

Sometimes users want to edit the raw .hex data file before beginning processing, to remove data at the beginning of the file corresponding to instrument *soak* time, to remove blocks of bad data, to edit the header, or to add explanatory notes about the cast. **Editing the raw .hex file can corrupt the data, making it impossible to perform further processing using Sea-Bird software.** Sea-Bird strongly recommends that you first convert the data to a .cnv file (using the Data Conversion module in SBE Data Processing), and then use other SBE Data Processing modules to edit the .cnv file as desired.

Note:

Although we provide this technique for editing a raw .hex file, **Sea-Bird's strong recommendation, as described above, is to always convert the raw data file and then edit the converted file.**

The procedure for editing a .hex data file described below has been found to work correctly on computers running Windows 98, 2000, and NT. **If the editing is not performed using this technique, SBE Data Processing may reject the edited data file and give you an error message.**

1. **Make a back-up copy of your .hex data file before you begin.**
2. Run **WordPad**.
3. In the File menu, select Open. The Open dialog box appears. For *Files of type*, select *All Documents (*.*)*. Browse to the desired .hex data file and click Open.
4. Edit the file as desired, **inserting any new header lines after the System Upload Time line**. Note that all header lines must begin with an asterisk (*), and *END* indicates the end of the header. An example is shown below (for an SBE 21), with the added lines in bold:

```
* Sea-Bird SBE 21 Data File:
* FileName = C:\Odis\SAT2-ODIS\oct14-19\oc15_99.hex
* Software Version Seasave Win32 v1.10
* Temperature SN = 2366
* Conductivity SN = 2366
* System UpLoad Time = Oct 15 1999 10:57:19
* Testing adding header lines
* Must start with an asterisk
* Place anywhere between System Upload Time & END of header
* NMEA Latitude = 30 59.70 N
* NMEA Longitude = 081 37.93 W
* NMEA UTC (Time) = Oct 15 1999 10:57:19
* Store Lat/Lon Data = Append to Every Scan and Append to .NAV
File When <Ctrl F7> is Pressed
** Ship:          Sea-Bird
** Cruise:       Sea-Bird Header Test
** Station:
** Latitude:
** Longitude:
*END*
```

5. In the File menu, select Save (**not Save As**). If you are running Windows 2000, the following message displays:

```
You are about to save the document in a Text-Only
format, which will remove all formatting. Are you sure
you want to do this?
```

Ignore the message and click *Yes*.

6. In the File menu, select Exit.

Section 5: Routine Maintenance and Calibration

This section reviews corrosion precautions, connector mating and maintenance, plumbing maintenance, replacement/recharging batteries, conductivity cell storage and cleaning, pressure sensor maintenance, replacement of optional Anti-Foulant Devices, and sensor calibration. The accuracy of the SBE 19*plus* is sustained by the care and calibration of the sensors and by establishing proper handling practices.

Corrosion Precautions

Rinse the SBE 19*plus* with fresh water after use and prior to storage.

For both the plastic and titanium housing, all exposed metal is titanium (the plastic housing has a titanium end cap). No corrosion precautions are required, but avoid direct electrical connection of the titanium to dissimilar metal hardware.

Connector Mating and Maintenance

CAUTION:

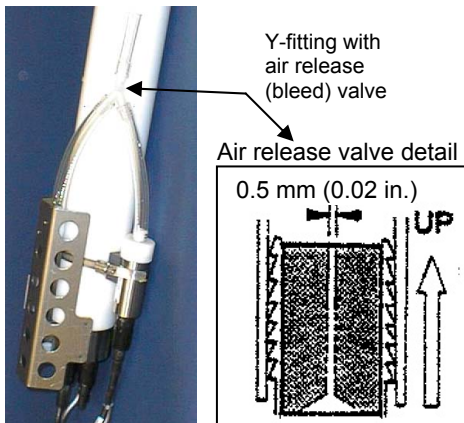
Do not use WD-40 or other petroleum-based lubricants, as they will damage the connectors.

Mated connectors do not require periodic disassembly or other attention. Inspect connectors that are unmated for signs of corrosion product around the pins. When remating:

1. Lightly lubricate the inside of the dummy plug/cable connector with silicone grease (DC-4 or equivalent).
2. **Standard Connector** - Install the plug/cable connector, aligning the raised bump on the side of the plug/cable connector with the large pin (pin 1 - ground) on the 19*plus*. Remove any trapped air by *burping* or gently squeezing the plug/connector near the top and moving your fingers toward the end cap. **OR**
MCBH Connector - Install the plug/cable connector, aligning the pins.
3. Place the locking sleeve over the plug/cable connector. Tighten the locking sleeve finger tight only. **Do not overtighten the locking sleeve and do not use a wrench or pliers.**

Verify that a cable or dummy plug is installed for each connector on the system before deployment.

Plumbing Maintenance



Periodically clean the air release valve with a fine wire. **A clogged air release valve can trap air, preventing the pump from functioning properly;** this will affect the data quality.

Replacing / Recharging Batteries

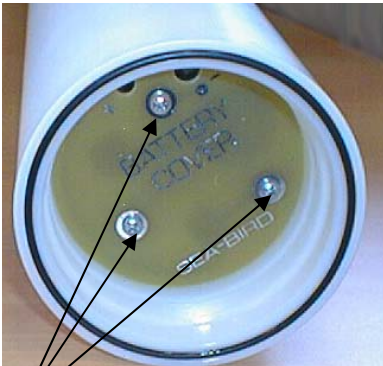
Note:

If changing from alkaline to Ni-Cad batteries, or vice versa, send **BATTERYTYPE=** to indicate the new battery type.

Leave the batteries in place when storing the SBE 19*plus* to prevent depletion of the back-up lithium batteries by the real-time clock. Even *exhausted* main batteries will power the clock (30 microamperes) almost indefinitely. If the 19*plus* is to be stored for long periods, leave the batteries in place and replace them yearly.



Unthread cap by rotating counter-clockwise

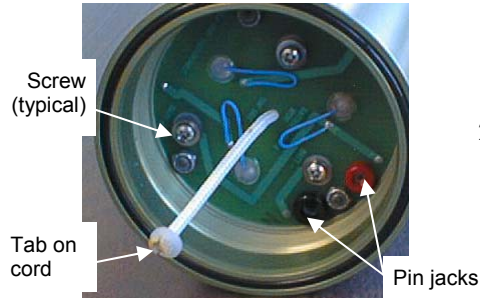
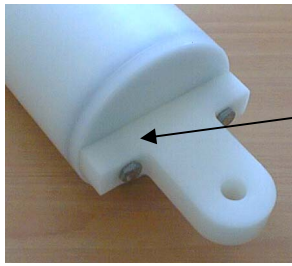


Remove Phillips-head screws and washers

Replacing Alkaline Batteries

1. Remove the battery end cap (end cap without connectors):
 - A. Wipe the outside of the end cap and housing dry, being careful to remove any water at the seam between them.
 - B. Unthread the end cap by rotating counter-clockwise (use a wrench on the white plastic bar if necessary).
 - C. Remove any water from the O-ring mating surfaces inside the housing with a lint-free cloth or tissue.
 - D. Put the end cap aside, being careful to protect the O-ring from damage or contamination.
2. Remove the battery cover plate from the housing:
 - A. Remove the three Phillips-head screws and washers from the battery cover plate inside the housing.
 - B. The battery cover plate will pop out. Put it aside.
3. Turn the 19*plus* over and remove the batteries.
4. Install the new batteries, with the + terminals against the flat battery contacts and the - terminals against the spring contacts.
5. Reinstall the battery cover plate in the housing:
 - A. Align the battery cover plate with the housing. The posts inside the housing are not placed symmetrically, so the cover plate fits into the housing only one way. Looking at the cover plate, note that one screw hole is closer to the edge than the others, corresponding to the post that is closest to the housing.
 - B. Reinstall the three Phillips-head screws and washers, while pushing hard on the battery cover plate to depress the spring contacts at the bottom of the battery compartment. **The screws must be fully tightened, or battery power to the circuitry will be intermittent.**
6. Check the battery voltage at BAT + and BAT - on the battery cover plate. It should be approximately 13.5 volts.
7. Reinstall the battery end cap:
 - A. Remove any water from the O-rings and mating surfaces with a lint-free cloth or tissue. Inspect the O-rings and mating surfaces for dirt, nicks, and cuts. Clean or replace as necessary. Apply a light coat of o-ring lubricant (Parker Super O Lube) to O-rings and mating surfaces.
 - B. Carefully fit the end cap into the housing and rethread the end cap into place. Use a wrench on the white plastic bar to ensure the end cap is tightly secured.

Verify that the magnetic switch on the conductivity cell guard is in the Off position, so the SBE 19*plus* will be in quiescent (sleep) state.



CAUTION:
Do not recharge the battery pack while it is in the housing. If you do so, you may damage the 19*plus* electronics.

Recharging Optional Nickel-Cadmium Batteries

1. Remove the battery end cap (end cap without connectors):
 - A. Wipe the outside of the end cap and housing dry, being careful to remove any water at the seam between them.
 - B. Unthread the end cap by rotating counter-clockwise (use a wrench on the white plastic bar if necessary).
 - C. Remove any water from the O-ring mating surfaces inside the housing with a lint-free cloth or tissue.
 - D. Put the end cap aside, being careful to protect the O-ring from damage or contamination.

2. Remove the battery pack from the housing:
 - A. Remove the three Phillips-head machine screws and washers from the battery cover plate inside the housing.
 - B. Pull on the plastic tab on the center cord to remove the battery pack from the housing.

3. Recharge the batteries:
 - A. Connect the battery charger leads to the battery cover pin jacks, matching black-to-black and red-to-red (the pin jacks are different sizes to prevent cross-wiring).
 - B. Plug the battery charger into a suitable AC mains power source.
 - C. The red **Charge** LED on the charger comes on. Recharging takes approximately 15 hours. When recharging is complete, the yellow **Trickle** LED comes on, indicating the charger is providing a maintenance level charge.
 - D. Disconnect the battery pack from the charger and the charger from the power source.
 - E. Check the voltage at BAT + and BAT – on the battery cover. It should be approximately 10.8 volts.

4. Reinstall the battery pack in the housing:
 - A. Align the battery pack with the housing. The posts inside the housing are not placed symmetrically, so the battery pack fits into the housing only one way. Looking at the battery bottom cover, note that one circular cutout is closer to the edge than the others, corresponding to the post that is closest to the housing.
 - B. Reinstall the three Phillips-head screws and washers, while pushing hard on the top of the battery pack to depress the spring contacts at the bottom of the compartment. **The screws must be fully tightened, or the battery power to the circuitry will be intermittent.**

5. Reinstall the battery end cap:
 - A. Remove any water from the O-rings and mating surfaces with a lint-free cloth or tissue. Inspect the O-rings and mating surfaces for dirt, nicks, and cuts. Clean or replace as necessary. Apply a light coat of O-ring lubricant (Parker Super O Lube) to O-rings and mating surfaces.
 - B. Carefully fit the end cap into the housing and rethread the end cap into place. Use a wrench on the white plastic bar to ensure the end cap is tightly secured.

Verify that the magnetic switch on the conductivity cell guard is in the Off position, so the SBE 19*plus* will be in quiescent (sleep) state.

Conductivity Cell Maintenance

CAUTIONS:

- **Do not put a brush or any object inside the conductivity cell to dry it or clean it.** Touching and bending the electrodes can change the calibration. Large bends and movement of the electrodes can damage the cell.
- **Do not store the 19plus with water in the conductivity cell.** Freezing temperatures (for example, in Arctic environments or during air shipment) can break the cell if it is full of water.



The SBE 19plus' conductivity cell is shipped dry to prevent freezing in shipping. Sea-Bird recommendations follow for three situations:

- Active use - storing for one day or less between uses
- Storage - storing for longer than one day
- Cleaning

The SBE 19plus is shipped with a kit for cell filling and storage. The kit includes:

- Syringe and tubing assembly, and
- Two anti-foulant device caps with hose barbs. These caps are used during cleaning and storage only if you installed anti-foul fittings for a moored application, because the tubing cannot attach to an anti-foulant device cap that is not barbed. The cap used during deployment on one or both ends of the conductivity cell may not be barbed, depending on your system configuration (see *Installing Anti-Foul Fittings for Moored Applications* in *Section 4: Deploying and Operating SBE 19plus*). As needed, remove the installed, non-barbed anti-foulant device cap(s) and replace them with the caps with hose bars **for cleaning and storage only**. Remember to reinstall the original cap(s) before deployment. **Deploying an SBE 19plus with barbed anti-foulant device cap(s) in place of the installed caps is likely to produce undesirable results in your data.**

See *Replacing Anti-Foulant Devices* for safety precautions when handling the AF24173 Anti-Foulant Devices

Active Use (storing for one day or less)

1. After each recovery, rinse the cell with clean, de-ionized water and drain.
 - If the cell is not rinsed between uses, salt crystals may form on the platinized electrode surfaces. When the instrument is used next, sensor accuracy may be temporarily affected until these crystals dissolve.
2. Fill the cell with a **0.1%** solution of Triton X-100 (included with shipment), using a length of Tygon tubing attached to each end of the cell to close the cell ends.
 - The Triton X-100 solution is a mild, non-ionic detergent that keeps contamination from ocean surface film, aerosols, and spray/wash on the ship deck from harming the cell calibration.

Storage (storing for longer than one day)

1. Rinse the cell with clean, de-ionized water and drain. Remove larger droplets of water by blowing through the cell. **Do not use compressed air**, which typically contains oil vapor.
2. Attach a length of Tygon tubing from one end of the cell to the other, to prevent dust and aerosols from entering the cell during storage.
3. When ready to deploy again - Fill the cell with a **0.1%** solution of Triton X-100 for 1 hour before deployment. Then remove the looped Tygon tubing, and reconnect the tubing connecting the pump to the conductivity cell.

Cleaning

The rinse and soak procedure recommended for Active Use is generally sufficient. However, occasionally the cell becomes contaminated and requires more intensive cleaning. We recommend two procedures, depending on the type of contamination:

Triton Cleaning for Ocean Surface Films or Oily Contamination

1. Heat a stronger (**1%-2%**) solution of Triton X-100 to less than 60 °C.
2. Agitate the warm solution through the cell many times in a washing action. This can be accomplished with Tygon tubing and a syringe kit.
3. Fill the cell with the solution and let it soak for 1 hour.
4. Drain and flush with clean, de-ionized water for 1 minute. Then:
 - Prepare for deployment, **or**
 - Follow recommendations above for storage.

Acid Cleaning for Biological or Mineral Contamination

Acid Concentration, Handling, and Disposal

The cleaning procedure uses approximately 50 - 100 cc of acid. Sea-Bird recommends using a 20% concentration of HCl. **However, acid in the range of 10% to full strength (38%) is acceptable.**

If starting with a strong concentration of HCl that you want to dilute:

For each 100 cc of concentrated acid, to get a 20% solution, mix with this amount of water:

Water = $[(\text{conc}\% / 20\%) - 1] * [100 + 10 (\text{conc}\% / 20\%)]$ cc

Always add acid to water; never add water to acid.

Example -- concentrated solution 31.5% that you want to dilute to 20%--

$[(31.5\% / 20\%) - 1] * [100 + 10 (31.5\% / 20\%)] = 66.6$ cc of water

So, adding 100 cc of 31.5% HCl to 66.6 cc of water provides 166.6 cc of the desired concentration.

For 100 cc of solution:

$100 \text{ cc} * (100 / 166.6) = 60$ cc of 31.5% HCl

$66.6 \text{ cc} * (100 / 166.6) = 40$ cc of water

Disposal

Dilute the acid heavily or neutralize with bicarbonate of soda (baking soda).

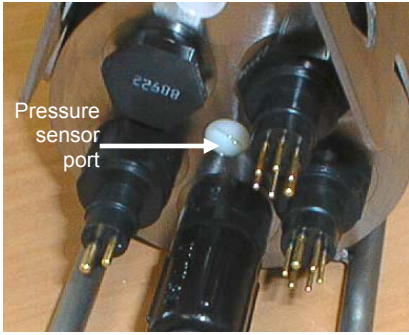
WARNING!

Observe all precautions for working with strong acid. Avoid breathing the acid fumes. Work in a well-ventilated area.

1. Prepare for cleaning:
 - A. Place a 0.6 m (2 ft) length of Tygon tubing over the end of the cell.
 - B. Clamp the 19plus so that the cell is vertical, with the Tygon tubing at the bottom end.
 - C. Loop the Tygon tubing into a U shape, and tape the open end of the tubing in place at the same height as the top of the glass cell.
2. Clean the cell:
 - A. Pour a **10% to 38% solution of HCl** into the open end of the tubing until the cell is nearly filled. **Let it soak for 1 minute only.**
 - B. Drain the acid from the cell and flush the cell for 5 minutes with warm (not hot), clean, de-ionized water.
 - C. Rinse the exterior of the 19plus to remove any spilled acid from the surface.
 - D. Fill the cell with a **1%** solution of Triton X-100 and let it stand for 5 minutes.
 - E. Drain and flush with warm, clean, de-ionized water for 1 minute.
3. Prepare for deployment, **or**
Follow recommendations above for storage.

Repeat this procedure a few times for reluctant contamination. Return to Sea-Bird for cleaning if three acid rinses do not restore the cell's calibration. We recommend that you do not clean with acid more than once per week.

Pressure Sensor Maintenance

**CAUTION:**

Do not put a brush or any object in the pressure port. Doing so may damage or break the pressure sensor.

At the factory, the pressure sensor and pressure port were filled with a silicon oil, and a pressure port plug was used to retain the oil. The oil transmits hydrostatic pressure to the pressure sensor inside the instrument. Because of the viscosity of the silicone oil, the oil does not run out of the pressure sensor port plug. However, due to temperature and pressure cycling over long periods, it is normal for some oil to slowly leak out of the plug. **It is not necessary to refill the oil.**

Periodically (approximately once a year) inspect the pressure port to remove any particles, debris, etc:

1. Unscrew the pressure port plug from the pressure port. The fitting may contain silicon oil from the factory, so there may be some spillage.
2. Rinse the pressure port with warm, de-ionized water to remove any particles, debris, etc.
3. Replace the pressure port plug.

Replacing Anti-Foulant Devices (SBE 16*plus*, SBE 19*plus*)



AF24173
Anti-Foulant
Device

The SBE 16*plus* and 19*plus* (moored option) have an anti-foulant device cup and cap on each end of the conductivity cell. A new SBE 16*plus* (or moored option 19*plus*) is shipped with an Anti-Foulant Device and a protective plug pre-installed in each cup.

Wearing rubber or latex gloves, follow this procedure to replace each Anti-Foulant Device (two):

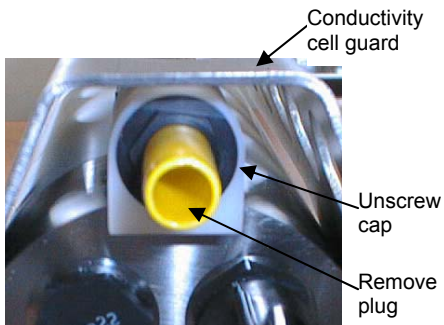
1. Remove the protective plug;
2. Unscrew the cap with a 5/8-inch socket wrench;
3. Remove the old Anti-Foulant Device. If the old Anti-Foulant Device is difficult to remove:
 - Use needle-nose pliers and carefully break up material;
 - If necessary, remove the conductivity cell guard to provide easier access;
4. Place the new Anti-Foulant Device in the cup;
5. Rethread the cap onto the cup. Do not over tighten;
6. Replace the protective plug if not ready to redeploy.

WARNING!

AF24173 Anti-Foulant Devices contain bis(tributyltin) oxide. Handle the devices only with rubber or latex gloves. Wear eye protection. Wash with soap and water after handling.

Read precautionary information on product label (see Appendix V) before proceeding.

It is a violation of US Federal Law to use this product in a manner inconsistent with its labeling.



CAUTION:

One of the anti-foulant device cups is attached to the guard and connected to the conductivity cell. **Removing the guard without disconnecting the cup from the guard will break the cell.** If the guard must be removed:

1. Remove the two screws connecting the anti-foulant device cup to the guard;
2. Remove the four Phillips-head screws connecting the guard to the housing and sensor end cap;
3. Gently lift the guard away.

Sensor Calibration

Note:

After recalibration, Sea-Bird enters the new calibration coefficients in the *19plus* EEPROM, and ships the instrument back to the user with Calibration Certificates showing the new coefficients. The user must enter the coefficients in the instrument configuration (.con) file in the Configure menu in SEASAVE or SBE Data Processing.

Sea-Bird sensors are calibrated by subjecting them to known physical conditions and measuring the sensor responses. Coefficients are then computed, which may be used with appropriate algorithms to obtain engineering units. The conductivity, temperature, and pressure sensors on the SBE *19plus* are supplied fully calibrated, with coefficients stored in EEPROM in the *19plus* and printed on their respective Calibration Certificates.

We recommend that the SBE *19plus* be returned to Sea-Bird for calibration.

Conductivity Sensor

The conductivity sensor incorporates a fixed precision resistor in parallel with the cell. When the cell is dry and in air, the sensor's electrical circuitry outputs a frequency representative of the fixed resistor. This frequency is recorded on the Calibration Certificate and should remain stable (within 1 Hz) over time.

The primary mechanism for calibration drift in conductivity sensors is the fouling of the cell by chemical or biological deposits. Fouling changes the cell geometry, resulting in a shift in cell constant.

Accordingly, the most important determinant of long-term sensor accuracy is the cleanliness of the cell. We recommend that the conductivity sensors be calibrated before and after deployment, but particularly when the cell has been exposed to contamination by oil slicks or biological material.

Temperature Sensor

The primary source of temperature sensor calibration drift is the aging of the thermistor element. Sensor drift will usually be a few thousandths of a degree during the first year, and less in subsequent intervals. Sensor drift is not substantially dependent upon the environmental conditions of use, and — unlike platinum or copper elements — the thermistor is insensitive to shock.

Pressure Sensor

The SBE *19plus* includes a strain-gauge pressure sensor. This sensor is capable of meeting the *19plus* error specification with some allowance for aging and ambient-temperature induced drift.

Pressure sensors show most of their error as a linear offset from zero. A technique is provided below for making small corrections to the pressure sensor calibration using the *offset* (**POFFSET=**) calibration coefficient term by comparing SBE *19plus* pressure output to readings from a barometer.

Allow the SBE *19plus* to equilibrate (with power on) in a reasonably constant temperature environment for at least 5 hours before starting. Pressure sensors exhibit a transient change in their output in response to changes in their environmental temperature. Sea-Bird instruments are constructed to minimize this by thermally decoupling the sensor from the body of the instrument. However, there is still some residual effect; allowing the *19plus* to equilibrate before starting will provide the most accurate calibration correction.

Note:

The pressure sensor is an absolute sensor, so its **raw** output includes the effect of atmospheric pressure (14.7 psi). As shown on the Calibration Sheet, Sea-Bird's calibration (and resulting calibration coefficients) is in terms of psia. However, when outputting pressure in **engineering units**, the *19plus* outputs pressure relative to the ocean surface (i.e., at the surface the output pressure is 0 decibars). The *19plus* uses the following equation to convert psia to decibars:
 pressure (db) =
 [pressure (psia) - 14.7] * 0.689476

1. Place the *19plus* in the orientation it will have when deployed.
2. In SEATERM:
 - A. Set the pressure offset to 0.0 (**POFFSET=0**).
 - B. Send **TP** to measure the *19plus* pressure 100 times and transmit converted data in engineering units (decibars).
3. Compare the *19plus* output to the reading from a good barometer at the same elevation as the *19plus* pressure sensor.
 Calculate *offset* = barometer reading – *19plus* reading
4. Enter the calculated offset (positive or negative) in two places:
 - In the *19plus* EEPROM, using **POFFSET=** in SEATERM, **and**
 - In the configuration (.con) file, using SEASAVE or SBE Data Processing.

Offset Correction Example

Absolute pressure measured by a barometer is 1010.50 mbar. Pressure displayed from *19plus* is -2.5 dbars.

Convert barometer reading to dbars using the relationship: mbar * 0.01 = dbar

Barometer reading = 1010.50 mbar * 0.01 = 10.1050 dbar

The *19plus*' internal calculations and our processing software output gage pressure, using an assumed value of 14.7 psi for atmospheric pressure. Convert *19plus* reading from gage to absolute by adding 14.7 psia to the *19plus* output:

$-2.5 \text{ dbars} + (14.7 \text{ psi} * 0.689476 \text{ dbar/psia}) = -2.5 + 10.13 = 7.635 \text{ dbars}$

Offset = 10.1050 – 7.635 = + 2.47 dbars

Enter offset in *19plus* and in .con file.

For demanding applications, or where the sensor's air ambient pressure response has changed significantly, calibration using a dead-weight generator is recommended. The end cap's $\frac{7}{16}$ -20 straight thread permits mechanical connection to the pressure source. Use a fitting that has an O-ring tapered seal, such as Swagelok-200-1-4ST, which conforms to MS16142 boss.

Section 6: Troubleshooting

This section reviews common problems in operating the SBE 19*plus*, and provides the most common causes and solutions.

Problem 1: Unable to Communicate

The `S>` prompt indicates that communications between the SBE 19*plus* and computer have been established. Before proceeding with troubleshooting, attempt to establish communications again by clicking Connect on SEATERM's toolbar or hitting the Enter key several times.

Cause/Solution 1: The I/O cable connection may be loose. Check the cabling between the 19*plus* and computer for a loose connection.

Cause/Solution 2: The instrument type and/or its communication settings may not have been entered correctly in SEATERM. Select the *SBE 19plus* in the Configure menu and verify the settings in the Configuration Options dialog box. The settings should match those on the instrument Configuration Sheet.

Cause/Solution 3: The I/O cable may not be the correct one. The I/O cable supplied with the 19*plus* permits connection to standard 9-pin RS-232 interfaces. See *Dimensions and End Cap Connectors* in *Section 2: Description of SBE 19plus* for cable pinouts.

Problem 2: No Data Recorded

Cause/Solution 1: The memory may be full; once the memory is full, no further data is recorded. Verify that the memory is not full using **DS** (*free = 0* or *1* if memory is full). Sea-Bird recommends that you upload all previous data before beginning another deployment. Once the data is uploaded, use **INITLOGGING** to reset the memory. After the memory is reset, **DS** will show *samples = 0*.

Problem 3: Nonsense or Unreasonable Data

The symptom of this problem is a data file that contains nonsense values (for example, 9999.999) or unreasonable values (for example, values that are outside the expected range of the data).

Cause/Solution 1: A data file with nonsense values may be caused by incorrect instrument configuration:

- Bad data may be caused by incorrect configuration in the 19plus. Send **DS** to verify the 19plus setup matches the instrument Configuration Sheet (correct pressure sensor, voltage sensors assigned to correct channels, etc).
- Bad data may be caused by incorrect configuration in the instrument .con file. Verify the settings in the instrument .con file match the instrument Configuration Sheet.

Note:

Each 19plus is shipped with a configuration (.con) file that matches the configuration of the instrument (number and type of auxiliary sensors, etc.) and includes the instrument calibration coefficients.

Cause/Solution 2: A data file with unreasonable (i.e., out of the expected range) values for temperature, conductivity, etc. may be caused by incorrect calibration coefficients:

- If you uploaded data in engineering units (**OUTPUTFORMAT=1** or **3**) – Bad data may be caused by incorrect calibration coefficients in the 19plus. Send **DCAL** to verify the calibration coefficients in the 19plus match the instrument Calibration Certificates. Note that calibration coefficients do not affect the raw data stored in 19plus memory. If you have not yet overwritten the memory with new data, you can correct the coefficients and then upload the data again.
- If you are viewing real-time data in SEASAVE or uploaded data in raw hexadecimal (**OUTPUTFORMAT=0**) and are processing the data in SEASAVE or SBE Data Processing - Bad data may be caused by incorrect calibration coefficients in the instrument .con file. Verify the calibration coefficients in the .con file match the instrument Calibration Certificates.

Problem 4: Program Corrupted

Note:

Using the reset switch does not affect the 19plus memory - data in memory and user-programmable parameter values are unaffected.

Cause/Solution 1: In rare cases, the program that controls the 19plus microprocessor can be corrupted by a severe static shock or other problem. This program can be initialized by using the reset switch. Proceed as follows to initialize:

1. Open the battery end cap and remove the batteries (see *Replacing/Recharging Batteries* in *Section 5: Routine Maintenance and Calibration*).
2. There is a small, pushbutton switch on the battery compartment bulkhead, which is visible after the batteries are removed. The switch is used to disconnect the internal lithium batteries from the electronics. Push the switch in for 1 second.
3. Reinstall or replace the batteries, and close the battery end cap.
4. Establish communications with the 19plus (see *Section 3: Power and Communications Test*). Send **DS** to verify that the date and time and sample number are correct.

Glossary

Batteries – Nine alkaline D-cells standard. Available with optional Ni-Cad batteries.

Fouling – Biological growth in the conductivity cell during deployment. Typically a concern when SBE 19*plus* is used in a moored application; install moored mode conversion kit with AF24173 Anti-Foulant Devices for these applications.

PCB – Printed Circuit Board.

SBE Data Processing – Sea-Bird's Win 95/98/NT/2000/XP data processing software, which calculates and plots temperature, conductivity, and pressure, data from auxiliary sensors, and derives variables such as salinity and sound velocity.

Scan – One data sample containing temperature, conductivity, pressure, date and time (moored mode only), and optional auxiliary inputs.

SEACAT – High-accuracy conductivity, temperature, and pressure recorder. The SEACAT is available as the SBE 16*plus* (moored applications, RS-232 or -485 interface), SBE 16*plus*-IM (moored applications, inductive modem interface) and SBE 19*plus* (profiling or moored applications). A *plus* version of the SBE 21 (thermosalinograph) is under development.

SEASAVE – Sea-Bird's Win 95/98/NT/2000/XP software used to acquire, convert, and display real-time or archived raw data.

SEASOFT-DOS – Sea-Bird's complete DOS software package, which includes software for communication, real-time data acquisition, and data analysis and display. SEASOFT-DOS modules for real-time data acquisition and data analysis are not compatible with SBE 19*plus* data output formats.

SEASOFT-Win32 – Sea-Bird's complete Win 95/98/NT/2000/XP software package, which includes software for communication, real-time data acquisition, and data analysis and display. SEASOFT-Win32 includes **SEATERM**, **SeatermAF**, **SEASAVE**, **SBE Data Processing**, and Plot39.

SEATERM – Sea-Bird's Win 95/98/NT/2000/XP terminal program used to communicate with the SBE 19*plus*.

SeatermAF – Sea-Bird's Win 95/98/NT/2000/XP terminal program used to communicate with the SBE 19*plus* when it is used with an Auto Fire Module (AFM). See the AFM manual.

TCXO – Temperature Compensated Crystal Oscillator.

Triton X-100 – Concentrated liquid non-ionic detergent, used for cleaning the conductivity cell.

Appendix I: Functional Description and Circuitry

Sensors

The SBE19*plus* embodies the same sensor elements (3-electrode, 2-terminal, borosilicate glass cell, and pressure-protected thermistor) previously employed in Sea-Bird's modular SBE 3 and SBE 4 sensors and in the original SEACAT design. The SBE19*plus* differs from the SBE 19 in that it uses three independent channels to digitize temperature, conductivity, and pressure concurrently. Multiplexing is not used for these channels.

The pressure sensor is a Druck strain-gauge sensor.

Sensor Interface

Temperature is acquired by applying an AC excitation to a bridge circuit containing an ultra-stable aged thermistor with a drift rate of less than 0.002 °C per year. The other elements in the bridge are VISHAY precision resistors. A 24-bit A/D converter digitizes the output of the bridge. AC excitation and ratiometric comparison avoids errors caused by parasitic thermocouples, offset voltages, leakage currents, and reference errors.

Conductivity is acquired using an ultra-precision Wein-Bridge oscillator to generate a frequency output in response to changes in conductivity.

Strain-gauge pressure is acquired by applying an AC excitation to the pressure bridge. A 24-bit A/D converter digitizes the output of the bridge. AC excitation and ratiometric comparison avoids errors caused by parasitic thermocouples, offset voltages, leakage currents, and reference errors. A silicon diode embedded in the pressure bridge is used to measure the temperature of the pressure bridge. This temperature is used to perform offset and span corrections on the measured pressure signal.

The four external 0 to 5 volt DC voltage channels are processed by differential amplifiers with an input resistance of 50K ohms and are digitized with a 14-bit A/D converter.

Real-Time Clock

To minimize power and improve clock accuracy, a temperature-compensated crystal oscillator (TCXO) is used as the real-time-clock frequency source. The TCXO is accurate to ± 1 minute per year (0 °C to 40 °C).

Battery Wiring

SBE 19*plus* main battery is a series connection of D-cells that drop into the battery compartment as a cluster of end-to-end stacks, three batteries each (standard 9-cell battery pack has three stacks). The positive battery connections are contact areas on double-thick printed circuit disks that form the internal bulkhead and battery retainer plates. Battery negative contacts are heavy beryllium-copper springs. The three cell stacks are aligned by plastic insulated aluminum spacers which also serve as electrical interconnects. The battery-to-circuit card connection is made by means of a Molex-type 3-pin pc board connector (JP3 on the power PCB).

The Power PCB contains three series-connected Panasonic BR-2/3A lithium cells (non-hazardous) which are diode OR'd with the main battery (and external power source, if used). The lithium supply is capable of supporting all SBE 19*plus* functions and serves to permit orderly shutdown in the event of failed or exhausted main batteries. The main batteries can be changed without disturbing memory or the real-time clock.

Appendix II: Electronics Disassembly/Reassembly

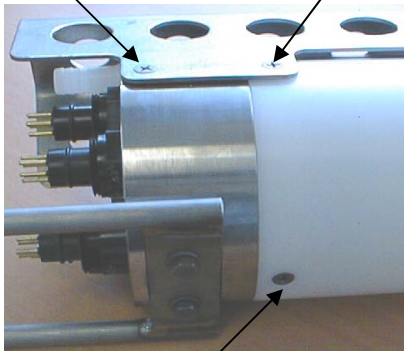
CAUTION:

Use caution during disassembly and reassembly to avoid breaking the conductivity cell.

Disassembly

Do not remove screw
attaching guard to
sensor end cap
(2 places)

Remove screw
(2 places)



Remove screw

1. As a precaution, upload any data in memory before beginning.
2. Remove the two Phillips-head screws holding the conductivity cell guard to the housing. **Do not remove the two screws holding the conductivity cell guard to the sensor end cap.**
3. Remove the Phillips-head screw holding the sensor end cap to the housing on the side opposite the conductivity cell guard.
4. Remove the sensor end cap (with attached conductivity cell and cell guard) and electronics:
 - A. Wipe the outside of the sensor end cap and housing dry, being careful to remove any water at the seam between them.
 - B. Slide the end cap and attached electronics out of the housing.
 - C. The electronics are electrically connected to the battery compartment bulkhead with a Molex connector. Disconnect the Molex connector.
 - D. Remove any water from the O-rings and mating surfaces inside the housing with a lint-free cloth or tissue.
 - E. Be careful to protect the O-rings from damage or contamination.

Reassembly

Note:

Before delivery, a desiccant package is inserted in the electronics chamber, and the chamber is filled with dry Argon gas. These measures help prevent condensation. **If the electronics are exposed to the atmosphere, dry gas backfill with Argon and replace the desiccant package.** See *Application Note 71: Desiccant Use and Regeneration (drying)* for desiccant information. Battery replacement does not affect desiccation of the electronics, as no significant gas exchange is possible unless the electronics PCBs are actually removed from the housing.

1. Reinstall the sensor end cap, conductivity cell and guard, and electronics:
 - A. Remove any water from the O-rings and mating surfaces in the housing with a lint-free cloth or tissue. Inspect the O-rings and mating surfaces for dirt, nicks, and cuts. Clean or replace as necessary. Apply a light coat of O-ring lubricant (Parker Super O Lube) to the O-rings and mating surfaces.
 - B. Plug the Molex connector onto the pins on the battery compartment bulkhead. Verify the connector holes and pins are properly aligned.
 - C. Carefully fit the end cap and electronics into the housing until the O-rings are fully seated.
2. Reinstall the three screws to secure the end cap.
3. Reset the date and time (MMDDYY= and HHMMSS=) and initialize logging (INITLOGGING) before redeploying. No other parameters should have been affected by the electronics disassembly (send DS to verify).

Appendix III: Command Summary

Note:

See *Command Descriptions* in *Section 4: Deploying and Operating SBE 19plus* for detailed information and examples.

CATEGORY	COMMAND	DESCRIPTION
Status	DS	Display status and setup parameters.
General Setup	MMDDYY=mmddy	Set real-time clock month, day, year. Follow with HHMMSS= or it will not set date.
	DDMMYY=ddmmyy	Set real-time clock day, month, year. Follow with HHMMSS= or it will not set date.
	HHMMSS=hhmmss	Set real-time clock hour, minute, second.
	BAUD=x	x= baud rate (1200, 2400, 4800, 9600, 19200, or 38400). Default 9600.
	ECHO=x	x=Y: Echo characters as you type. x=N: Do not.
	BATTERYTYPE=x	x=0: Alkaline (or optional lithium) batteries. x=1: Ni-Cad batteries.
	INITLOGGING	After all previous data has been uploaded, send this before starting to log to make entire memory available for recording. If not sent, data stored after last sample. Equivalent to SAMPLENUMBER=0 .
	SAMPLENUMBER=x	x= sample number for first sample when logging begins. After all previous data has been uploaded, set to 0 before starting to log to make entire memory available for recording. If not reset to 0, data stored after last sample. Equivalent to INITLOGGING .
	HEADERNUMBER=x	x= header and cast number for first cast when logging begins.
	FLASHINIT	Map bad blocks and erase FLASH memory, which destroys all data in 19plus .
QS	Enter quiescent (sleep) state. Main power turned off, but data logging and memory retention unaffected.	
Sensor Setup	PTYPE=x	x=1: Strain-gauge pressure sensor.
	VOLT0=x	x=Y: Enable external voltage 0. x=N: Do not.
	VOLT1=x	x=Y: Enable external voltage 1. x=N: Do not.
	VOLT2=x	x=Y: Enable external voltage 2. x=N: Do not.
	VOLT3=x	x=Y: Enable external voltage 3. x=N: Do not.
Output Format Setup	OUTPUTFORMAT=x	x=0: output raw frequencies and voltages in Hex (required if using SEASAVE). x=1: output converted data in Hex. x=2: output raw frequencies and voltages in decimal. x=3: output converted data in decimal. x=4: output pressure and scan number in Hex.
	OUTPUTSAL=x	x=Y: Calculate and output salinity (psu). Only applies if OUTPUTFORMAT=3 . x=N: Do not.
	OUTPUTSV=x	x=Y: Calculate and output sound velocity (m/sec). Only applies if OUTPUTFORMAT=3 . x=N: Do not.
	OUTPUTUCSD=x	x=Y: Calculate and output density sigma-t (kg/m ³), battery voltage, and operating current (mA). Only applies if OUTPUTFORMAT=3 . x=N: Do not.

CATEGORY	COMMAND	DESCRIPTION
Profiling Mode Setup (commands do not affect moored mode operation)	MP	Set to Profiling mode.
	MINCONDREQ=x	x = minimum conductivity frequency (Hz) to enable pump turn-on.
	PUMPDELAY=x	x = time (seconds) to wait after minimum conductivity frequency is reached before turning pump on. Default 60 seconds.
	IGNORESWITCH=x	x=Y : Ignore magnetic switch position for starting or stopping logging. Use STARTNOW , STARTLATER , and STOP to control logging. x=N : Do not ignore magnetic switch position.
	AUTORUN=x	x=Y : Automatically wake up and start logging when external power is applied; stop logging when external power is removed. Magnetic switch position has no effect on logging. x=N : Do not automatically start logging when external power is applied.
	NAVG=x	x = number of samples to average. 19 <i>plus</i> samples at 4 Hz and averages NAVG samples. Default =1.
Moored Mode Setup (commands do not affect profiling mode operation)	MM	Set to Moored mode.
	MOORED TXREALTIME =x	x=Y : Output real-time data. x=N : Do not.
	DELAYBEFORE SAMPLING =x	x = time (seconds) to wait after switching on external voltage before sampling (0-32,000 seconds). Default 0 seconds.
	MOORED PUMP MODE =x	x=0 : No pump. x=1 : Run pump for 0.5 seconds before each sample. x=2 : Run pump during each sample.
	SAMPLEINTERVAL=x	x = interval (seconds) between samples (10 - 14,400).
	NCYCLES=x	x = number of measurements to take and average every SAMPLEINTERVAL seconds. Default = 1.
Logging	STARTNOW	Start logging now.
	STARTMMDDYY =mmddyy	Delayed logging start: month, day, year. Must follow with STARTHHMMSS=.
	STARTDDMMYY =ddmmyy	Delayed logging start: day, month, year. Must follow with STARTHHMMSS=.
	STARTHHMMSS =hhmmss	Delayed logging start: hour, minute, second.
	STARTLATER	Start logging at delayed logging start date and time.
	STOP	Stop logging or stop waiting to start logging. Press Enter key to get S> prompt before entering STOP . Must stop logging before uploading data. If in Profiling mode and IGNORESWITCH=N , can also turn magnetic switch Off to stop logging.
Data Upload Stop logging before uploading.	DDb,e	Upload data from scan b to scan e .
	DCx	Profiling mode only. Upload data from cast x .
	DHb,e	Upload header b to header e .
Polled Sampling	SL	Output last sample from buffer and leave power on.
	SLT	Output last sample from buffer, then take new sample and store data in buffer. Leave power on.
	TS	Take sample, store data in buffer, output data, and leave power on.
	TSS	Take sample, store in buffer and FLASH memory , output data, and turn power off.
	TSSON	Take sample, store in buffer and FLASH memory , output data, and leave power on.

Note:
Use Upload on the Toolbar or Upload Data in the Data menu to upload data that will be processed by SBE Data Processing. Manually entering the data upload command does not produce data with the required header information for processing by SBE Data Processing.

CATEGORY	COMMAND	DESCRIPTION
Testing Takes and outputs 100 samples for each test. Press Esc key or Stop on Toolbar to stop test.	TT	Measure temperature, output converted data.
	TC	Measure conductivity, output converted data.
	TP	Measure pressure, output converted data.
	TV	Measure four external voltage channels, output converted data.
	TTR	Measure temperature, output raw data
	TCR	Measure conductivity, output raw data.
	TPR	Measure pressure, output raw data.
	TVR	Measure main battery voltage, lithium battery voltage, external current, pressure temperature, and 4 external voltage channels, output raw data.
	PUMPON	Turn pump on for testing purposes.
	PUMPOFF	Turn pump off for testing purposes.
Coefficients (F=floating point number; S=string with no spaces) Dates shown are when calibrations were performed. Calibration coefficients are initially factory-set and should agree with Calibration Certificates shipped with 19plus.	DCAL	Display calibration coefficients; all coefficients and dates listed below are included in display (as applicable). Use individual commands below to modify a particular coefficient or date.
	TCALDATE=S	S=Temperature calibration date.
	TAO=F	F=Temperature A0.
	TA1=F	F=Temperature A1.
	TA2=F	F=Temperature A2.
	TA3=F	F=Temperature A3.
	TOFFSET=F	F=Temperature offset correction.
	CCALDATE=S	S=Conductivity calibration date.
	CG=F	F=Conductivity G.
	CH=F	F=Conductivity H.
	CI=F	F=Conductivity I.
	CJ=F	F=Conductivity J.
	CPCOR=F	F=Conductivity pcor.
	CTCOR=F	F=Conductivity tcor.
	CSLOPE=F	F=Conductivity slope correction.
	PCALDATE=S	S=Pressure calibration date.
	PRANGE=F	F=Pressure sensor full scale range (psi).
	POFFSET=F	F=Pressure offset correction.
	PA0=F	F=Strain-gauge pressure A0.
	PA1=F	F=Strain-gauge pressure A1.
	PA2=F	F=Strain-gauge pressure A2.
	PTEMPA0=F	F=Strain-gauge pressure temperature A0.
	PTEMPA1=F	F=Strain-gauge pressure temperature A1.
	PTEMPA2=F	F=Strain-gauge pressure temperature A2.
	PTCA0=F	F=Strain-gauge pressure temperature compensation ptca0.
	PTCA1=F	F=Strain-gauge pressure temperature compensation ptca1.
PTCA2=F	F=Strain-gauge pressure temperature compensation ptca2.	
PTCB0=F	F=Strain-gauge pressure temperature compensation ptcb0.	
PTCB1=F	F=Strain-gauge pressure temperature compensation ptcb1.	
PTCB2=F	F=Strain-gauge pressure temperature compensation ptcb2.	

Appendix IV: AF24173 Anti-Foulant Device

AF24173 Anti-Foulant Devices supplied for user replacement are supplied in polyethylene bags displaying the following label:

AF24173 ANTIFOULANT DEVICE	
FOR USE ONLY IN SEA-BIRD ELECTRONICS' CONDUCTIVITY SENSORS TO CONTROL THE GROWTH OF AQUATIC ORGANISMS WITHIN ELECTRONIC CONDUCTIVITY SENSORS.	
ACTIVE INGREDIENT:	
Bis(tributyltin) oxide.....	53.0%
OTHER INGREDIENTS:	<u>47.0%</u>
Total.....	100.0%
DANGER	
See the complete label within the Conductivity Instrument Manual for Additional Precautionary Statements and Information on the Handling, Storage, and Disposal of this Product.	
Net Contents: Two antifoulant devices (7.14 g)	
EPA Registration No. 74489-1	Sea-Bird Electronics, Inc
EPA Establishment No. 74489-WA-1	1808 - 136 th Place NE
	Bellevue, WA 98005

AF24173 Anti-Foulant Device

FOR USE ONLY IN SEA-BIRD ELECTRONICS' CONDUCTIVITY SENSORS TO CONTROL THE GROWTH OF AQUATIC ORGANISMS WITHIN ELECTRONIC CONDUCTIVITY SENSORS.

ACTIVE INGREDIENT:

Bis(tributyltin) oxide.....	53.0%
OTHER INGREDIENTS:	47.0%
Total.....	100.0%

DANGER

See Precautionary Statements for additional information.

FIRST AID	
If on skin or clothing	<ul style="list-style-type: none"> • Take off contaminated clothing. • Rinse skin immediately with plenty of water for 15-20 minutes. • Call a poison control center or doctor for treatment advice.
If swallowed	<ul style="list-style-type: none"> • Call poison control center or doctor immediately for treatment advice. • Have person drink several glasses of water. • Do not induce vomiting. • Do not give anything by mouth to an unconscious person.
If in eyes	<ul style="list-style-type: none"> • Hold eye open and rinse slowly and gently with water for 15-20 minutes. • Remove contact lenses, if present, after the first 5 minutes, then continue rinsing eye. • Call a poison control center or doctor for treatment advice.
HOT LINE NUMBER	
Note to Physician	Probable mucosal damage may contraindicate the use of gastric lavage.
Have the product container or label with you when calling a poison control center or doctor, or going for treatment. For further information call National Pesticide Telecommunications Network (NPTN) at 1-800-858-7378.	

Net Contents: Two Anti-Foulant Devices (7.14 g)

Sea-Bird Electronics, Inc.
1808 - 136th Place Northeast
Bellevue, WA 98005

EPA Registration No. 74489-1
EPA Establishment No. 74489-WA-1

PRECAUTIONARY STATEMENTS**HAZARD TO HUMANS AND DOMESTIC ANIMALS****DANGER**

Corrosive - Causes irreversible eye damage and skin burns. Harmful if swallowed. Harmful if absorbed through the skin or inhaled. Prolonged or frequently repeated contact may cause allergic reactions in some individuals. Wash thoroughly with soap and water after handling.

PERSONAL PROTECTIVE EQUIPMENT**USER SAFETY RECOMMENDATIONS**

Users should:

- Remove clothing immediately if pesticide gets inside. Then wash thoroughly and put on clean clothing.
- Wear protective gloves (rubber or latex), goggles or other eye protection, and clothing to minimize contact.
- Follow manufacturer's instructions for cleaning and maintaining PPE. If no such instructions for washables, use detergent and hot water. Keep and wash PPE separately from other laundry.
- Wash hands with soap and water before eating, drinking, chewing gum, using tobacco or using the toilet.

ENVIRONMENTAL HAZARDS

Do not discharge effluent containing this product into lakes, streams, ponds, estuaries, oceans, or other waters unless in accordance with the requirements of a National Pollutant Discharge Elimination System (NPDES) permit and the permitting authority has been notified in writing prior to discharge. Do not discharge effluent containing this product to sewer systems without previously notifying the local sewage treatment plant authority. For guidance contact your State Water Board or Regional Office of EPA. This material is toxic to fish. Do not contaminate water when cleaning equipment or disposing of equipment washwaters.

PHYSICAL OR CHEMICAL HAZARDS

Do not use or store near heat or open flame. Avoid contact with acids and oxidizers.

DIRECTIONS FOR USE

It is a violation of Federal Law to use this product in a manner inconsistent with its labeling. For use only in Sea-Bird Electronics' conductivity sensors. Read installation instructions in the applicable Conductivity Instrument Manual.

STORAGE AND DISPOSAL

PESTICIDE STORAGE: Store in original container in a cool, dry place. Prevent exposure to heat or flame. Do not store near acids or oxidizers. Keep container tightly closed.

PESTICIDE SPILL PROCEDURE: In case of a spill, absorb spills with absorbent material. Put saturated absorbent material to a labeled container for treatment or disposal.

PESTICIDE DISPOSAL: Pesticide that cannot be used according to label instructions must be disposed of according to Federal or approved State procedures under Subtitle C of the Resource Conservation and Recovery Act.

CONTAINER DISPOSAL: Dispose of in a sanitary landfill or by other approved State and Local procedures.

Appendix V: Replacement Parts

Part Number	Part	Application Description	Quantity in 19plus
22018	Batteries, alkaline D-cell, Duracell MN 1300	Power 19plus	9
41124A	Battery cover plate	Retains alkaline batteries	1
80256	Ni-Cad battery pack	Optional rechargeable 9-battery pack	-
90226	Ni-Cad battery charger	For Ni-Cad batteries	-
30411	Triton X-100	Conductivity cell cleaning solution	1
50288	Moored Mode Conversion Kit	Anti-foulant device fittings for moored applications (order AF24173 Anti-Foulant Devices separately)	-
801347	AF24173 Anti-Foulant Device	bis(tributyltin) oxide device inserted into anti-foulant device cup, for moored applications	2
801225*	4-pin RMG-4FS to 9-pin DB-9S I/O cable, 2.4 m (8 ft)	From 19plus to computer	1
171888	25-pin DB-25S to 9-pin DB-9P cable adapter	For use with computer with DB-25 connector	1
17080*	2-pin RMG-2FS to 2-pin RMG-2FS cable, 0.4 m (1.2 ft)	From 19plus to pump	1
17044.1*	2-pin RMG-2FS dummy plug with locking sleeve	For when pump not used	1
17045.1*	3-pin RMG-3FS dummy plug and locking sleeve	For when optional PAR connector not used	-
17046.1*	4-pin RMG-4FS dummy plug with locking sleeve	For when I/O cable not used	1
17047.1*	6-pin AG-206 dummy plug with locking sleeve	For when auxiliary differential input sensors not used	2
801374	4-pin MCIL-4FS (wet-pluggable connector) to 9-pin DB-9S I/O cable, 2.4 m (8 ft)	From 19plus to computer	1
171502	2-pin MCIL-2FS to 2-pin MCIL-2FS (wet-pluggable connector) cable, 0.4 m (1.2 ft)	From 19plus to pump	1
171497.1	2-pin MCDC-2-F wet-pluggable dummy plug with locking sleeve	For when pump not used	1
171500.1	3-pin MCDC-3-F wet-pluggable dummy plug and locking sleeve	For when optional PAR connector not used	-
171398.1	4-pin MCDC-4-F wet-pluggable dummy plug with locking sleeve	For when I/O cable not used	1
171498.1	6-pin MCDC-6-F wet-pluggable dummy plug with locking sleeve	For when auxiliary differential input sensors not used	2
50275	Spare magnetic switch assembly	For starting/stopping logging in Profiling mode	-
90087	Pump air bleed valve assembly	Y fitting, air bleed valve, cable ties, vinyl tubing	1
30388	Tygon tube, ½ inch ID x ¾ inch OD	Main plumbing tubing	-
30579	Tygon tube, 3/8 inch ID x ½ inch OD	13 mm (0.5 inch) long pieces used on conductivity cell exhaust cap used with optional Anti-Foulant Devices and for SBE 43 intake and exhaust to fit to main plumbing	-
22009	Panasonic BR-2/3A lithium batteries	Back-up lithium cells on Power PCB	3

* For standard bulkhead connectors

continued on next page

continued from previous page

Part Number	Part	Application Description	Quantity in 19plus
60021	Spare battery end cap hardware and o-rings	O-rings and hardware, including: <ul style="list-style-type: none"> • 30145 Screw, 6-32 x 1/2 Phillips-head, stainless steel (secures battery cover plate to battery posts) • 30242 Washer, #6 flat, stainless steel (for screw 30145) • 30816 Parker 2-234E603-70 (battery end cap to housing piston seal, sensor end cap to housing seals) • 30090 Parker 2-153N674-70 (battery end cap to housing face seal) 	-
50274	Spare o-ring kit	Assorted o-rings, including: <ul style="list-style-type: none"> • 30816 Parker 2-234E603-70 (battery end cap to housing piston seal, sensor end cap to housing seals) • 30090 Parker 2-153N674-70 (battery end cap to housing face seal) • 30507 Parker 2-206N674-70 (each end of conductivity cell) • 30802 Parker 2-110DUR070, ethylene (titanium conductivity cell tray face seal, groove surface) • 30809 Morrison seal, .047" hole, NIT (temperature probe Morrison seal) • 30072 Parker 2-017N674-70 (bulkhead connector seal) • 30070 Parker 3-904N674-70 (pressure sensor mounting seal) • 30087 Parker 2-232N674-70 (buffer for top retainer for PCB sandwich assembly) • 30801 Parker 5-374E603-70 (base of battery bulkhead seal) 	-
50273	Spare hardware kit	Assorted hardware, including: <ul style="list-style-type: none"> • 30163 Screw, 8-32 x 1 Phillips-head, stainless steel (for magnetic switch) • 30145 Screw, 6-32 x 1/2 Phillips-head, stainless steel (secures battery cover plate to battery posts) • 30242 Washer, #6 flat, stainless steel (for 30145) • 30414 Washer, #12, internal tooth (secures battery bulkhead retainer) • 30954 Screw 4-40 x 3/16 Phillips-head, stainless steel (securing screw for PCB retainer rod) • 31119 Screw 6-32 x 5/8 Truss Head (secures battery bulkhead retainer to bulkhead bottom plate) • 30176 Screw, 10-24 x 3/4, Phillips-head, stainless steel (secures Celcon threaded ring inside titanium battery end cap) • 30249 Washer #10, Flat, stainless steel (used with 30176) • 30447 Bolt, 1/4-20 x 1 1/4 Hex, titanium (secures lift eye to battery end cap) • 31089 Screw, 10-32 x 1/2 flat Phillips-head, titanium (secures sensor end cap to housing - side opposite conductivity cell guard) • 31090 Screw, 10-32 x 5/8 flat Phillips-head, titanium (secures conductivity cell guard to housing) • 31118 Screw, 10-32 x 3/8 Phillips-head, titanium (secures conductivity cell guard to sensor end cap) • 30875 Bolt 1/4-20 x 5/8 Hex, titanium (secures connector guard to sensor end cap) • 30633 Washer, 1/4" split ring lock, titanium (for 30875) • 30919 Screw, 6-32 x 3/8 flat slotted, titanium (secures anti-foulant device cup to conductivity cell guard) • 31066 Screw, 8-32 x 3/4 socket, titanium (secures conductivity cell and TC duct to sensor end cap) • 31225 Bolt, 1/4-20 x 1 1/4 Hex, titanium (mount 19plus to cage) • 31138 Bolt, 1/4-20 x 3/4 Hex, stainless steel (mount cross bars to cage) 	-
50276	Seaspares kit, standard connectors	Includes o-rings, hardware, bulkhead connectors, dummy plugs, etc.: <ul style="list-style-type: none"> • 50087 Conductivity cell filling and storage kit • 50273 Spare hardware kit (see above) • 50274 Spare o-ring kit (see above) • 50275 Spare magnetic switch assembly • 41124A Battery cover plate • 801225 Data I/O cable, 4-pin RMG-4FS to 9-pin DB -9S cable, 2.4 m (8 ft) long • 17044.1 2-pin RMG-2FS dummy plug with locking sleeve • 17046.1 4-pin RMG-4FS dummy plug with locking sleeve • 17047.1 6-pin AG-206 dummy plug with locking sleeve • 17652 2-pin XSG-2-BCL-HP-SS bulkhead connector • 17654 4-pin XSG-4-BCL-HP-SS bulkhead connector • 17628 6-pin AG-306-HP-SS bulkhead connector • 30388 Vinyl tube, 3/4" x 1/2" (main sensor plumbing tubing) • 30409 Teflon tape (for insides of hose clamps) • 30411 Triton X100 (for cell cleaning) • 30457 Parker O-Lube (o-ring lubricant) 	-

continued on next page

continued from previous page

Part Number	Part	Application Description	Quantity in 19plus
50301	Seaspares kit, wet-pluggable connectors	Includes o-rings, hardware, bulkhead connectors, dummy plugs, etc.: <ul style="list-style-type: none"> • 50087 Conductivity cell filling and storage kit • 50273 Spare hardware kit (see above) • 50274 Spare o-ring kit (see above) • 50275 Spare magnetic switch assembly • 41124A Battery cover plate • 801374 Data I/O cable, 4-pin MCIL-4FS (wet-pluggable connector) to 9-pin DB-9S cable, 2.4 m (8 ft) long • 171192 Locking sleeve • 171497 2-pin MCDC-2-F wet-pluggable dummy plug • 171398 4-pin MCDC-4-F wet-pluggable dummy plug • 171498 6-pin MCDC-6-F wet-pluggable dummy plug • 171495 2-pin MCBH-2MTI ½-20 bulkhead connector • 171347 4-pin MCBH-4MTI ½-20 bulkhead connector • 171496 6-pin MCBH-6MTI ½-20 bulkhead connector • 30388 Vinyl tube, ¾" x ½" (main sensor plumbing tubing) • 30409 Teflon tape (for insides of hose clamps) • 30411 Triton X100 (for cell cleaning) • 30457 Parker O-Lube (o-ring lubricant) 	-

Index

.con file · 37, 46, 55, 57, 63, 72

A

About Sea-Bird · 5
 Anti-foul fittings · 53
 Anti-Foulant Devices · 8, 83
 replacing · 71
 Auxiliary sensors · 18

B

Batteries · 11, 13, 55
 alkaline · 66
 Ni-Cad · 67
 recharging · 67
 replacing · 66
 Battery endurance · 13
 Baud rate · 17, 30, 58

C

Cable length · 30
 Calibration · 11, 72
 Circuitry · 77
 Cleaning · 65, 68, 70
 Clock · 11
 Command summary · 80
 Commands
 calibration coefficients · 45
 data upload · 43
 descriptions · 32
 general setup · 35
 logging · 41
 moored mode setup · 40
 output format · 38
 polled sampling · 44
 profiling mode setup · 39
 sensor setup · 37
 status · 33
 testing · 44
 Communication defaults · 23
 Configuration file · 37, 46, 55, 57, 63, 72
 Configuration options · 18
 Connectors · 12, 65
 Corrosion precautions · 65

D

Data bits · 17
 Data I/O · 17
 Data output format · 47
 Data processing · 63
 Data storage · 11, 17
 Deployment
 installation · 56
 moored mode setup · 53
 optimizing data quality · 52
 setup · 55
 Description · 7
 Dimensions · 12

E

Editing data files · 64
 Electronics disassembly/reassembly · 79
 End cap · 12, 65, 66
 External power · *See* Power, external

F

Format
 data output · 47
 Functional description · 77

G

Glossary · 76

L

Limited liability statement · 2
 Logging operation · 41

M

Magnetic reed switch · 17
 Maintenance · 65
 Memory · 11
 Modes · *See* Sampling modes
 Moored mode · 27, 29, 53

P

Parity · 17
Parts
 replacement · 87
Plumbing · 18, 65
Power · 11, 13
 external · 15
Power endurance · 13
Pressure sensor
 maintenance · 70
Processing data · 63
Profiling mode · 26, 28, 52
Pump · 18

Q

Quick start · 5

R

Real-time data acquisition · 57
Real-time setup
 baud rate · 30
 cable length · 30
Recovery
 physical handling · 59
 uploading data · 60
Replacement parts · 87

S

Sampling modes · 25
 moored · 27, 29, 53
 profiling · 26, 28, 52
SBE Data Processing · 10, 20, 62, 63
SEASAVE · 10, 20, 57, 62
SEASOFT · 10, 20
SEATERM · 10, 20, 21, 60
 main screen · 21
 toolbar buttons · 22
Sensors · 11
Software · 10, 20
Specifications · 11
Storage · 68
System description · 7

T

Test
 power and communications · 20
 setup · 20
Timeout description · 32
Troubleshooting · 74

U

Unpacking SBE 19*plus* · 6
Uploading data · 60